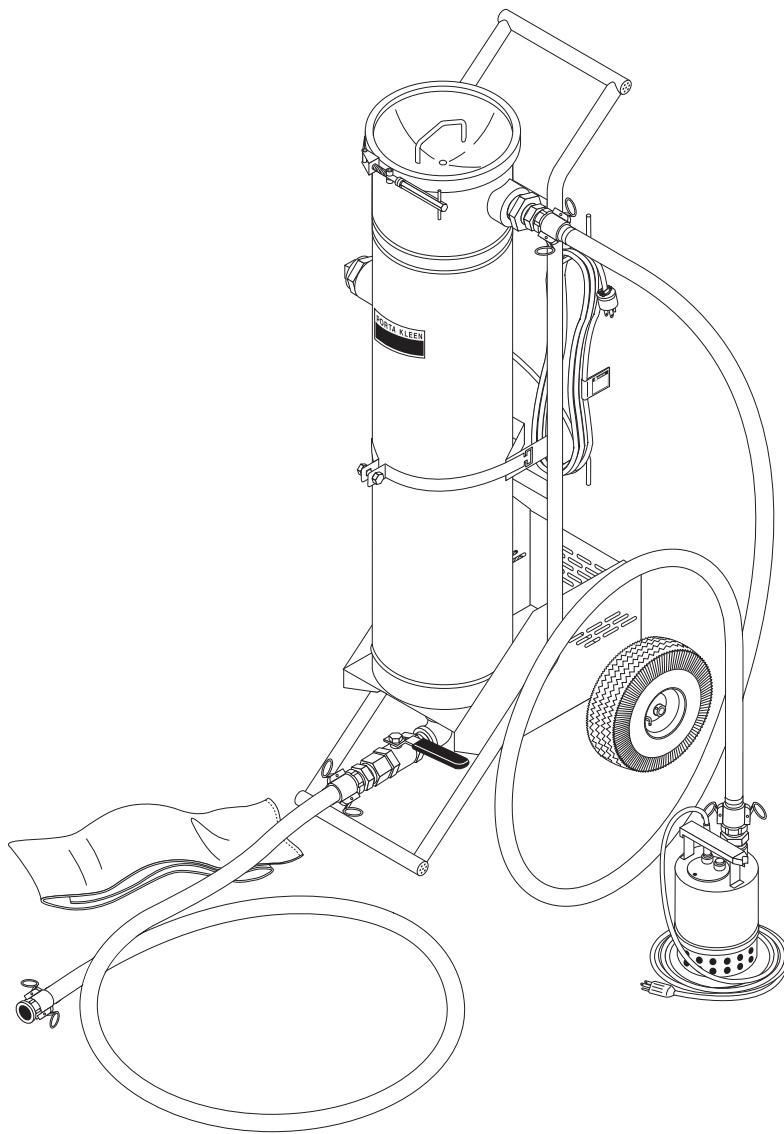


PORTA KLEEN OPERATOR'S MANUAL

■ PK-100D 8.915-585.0



CONTENTS

Introduction 4
Unpacking 4
General Safety Information 4
Understanding Porta Kleen Filtration 4-5
Installation 5
Operating System 5
Troubleshooting 5
Component Identification 6
Exploded View 7
Exploded View Parts List 8
Warranty 9

Model Number _____
Serial Number _____
Date of Purchase _____
The model and serial numbers will be found on a decal attached to the parts washer. You should record both serial number and date of purchase and keep in a safe place for future reference.

INTRODUCTION

Thank you for purchasing a Porta Kleen.

This manual covers the operation and maintenance of the Porta Kleen portable filter system. All information in this manual is based on the latest product information available at the time of printing.

We reserve the right to make changes at any time without incurring any obligation.

Owner/User Responsibility:

The owner and/or user must have an understanding of the manufacturer's operating instructions and warnings before using this machine. Warning information should be emphasized and understood. If the operator is not fluent in English, the manufacturer's instructions and warnings shall be read to and discussed with the operator in the operator's native language by the purchaser/owner, making sure that the operator comprehends its contents.

Owner and/or user must study and maintain for future reference the manufacturers' instructions.

This manual should be considered a permanent part of the machine and should remain with it if unit is resold.

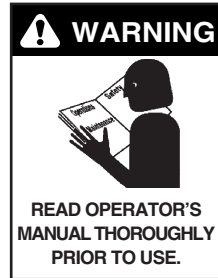
When ordering parts, please specify model and serial number.

UNPACKING

Carefully unpack your new equipment and check contents against packing slip. The Porta Kleen includes:

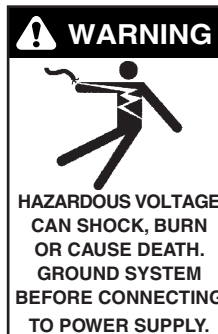
- PK-100D filter assembly (pre-assembled)
- Industrial bag filter housing with one (1) bag
- Stainless steel 1/3 hp sump pump (40 gpm)
- Hand truck with pneumatic tires and cord/hose hooks
- Duplex electrical receptacle with On/Off switch (pump and wet vac plug in)
- 20 feet of electrical cord w/15 amp plug (connection to customer's receptacle)
- Two (2) 10' x 1" high temperature hoses with cam lock connections
- Operating instructions

GENERAL SAFETY INFORMATION



WARNING: To reduce the risk of injury, read operating instructions carefully before using.

1. Read the owner's manual thoroughly. Failure to follow instructions could cause a malfunction of the unit and result in death, serious bodily injury and/or property damage.



WARNING: Meet the National Electrical Code and local codes for all wiring.

2. The installation of the unit must comply with local and/or national codes.

WARNING: All wiring must be performed by a qualified electrician.

WARNING: Ground system before connecting to the power

supply.

3. Do not spray water near electrical components.
4. Never make adjustments on the unit while it is in operation, except those prescribed in this manual.
5. Before servicing the unit, refer to the MSDS on all of the material identified in the waste stream. You must comply with all warnings and wear all protective clothing stated on the MSDS.
6. Be certain coupled hoses have been locked before operating.
7. Inlet water temperature must not exceed 120°F.
8. When making repairs disconnect unit from electrical source.
9. The best insurance against an accident is precaution and knowledge of the equipment.
10. We are not liable for any modifications or the use of components not purchased from the manufacturer.
11. Components will freeze and must be located in a heated enclosure in cold climates.

UNDERSTANDING PORTA KLEEN FILTRATION

This machine was designed to filter and vacuum out sludge and wash water from parts washers, as part of a regularly scheduled preventative maintenance program. The PK-100D consists of an industrial high capacity bag filter mounted on a two wheel pneumatic tire hand

truck and a stainless steel submersible pump capable of handling hot water. The filter, pump, hoses, electrical box and cord are conveniently mounted on the hand truck for easy transport and handling from the service truck to the parts washer. It is recommended that additional tools, such as a good quality wet vac and two plastic 55 gallon barrels, be purchased locally to help with the servicing of the parts washer.

INSTALLATION

Location

The Porta-Kleen must be located next to the parts washer that is being cleaned. The unit must be placed on a firm surface, next to a 120V outlet. Protect unit from freezing.

Component Identification

All components are visible and easy to identify. Take a minute to become familiar with the PK-100D (See fig.1).

Electrical

This unit, when installed, must be electrically grounded in accordance with local and/or national codes. Check for proper voltage using a volt meter. It is recommended that a Ground Fault Circuit Interrupter be installed in the circuit breaker for all equipment used around the washer.

NOTE: Always test all electrical outlets for proper voltage before plugging in any equipment.

OPERATING SYSTEM

Plug the power cord into a 120V, 15 amp grounded receptacle. Connect the bag filter inlet and sump pump together with the cam lock hose, then connect the discharge hose between the bag filter outlet and the 55 gallon drum (not included). Place the sump pump into the parts washer solution tank and plug the electrical cord into the 120V, 15 amp receptacle located behind the filter.

START UP CHECK LIST

	YES	NO
Cam lock hose connected?	_____	_____
Discharge hose connected?	_____	_____
Cam lock secured and locked?	_____	_____
Bag is in bag filter?	_____	_____
Control valve open?	_____	_____
Correct power supply?	_____	_____

NOTE: An extra receptacle has been provided for a wet vac. Check power source for proper sizing when connecting any additional equipment receptacle.

Turn the switch on to pump the water through the filter, then open the control valve to allow filtered water to pour into a 55 gallon drum. Vacuum out the remaining sludge in the parts washer with the wet vac (not included). Place the pump into the 55 gallon drum and pump the water back through the filter into the parts washer.

Remove the bag from the filter and pour the sludge from the wet vac into the bag. The bag is left at the customer's site for dewatering and drying before proper disposal. Recharge the filtered solution with additional chemical to bring it back to the desired strength.

TROUBLESHOOTING

Pump Motor Won't Start — Check for:

Improper or loose connections, open switches, blown circuit breakers or fuses.

Motor Cuts Out — Check for:

Wiring, loose connections, etc.

Low voltage at motor (frequently caused by undersized wiring).

Binding and overload (amperage reading).

Pump Won't Prime

Sump pump inlet holes blocked with sludge.

Low Flow — Generally Check for:

Clogged or restricted suction line.

Plugged or restricted filter.

Air leak in suction (bubbles issuing from return fittings).

Pump operating under speed (low voltage).

Plugged or restricted impeller.

Noisy Pump — Check for:

Air leak in suction causing cavitation in pump.

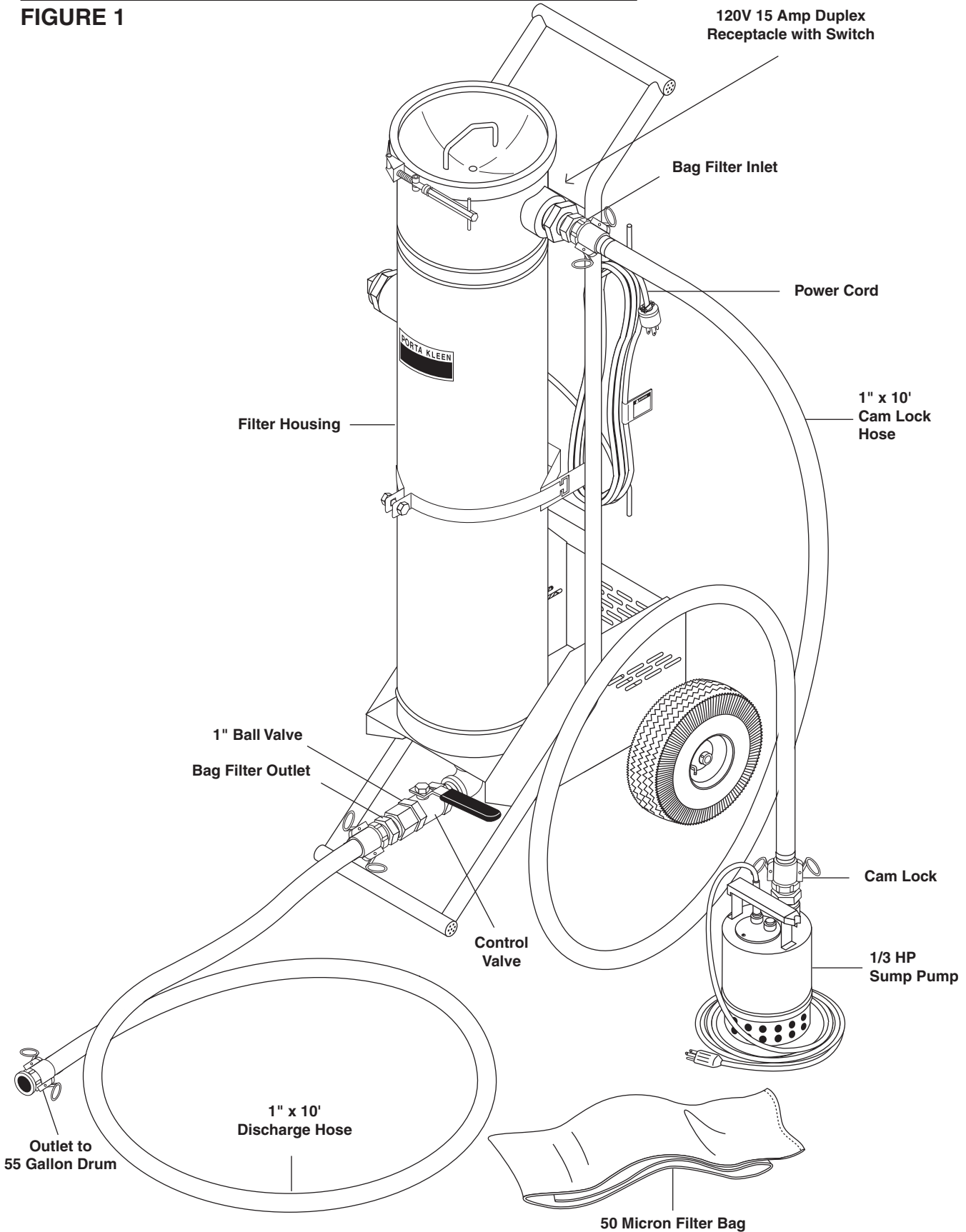
Cavitation due to restricted or undersized suction line and unrestricted discharge lines. Correct suction condition or throttle to discharge lines, if practical.

Foreign matter in pump housing.

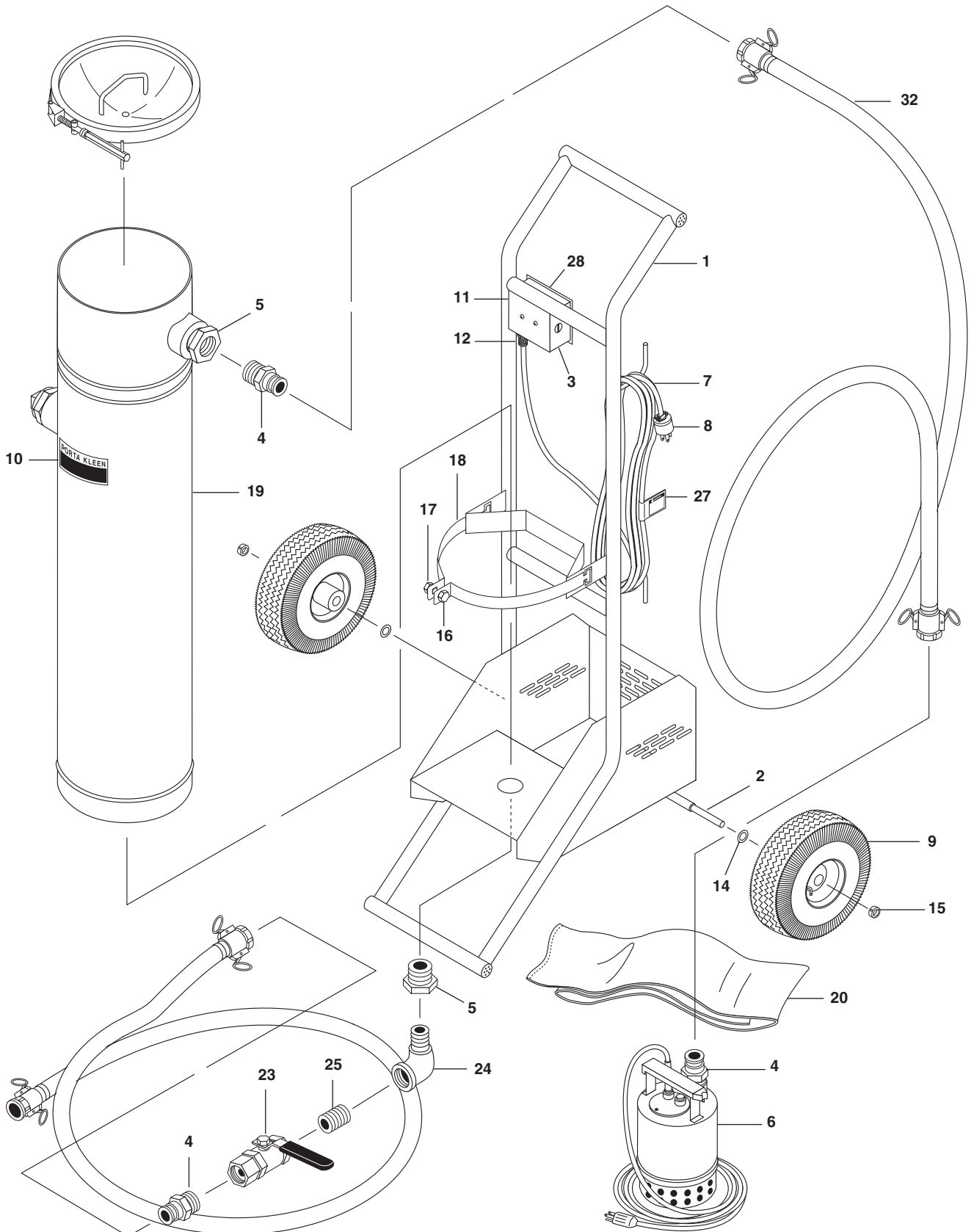
Motor bearings made unserviceable by wear, rust or continual overheating.

COMPONENT IDENTIFICATION & INSTALLATION

FIGURE 1



PK-100D 8.915-5850
EXPLODED VIEW



PK-100D 8.915-585.0
EXPLODED VIEW PARTS LIST

ITEM	PART NO.	DESCRIPTION	QTY	ITEM	PART NO.	DESCRIPTION	QTY
1	8.913-580.0	Hand Cart, Weld Assy, Porta Kleen	1	17	9.802-781.0	Nut, 3/8", Flange Wiz Loc, NC	1
2	8.913-581.0	Axle, Porta Kleen	1	18	8.913-627.0	Strap, Filter, Cabinet Washer	2
3	8.716-316.0	▲ Receptacle, Two Gang w/Switch	1	19	8.709-136.0	Filter, Housing, Cab Washer	1
4	8.707-173.0	Camlock, 1" Male x 1" NPT, 100F-AL	3	20	8.709-145.0	Filter, Bag, 50 Micron, Cabinet Washer	1
5	1.706-037.0	Bushing, 2" x 1" Black Pipe	2	21	9.802-759.0	▲ Screw, 10/32" x 1/2" BHSOC BLK	2
6	8.715-386.0	Pump, Ebara 1/3 HP Sump SS #EPPD3MS1	1	22	9.802-695.0	▲ Nut, 10/32" KEPS	2
7	9.802-423.0	Cord, Service SEO, 16/3 /Ft. Coleman	20	23	8.707-233.0	Valve, 1" Ball Brass	1
8	8.716-307.0	Plug, Male, 120V/15A Hvy Duty	1	24	8.706-183.0	Elbow, 1", Street, Black, 90 DGR	1
9	8.754-186.0	WHEEL ASSY, 10" GRAY STEEL RIM W/TUB	2	25	8.706-005.0	Nipple, 1" x 2", Black	1
10	8.716-319.0	Label, Porta Kleen	1	26	9.802-807.0	▲ Washer, 3/8", SAE, Flat	2
11	8.716-326.0	Box, Junction 4" x 4" 3 Hole, SK Series	1	27	8.932-969.0	Label, Warning, Service Cord	1
12	8.716-572.0	Connector, Strain Relief	1	28	9.800-016.0	Label, Disconnect Pwr Supply	1
13	9.802-524.0	▲ Locknut, 1/2" Conduit	1	29	8.900-459.0	▲ Label, Outlet	1
14	9.802-810.0	Washer, 5/8" Flat, SAE	4	30	8.900-313.0	▲ Label, Assembled in USA	1
15	9.802-782.0	Collar, 5/8" Bore Shaft 3010	2	31	9.800-022.0	▲ Label, 120 Volts	1
16	9.802-723.0	Bolt, 3/8" x 1-1/2", NC HH	1	32	8.711-838.0	Hose, 1" x 10', 7193-100200 W/PT 10-C-Alum	2
						▲ Not Shown	

PK-100D Porta Kleen WARRANTY

LIMITED MINIMUM 90 DAY WARRANTY

We warrant to the original consumer that each new part and accessory sold by Landa will be free from manufacturing defects in materials or workmanship in normal service for the duration specified by the original component manufacturer with a 90 day minimum from date of purchase, provided it is installed properly and the equipment is maintained in accordance with all operator instructions and manuals. Components manufactured by Landa, such as frames and handles have a 1 year warranty from date of purchase.

Our obligation under this warranty is expressly limited as to the replacement or repair, at our option, at Landa, Camas, Washington 98607, or at a service facility designated by us, for such part or parts as inspection shall disclose to have been defective.

EXCLUSIONS:

This warranty does not apply to defects caused by casualty or unreasonable use, including faulty repairs by others and failure to provide reasonable and necessary maintenance.

LIMITATION OF LIABILITY

WE SHALL NOT BE LIABLE FOR SPECIAL, INDIRECT, INCIDENTAL OR CONSEQUENTIAL DAMAGES OF ANY KIND, Including, but not limited to labor costs or transportation charges in connection with the replacement or repair of defective parts.

ANY IMPLIED OR STATUTORY WARRANTIES, INCLUDING WARRANTY OF MERCHANTABILITY OR FITNESS FOR A PARTICULAR PURPOSE, ARE EXPRESSLY LIMITED TO THE DURATION OF THIS WRITTEN WARRANTY. We make no other express warranty, nor is anyone authorized to make any on our behalf.

Some states do not allow limitations on how long an implied warranty lasts or the exclusion or limitation of incidental or consequential damages, so the above limitation or exclusion may not apply to you.

This warranty gives you specific legal rights and you may also have other rights which vary by state to state.

TO OBTAIN WARRANTY SERVICE:

Purchaser must bring the accessory parts to an authorized Landa Dealership. For the dealership nearest you write: Kärcher North America, 4275 NW Pacific Rim Blvd, Camas, WA 98607 or call 360 833-1600.

