

LANDA®

PE

OPERATOR'S MANUAL

- PE2A-1500
 - PE3-1100
 - PE4-2000
 - PE4-3000
 - PE5-3000
-



SHOP PRESSURE WASHER PARTS

shoppressurewasherparts.com | (888) 269-0172

8.913-998.0 - G 01/04/23

CONTENTS

Introduction	3
Important Safety Information	3-4
Component Identification	5
Assembly Instructions.....	6
Operating Instructions.....	7
Detergents and General Operating Techniques.....	8
Shut Down and Clean-Up	9
Storage	9
Troubleshooting	10-11
Preventative Maintenance	12
Oil Change Record	12
Exploded View	13-14
Exploded View Parts List	15-17
Specifications.....	18-19
Hose & Spray Gun.....	20
LB Pump Exploded View and Parts List	21-22
LT Pump Exploded View and Parts List.....	23-24
VRT3 Unloader Exploded View and Parts List.....	25
VBT Banjo Unloader Exploded View and Parts List	26

Model Number _____

Serial Number _____

Date of Purchase _____

The model and serial numbers will be found on a decal attached to the pressure washer. You should record both serial number and date of purchase and keep in a safe place for future reference.

INTRODUCTION & IMPORTANT SAFETY INFORMATION

Thank you for purchasing this Pressure Washer.
We reserve the right to make changes at any time without incurring any obligation.

Owner/User Responsibility:

The owner and/or user must have an understanding of the manufacturer's operating instructions and warnings before using this pressure washer. Warning information should be emphasized and understood. If the operator is not fluent in English, the manufacturer's instructions and warnings shall be read to and discussed with the operator in the operator's native language by the purchaser/owner, making sure that the operator comprehends its contents.

Owner and/or user must study and maintain for future reference the manufacturers' instructions.

The operator must know how to stop the machine quickly and understand the operation of all controls. Never permit anyone to operate the engine without proper instructions.

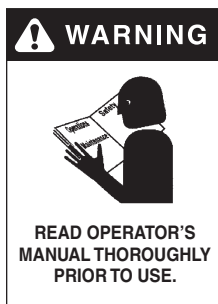
SAVE THESE INSTRUCTIONS

This manual should be considered a permanent part of the machine and should remain with it if machine is resold.

When ordering parts, please specify model and serial number. Use only identical replacement parts.

This machine is to be used only by trained operators.

IMPORTANT SAFETY INFORMATION



WARNING: To reduce the risk of injury, read operating instructions carefully before using.

1. Read the owner's manual thoroughly. Failure to follow instructions could cause malfunction of the machine and result in death, serious bodily injury and/or property damage.
2. Know how to stop the machine and bleed pressure quickly. Be thoroughly familiar with the controls.
3. Stay alert — watch what you are doing.
4. All installations must comply with local codes. Contact your electrician, plumber, utility company or the selling distributor for specific details. If your machine is rated 250 volts or less, single phase will be provided with a ground fault circuit interrupter (GFCI). If rated more than 250 volts, or more than single phase this product should only be connected to a power supply receptacle protected by a GFCI.

DANGER: Improper connection of the equipment-grounding conductor can result in a risk of electrocution. Check with a qualified electrician or service personnel if you are in doubt as to whether the outlet is properly grounded. Do not modify the plug provided with the product - if it will not fit the outlet, have a proper outlet installed by a qualified electrician. Do not use any type of adaptor with this product



WARNING: Keep wand, hose, and water spray away from electric wiring or fatal electric shock may result.

5. To protect the operator from electrical shock, the machine must be electrically grounded. It is the responsibility of the owner to connect this machine

to a UL grounded receptacle of proper voltage and amperage ratings. Do not spray water on or near electrical components. Do not touch machine with wet hands or while standing in water. Always disconnect power before servicing.



WARNING: Flammable liquids can create fumes which can ignite, causing property damage or severe injury.

WARNING: Risk of explosion — Do not spray flammable liquids.

6. Do not allow acids, caustic or abrasive fluids to pass through the pump.

7. Never run pump dry or leave spray gun closed longer than 1-2 minutes.
8. Keep operating area clear of all persons.



WARNING: High pressure spray can cause paint chips or other particles to become airborne and fly at high speeds. To avoid personal injury, eye, hand and foot safety devices must be worn.

9. Eye, hand, and foot protection must be worn when using this equipment.

IMPORTANT SAFETY INFORMATION

WARNING



TRIGGER GUN KICKS BACK - HOLD WITH BOTH HANDS

WARNING: Grip cleaning wand securely with both hands before starting. Failure to do this could result in injury from a whipping wand.

WARNING



RISK OF INJECTION OR SEVERE INJURY TO PERSONS. KEEP CLEAR OF NOZZLE.

WARNING: High pressure developed by these machines will cause personal injury or equipment damage. Keep clear of nozzle. Use caution when operating. Do not direct discharge stream at people, or severe injury or death will result.

10. To reduce the risk of injury, close supervision is necessary when a machine is used near children. Do not allow children to operate the pressure washer. **This machine must be attended during operation.**
11. Never make adjustments on machine while in operation.
12. Be certain all quick coupler fittings are secured before using pressure washer.

WARNING



PROTECT FROM FREEZING

WARNING: Protect machine from freezing.

13. To keep machine in best operating conditions, it is important you protect machine from freezing. Failure to protect machine from freezing could cause malfunction of the machine and result in death,

serious bodily injury, and/or property damage. Follow storage instructions specified in this manual.

14. Inlet water must be clean fresh water and no hotter than 90°F.
15. Manufacturer will not be liable for any changes made to our standard machines or any components not purchased from us.
16. The best insurance against an accident is precaution and knowledge of the machine.

WARNING



RISK OF INJURY FROM FALLS WHEN USING LADDER.

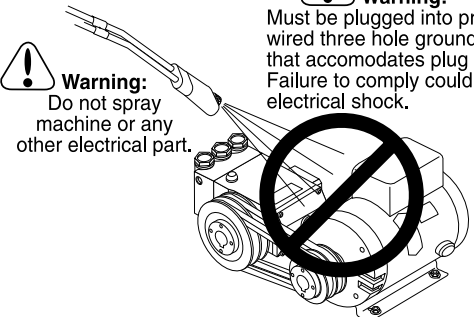
WARNING: Be extremely careful when using a ladder, scaffolding or any other relatively unstable location. The cleaning area should have adequate slopes and drainage to reduce the possibility of a fall due to slippery surfaces.

17. Do not overreach or stand on unstable support. Keep good footing and balance at all times.
18. Do not operate this machine when fatigued or under the influence of alcohol, prescription medications, or drugs.



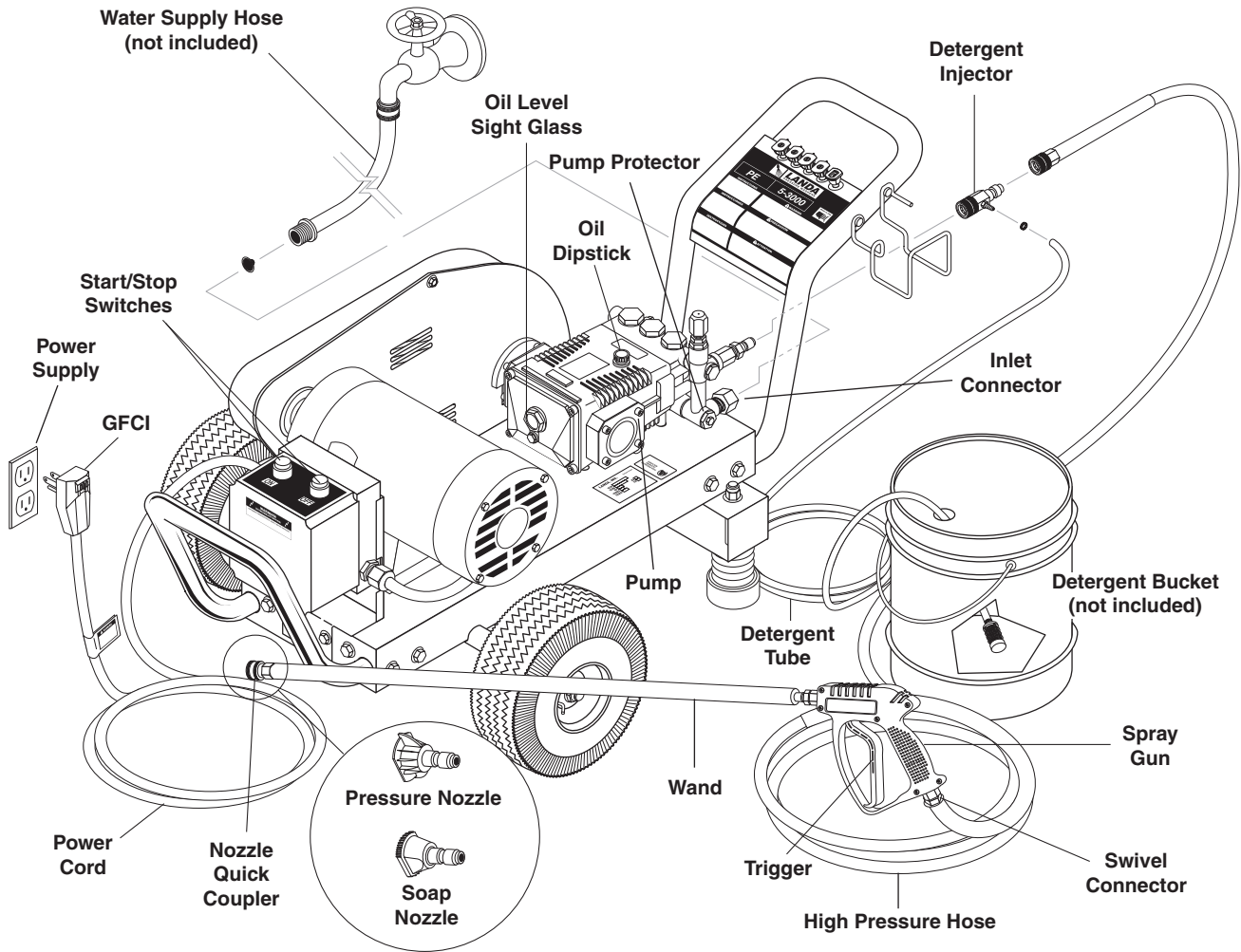
19. Follow the maintenance instructions specified in the manual.

Warning: Must be plugged into properly wired three hole grounded outlet that accommodates plug on power cord. Failure to comply could result in electrical shock.



Warning: Do not spray machine or any other electrical part.

COMPONENT IDENTIFICATION



Detergent Injector - Allows you to siphon and mix detergents.

High Pressure Hose - Connect one end to water pump discharge nipple and the other end to spray gun.

Nozzle Quick Coupler - To easily connect the high pressure hose and soap nozzle to wand.

Oil Level Sight Glass - A quick visual reference to the oil level in the pump.

Pump - Develops high pressure.

Pump Protector - Cycles fresh cool water through pump when recirculating water reaches 140°F.

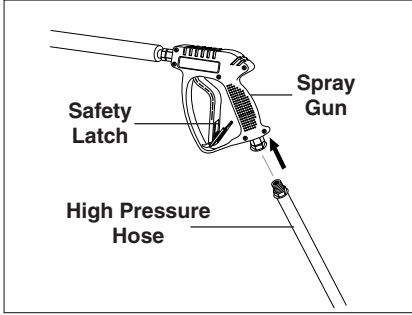
Spray Gun - Must be connected to the high pressure hose and wand.

Swivel Connector - Connects to the spray gun and wand. Minimizes hassle of hose coiling.

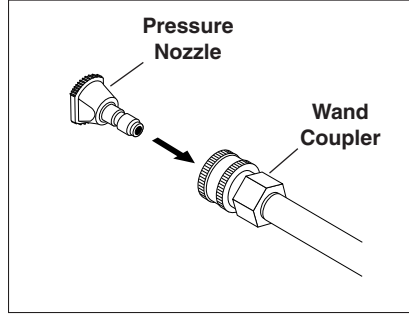
Wand - Must be connected to the spray gun.

Note: If trigger on spray gun is released for more than 1-2 minutes, water will leak from valve. Warm water will discharge from pump protector onto floor. This system prevents internal pump damage.

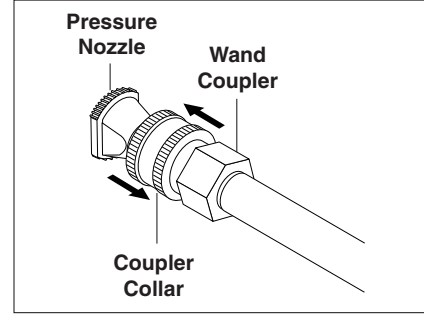
ASSEMBLY INSTRUCTIONS



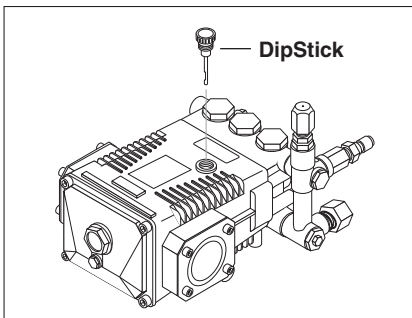
STEP 1: Attach the high pressure hose to the spray gun using teflon tape on hose threads.



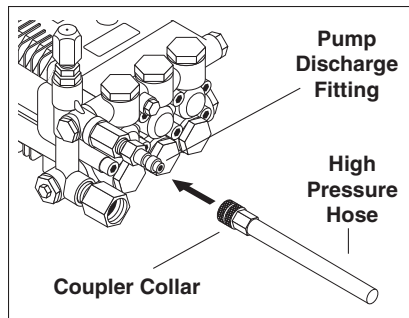
STEP 2: Pull the spring-loaded collar of the wand coupler back to insert your choice of pressure nozzle.



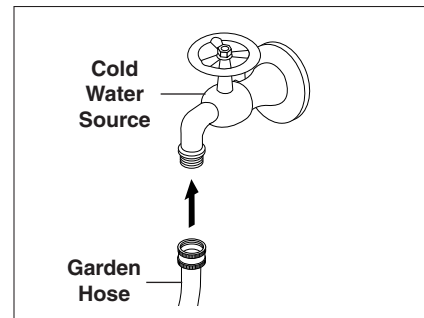
STEP 3: Release the coupler collar and push the nozzle until the collar clicks. Pull the nozzle to make sure it is seated properly.



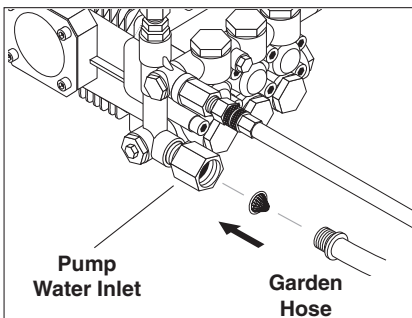
STEP 4: Remove shipping cap and install oil dipstick. Check pump oil level by using dipstick or observe oil level in oil window (if equipped). Use 30 wt. (non detergent) oil.



STEP 5: Connect the high pressure hose to the pump discharge fitting. Push coupler collar forward until secure.

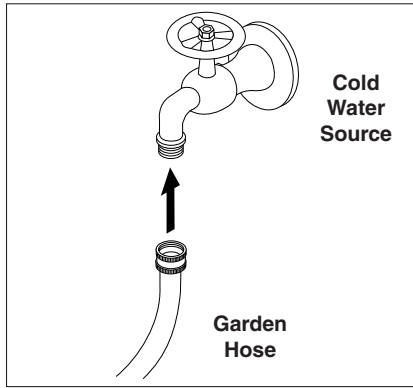


STEP 6: Connect garden hose to the cold water source.

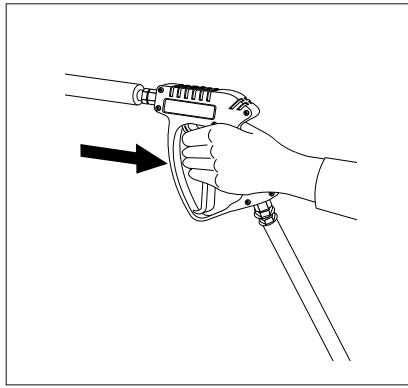


STEP 7: Check inlet filters, remove debris, then connect the garden hose to pump water inlet.
CAUTION: Do not run the pump without water or pump damage will result.

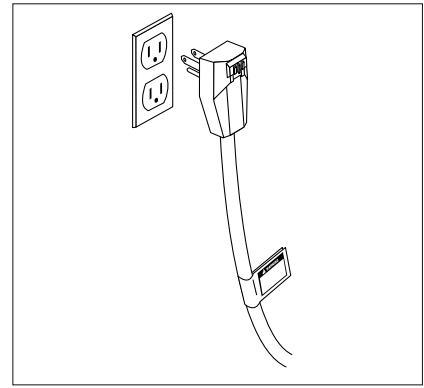
OPERATING INSTRUCTIONS



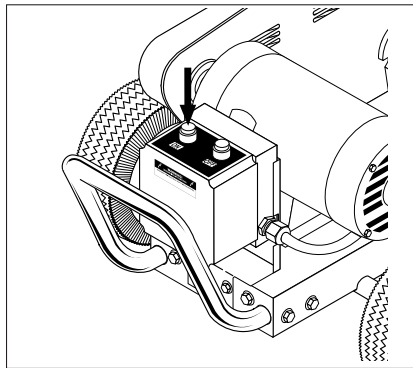
STEP 1: Connect garden hose to the cold water source and turn water on completely. Never use hot water.



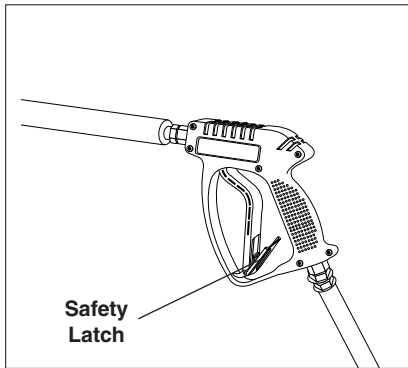
STEP 2: Trigger the spray gun to eliminate trapped air then wait for a steady flow of water to emerge from the spray nozzle.



STEP 3: Connect machine to adequate power source. Push reset button on GFCI.

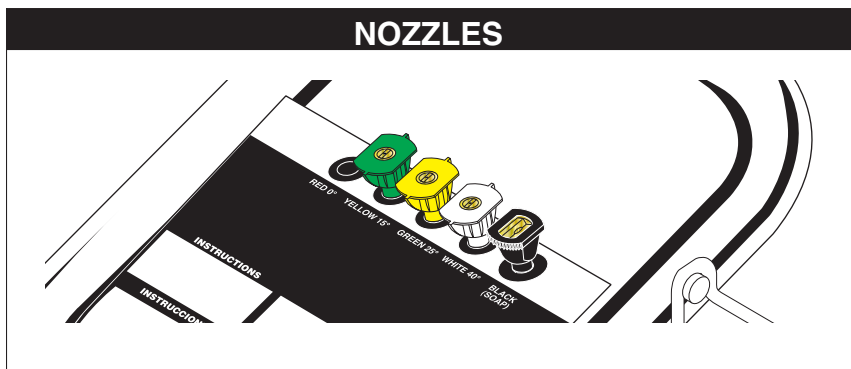


STEP 4: Turn machine on.



! WARNING! Never replace nozzles without engaging the safety latch on the spray gun trigger.

NOZZLES



The four color-coded quick connect nozzles provide a wide array of spray widths from 15° to 40° and are easily accessible when placed in the convenient rubber nozzle holder, which is provided on the front of the machine.

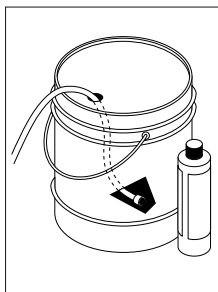
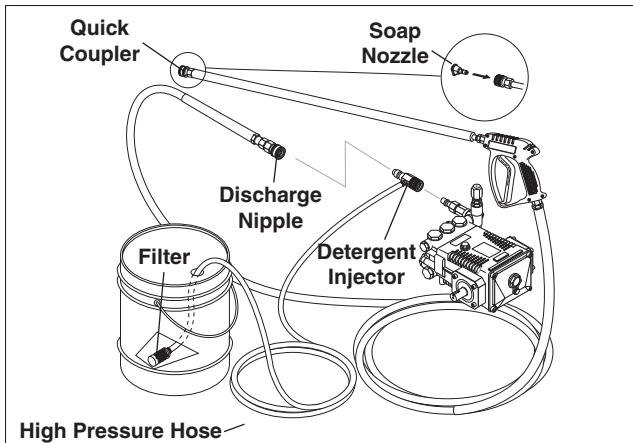
NOTE: For a more gentle rinse, select the white 40° or green 25° nozzle. To scour the surface, select the yellow 15° nozzle. To apply detergent select the black nozzle.

DETERGENTS AND GENERAL CLEANING TECHNIQUES



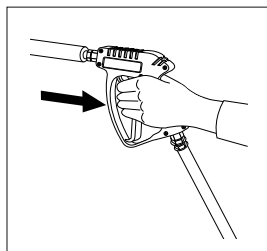
WARNING: Some detergents may be harmful if inhaled or ingested, causing severe nausea, fainting or poisoning. The harmful elements may cause property damage or severe injury.

STEP 1: Connect detergent injector to discharge nipple on machine. Connect high pressure hose to injector with quick coupler. (Check to make sure locking coupler sleeves are in proper position before applying water pressure.)



STEP 2: Use detergent designed specifically for pressure washers. Prepare detergent solution as required by the manufacturer. Fill a container with pressure washer detergent. Place the filter end of detergent suction tube into the detergent container.

STEP 3: With safety latch on spray gun engaged, secure black detergent nozzle into quick coupler.
NOTE: Detergent cannot be applied using yellow, green or white nozzles.



STEP 4: With the engine running, pull trigger to operate machine. Liquid detergent is drawn into the machine and mixed with water. Apply detergent to work area. Do not allow detergent to dry on surface.

IMPORTANT: You must flush the detergent injection system after each use by placing the suction tube into a bucket of clean water, then run the pressure washer in low pressure for 1-2 minutes.

THERMAL PUMP PROTECTION

If you run the engine on your pressure washer for 1-2 minutes without pressing the trigger on the spray gun, circulating water in the pump can reach high temperatures. When the water reaches this temperature, the pump protector engages and cools the pump by discharging the warm water onto the ground. This thermal device prevents internal damage to the pump.

CLEANING TIPS

Pre-rinse cleaning surface with fresh water. Place detergent suction tube directly into cleaning solution and apply to surface at low pressure (for best results, limit your work area to sections approximately 6 feet square and always apply detergent from bottom to top). Allow detergent to remain on surface 1-3 minutes. Do not allow detergent to dry on surface. If surface appears to be drying, simply wet down surface with fresh water. If needed, use brush to remove stubborn dirt. Rinse at high pressure from top to bottom in an even sweeping motion keeping the spray nozzle approximately 1 foot from cleaning surface. Use overlapping strokes as you clean and rinse any surface. For best surface cleaning action spray at a slight angle.

Recommendations:

- Before cleaning any surface, an inconspicuous area should be cleaned to test spray pattern and distance for maximum cleaning results.
- If painted surfaces are peeling or chipping, use extreme caution as pressure washer may remove the loose paint from the surface.
- Keep the spray nozzle a safe distance from the surface you plan to clean. High pressure wash a small area, then check the surface for damage. If no damage is found, continue to pressure washing.

CAUTION - Never use:

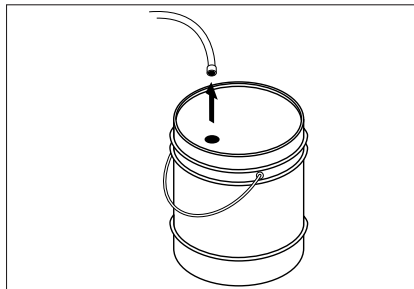
- Bleach, chlorine products and other corrosive chemicals
- Liquids containing solvents (i.e., paint thinner, gasoline, oils)
- Tri-sodium phosphate products
- Ammonia products
- Acid-based products

These chemicals will harm the machine and will damage the surface being cleaned.

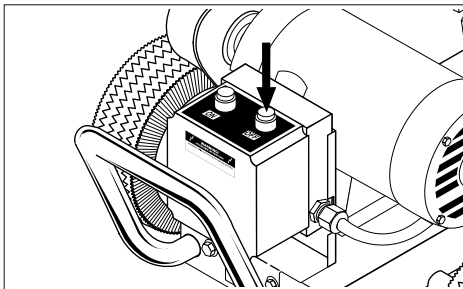
RINSING

It will take a few seconds for the detergent to clear. Apply safety latch to spray gun. Remove black soap nozzle from quick coupler. Select and install desired high pressure nozzle. **NOTE:** You can also stop detergent from flowing by removing detergent siphon tube from bottle.

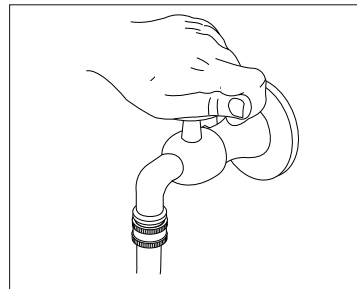
SHUTTING DOWN AND CLEAN-UP



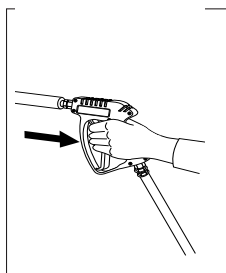
STEP 1: Remove detergent suction tube from container and insert into one gallon of fresh water. Slide nozzle forward for low pressure or to connect black detergent nozzle. Pull trigger on spray gun and siphon water for one minute.



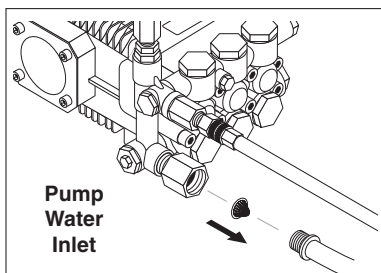
STEP 2: Turn off machine.



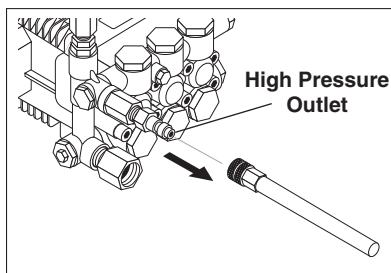
STEP 3: Turn off water supply.



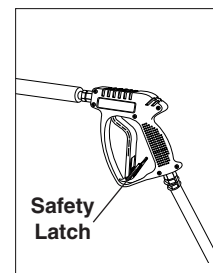
STEP 4: Press trigger to release water pressure.



STEP 5: Disconnect the garden hose from the water inlet on the machine.



STEP 6: Disconnect the high pressure hose from high pressure outlet.



STEP 7: Engage the spray gun safety lock.

STORAGE

Pump Storage



CAUTION

CAUTION: Always store your pressure washer in a location where the temperature will not fall below 32° F (0° C). The pump in this machine is susceptible to permanent damage if frozen.

FREEZE DAMAGE IS NOT COVERED BY WARRANTY.

If you must store your pressure washer in a location where the temperature is below 32° F, you can minimize the chance of damage to your machine by draining your machine as follows:

1. Stop the pressure washer and detach supply hose and high pressure hose. Squeeze the trigger of the spray gun to drain all water from the wand and hose.
2. Restart pressure washer and let it run briefly (about 5 seconds) until water no longer discharges from the high pressure outlet.

TROUBLESHOOTING

PROBLEM	POSSIBLE CAUSE	SOLUTION
PUMP RUNNING NORMALLY BUT PRESSURE LOW ON INSTALLATION	Pump sucking air	Check water supply and possibility of air seepage.
	Check valves sticking	Check and clean or replace if necessary.
	Unloader valve seat faulty	Check and replace if necessary.
	Nozzle incorrectly sized	Check and replace if necessary.
	Worn piston packing	Check and replace if necessary.
FLUCTUATING PRESSURE	Valves worn	Check and replace if necessary.
	Blockage in valve	Check and clean out if necessary.
	Pump sucking air	Check water supply connections.
	Worn piston packing	Check and replace if necessary.
	Insufficient water	Check filter and hose for breakage.
PRESSURE LOW AFTER PERIOD OF NORMAL USE	Nozzle worn	Check and replace if necessary.
	Suction or delivery valves worn	Check and replace if necessary.
	Suction or delivery valves blocked	Check and clean if necessary.
	Unloader valve seat worn	Check and replace if necessary.
	Worn piston package	Check and replace if necessary.
PUMP NOISY	Air in suction line	Check water supply and connections on suction line.
	Broken or weak suction or delivery valve spring	Check and replace if necessary.
	Foreign matter in valves	Check and clean if necessary.
	Worn bearings	Check and replace if necessary.
	Excessive temperature of water	Reduce to below 140° F.
PRESENCE OF WATER IN PUMP OIL	Oil seal worn	Check and replace if necessary.
	High humidity in air	Check and change oil twice as often.
	Piston packing worn	Check and replace if necessary.
WATER DRIPPING FROM UNDER PUMP	Piston packing worn	Check and replace if necessary.
	O-Ring plunger retainer worn	Check and replace if necessary.
WATER DRIPPING FROM PUMP PROTECTOR	Water supply pressure too high (over 90 psi)	Lower water supply pressure using a regulator.
	Spray gun is in the off position for over 5 minutes	Turn machine off if not in use for over 1-2 minutes.
OIL DRIPPING	Oil seal worn	Check and replace if necessary.
EXCESSIVE VIBRATION IN HIGH-PRESSURE HOSE	Irregular functioning of the pump valves	Check and replace if necessary.

TROUBLESHOOTING

PROBLEM	POSSIBLE CAUSE	SOLUTION
MOTOR WILL NOT START	Usually caused by line trouble, such as single phasing at the starter	Check source of power. Check overloads, fuses, controls, etc.
MOTOR OVERHEATING	Overload. Compare actual amps (measured) with nameplate rating	Locate and remove source of excessive friction in motor or load. Reduce load or replace with motor of greater capacity.
	Single phasing	Check current at all phases (should be approximately equal) to isolate and correct problem.
	Improper ventilation	Check external cooling fan to be sure air is moving properly across cooling fins. Excessive dirt build-up on motor. Clean motor.
	Unbalanced voltage	Check voltage at all phases (should be approximately equal) to isolate and correct the problem.
	Over voltage or under voltage	Check input voltage at each phase to motor.
	Open stator winding	Check stator resistance at all three phases for balance.
	Improper connections	Inspect all electrical connections for proper termination, clearance, mechanical strength and electrical continuity. Refer to wiring diagrams.
BEARING OVERHEATING	Misalignment	Check and align motor and driven equipment.
	Excessive belt tension	Reduce belt tension to proper point for load.
	Excessive grease in bearing	Remove grease until cavity is approximately 3/4 filled.
	Insufficient grease in bearing	Add grease until cavity is approximately 3/4 filled.
	Dirt in bearing	Clean bearing cavity and bearing. Repack with correct grease until cavity is approximately 3/4 filled.
GROWLING OR WHINING	Bad bearing	Replace bearing. Clean all grease from cavity and new bearing. Repack with correct grease until cavity is approximately 3/4 filled.

PREVENTATIVE MAINTENANCE

This pressure washer was produced with the best available materials and quality craftsmanship. However, you as the owner have certain responsibilities for the correct care of the equipment. Attention to regular preventative maintenance procedures will assist in preserving the performance of your equipment. Contact your dealer for maintenance. Regular preventative maintenance will add many hours to the life of your pressure washer. Perform maintenance more often under severe conditions.

Pump Oil (Non foaming) SAE 10W-40	Inspect	Daily inspect the oil level
	Change	After first 50 hours, then every 500 hours or annually
Replace High Pressure Nozzle		Every 6 months
Replace Quick Connects		Annually
Clean Water Screen/Filter		Weekly
Replace HP Hose		Annually if there is any sign of wear
Grease Motor		Every 10,000 hours or annually

NOTE: Read engine manual for any maintenance or service questions.

General Inspection

Inspect the motor at regular intervals, approximately every 500 hours of operation, or every 3 months, whichever occurs first. Keep the motor clean and the ventilation openings clear. The following steps should be performed at each inspection:

WARNING: Do not touch electrical connections before you first ensure that power has been disconnected. Electrical shock can cause serious or fatal injury. Only qualified personnel should attempt the installation, operation and maintenance of this equipment.

1. Check that the motor is clean. Check that the interior and exterior of the motor is free of dirt, oil, grease, water, etc. Oily vapor, paper pulp, textile lint, etc. can accumulate and block motor ventilation. If the motor is not properly ventilated overheating can occur and cause early motor failure.
2. Check all electrical connectors to be sure that they are tight.

Lubrication & Bearings

Bearing grease will lose its lubricating ability over time, not suddenly. The lubricating ability of a grease (over time) depends primarily on the type of grease, the size of the bearing, the speed at which the bearing operates and the severity of the operating conditions. Good results can be obtained if the following recommendations are used in your maintenance program.

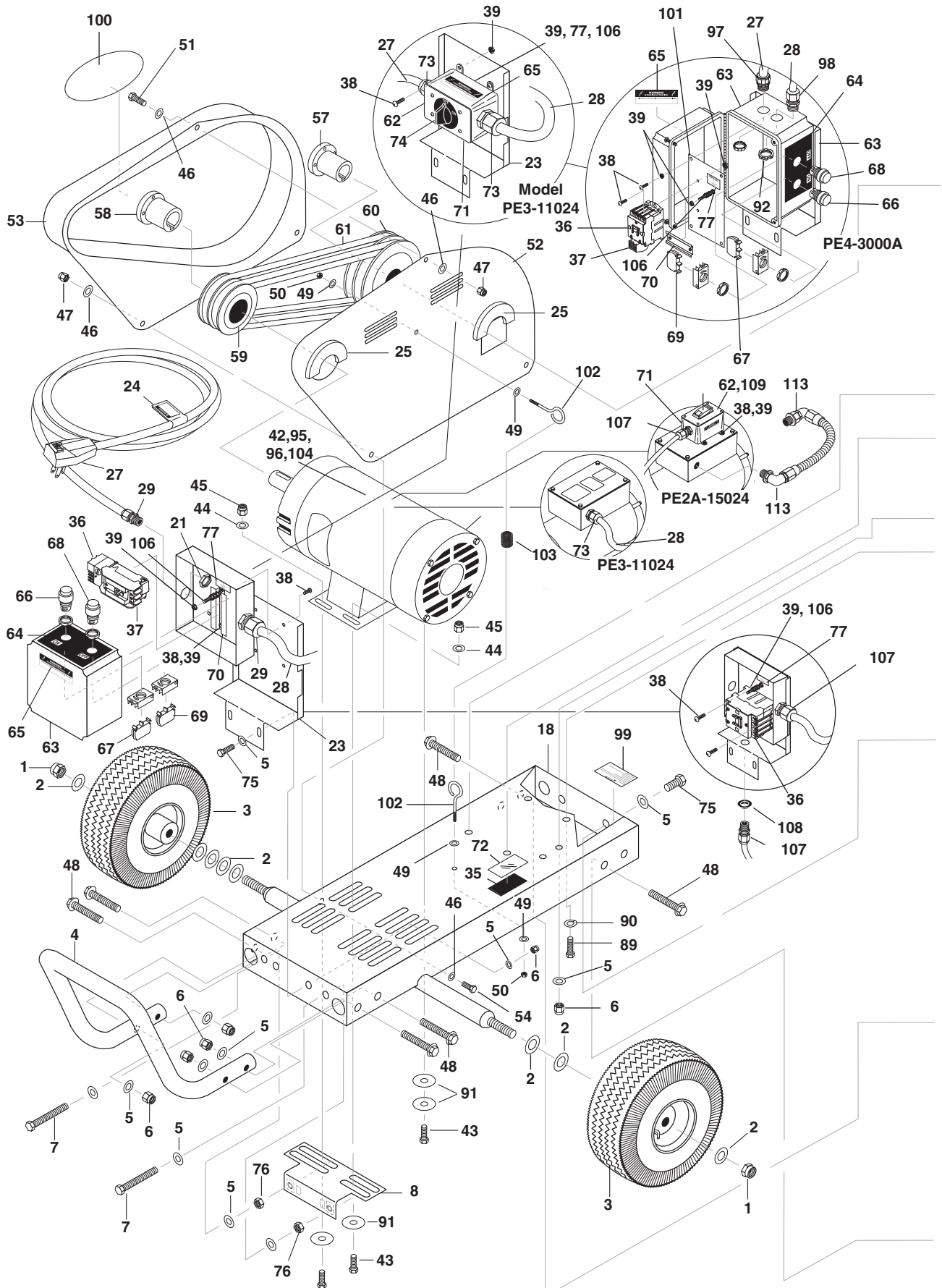
Type of Grease

A high grade ball or roller bearing grease should be used. Recommended greases for standard service conditions are: Shell Dolium R (Factory installed) or Chevron SRI.

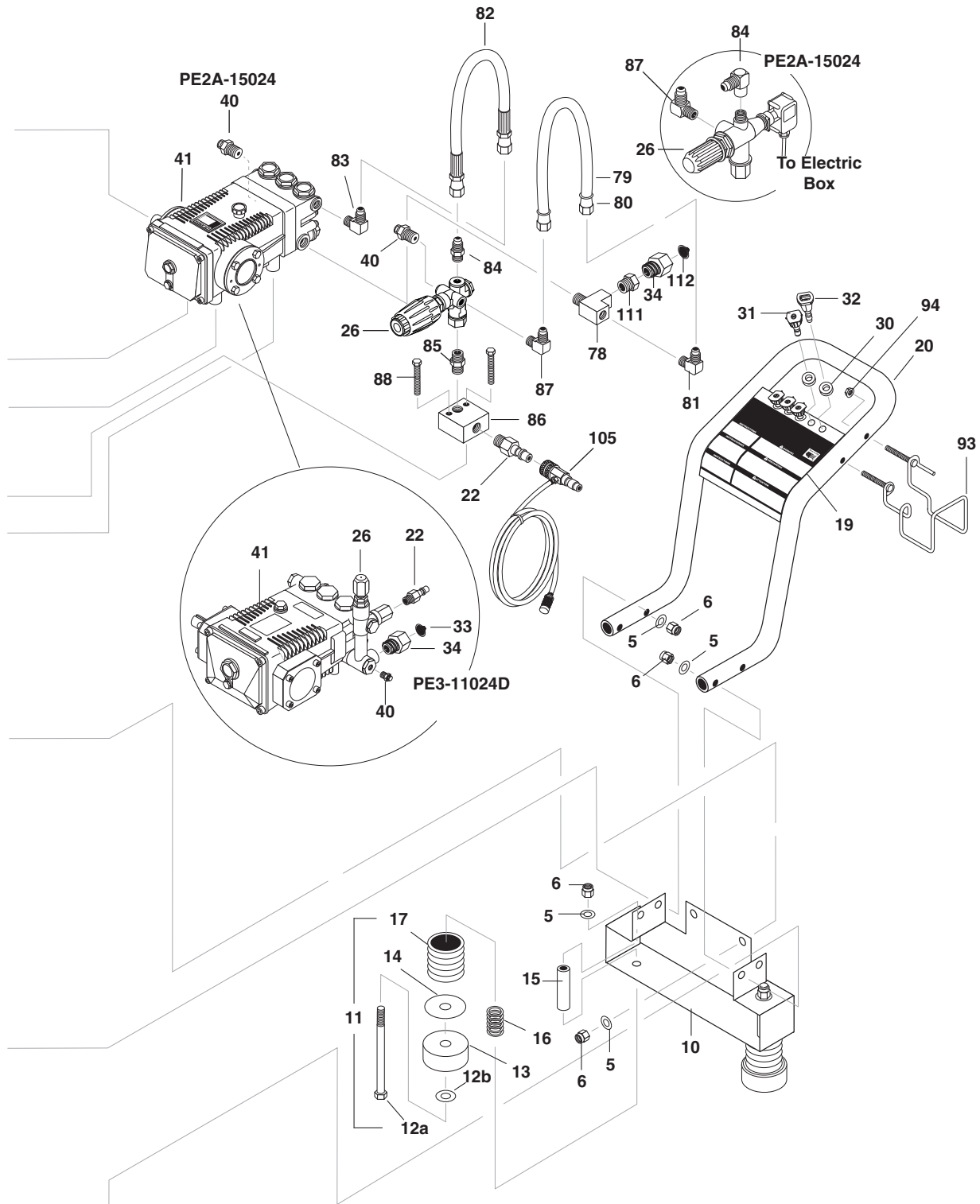
OIL CHANGE RECORD

Date Oil Changed Month/Day/Year	Estimated Operating Hours Since Last Oil Change	Date Oil Changed Month/Day/Year	Estimated Operating Hours Since Last Oil Change

EXPLODED VIEW



EXPLODED VIEW



EXPLODED VIEW PARTS LIST

ITEM	PART NO.	DESCRIPTION	QTY	ITEM	PART NO.	DESCRIPTION	QTY
1	8.718-835.0	Nut, Jam, ESNA, NC, 5/8"	2	27	9.802-431.0	Cord, w/Gfci, 120V/20 Amp, 36' (3-11024D, 2A-15024)	1
2	9.802-810.0	Washer, Flat, SAE, 5/8" (PE4-3000) (All Other PE Models)	8 8		9.802-429.0	Cord, Service 12/4 (4-20024B,C; 4-30024C; 5-30024C)	15 ft
3	8.758-460.0 8.754-186.0	Wheel 12 In. Rim Steel Qh Wheel Assy, 10" Gray Steel Rim W/Tube	2 2		9.802-430.0	Cord w/GFCI, 240V/30 Amp 36' (4-20024A)	1
4	8.925-055.0	Handle, Bumper, 1-1/4", Grey	1		9.802-437.0	Cord, Service,10/4 (4-30024B)	15 ft
5	9.198-004.0	Washer, 3/8" Uss F/w Zinc (PE3-11024, 2A-15024) (All Other PE Models)	20 22		9.802-434.0	GFCI, 240V, 40A, 1 PH, 37' Cord (4-30024A)	1
6	9.802-779.0	Nut, ESNA, NC, 3/8" (PE3-11024) (All Other PE Models)	16 14 18		9.802-426.0	Cord, Service, 8/4 (5-30024B)	15 ft
7	9.802-733.0	Bolt, 3/8" x 3-1/2", Tap	2	28	9.802-436.0	Cord, Service, SEO, 10/3 10/3 (4-20024A)	2.75 ft.
8	8.719-905.0	Bracket, Belt Tension	1		9.802-427.0	Cord Service SEO, 12/3 (3-11024D)	2 ft
9	9.802-771.0	▲ Screw, 10/32" x 3/4" (4-20024A)	3		9.802-429.0	Cord, Service, SEO, 12/4 (4-20024B,C; 4-30024C; 5-30024C)	2.75 ft
10	8.911-293.0	Bracket, Foot, Black	1		9.802-437.0	Cord, Service, SEO, 10/4	2.75ft
11	8.906-774.0	Foot Assembly (Items 11-17)	2		9.802-425.0	Cord, Service SEO 8/3 (4-30024A)	4.66ft
12a	8.718-684.0	Bolt, 3/8" x 5", NC	2		9.802-426.0	Cord, Service SEO, 8/4 (5-30024B)	2.75 ft
12b	9.802-817.0	Washer, 3/8" x 1", Steel	2	29	9.802-518.0	Fitting, STRT, LQ Tite, Plastic (4-20024A,B,C; 4-30024B,C; 5-30024C)	2
13	9.802-066.0	Pad, Soft Rubber	2		9.802-521.0	Strain Relief, Water Tight (5-30024B)	1
14	9.802-819.0	Washer, 2-1/2" x 7/16", Flat Washer	2		8.752-969.0	Strain Relief 1/2", Lt, Str, Npt 0.39-0.75 ID (2A-15024)	1
15	8.719-954.0	Tube, Foot, Bolt PC	2	30	9.802-064.0	Grommet, Rubber, 1/8"	5
16	8.719-091.0	Spring, Foot, Compression	2	31	8.712-346.0	Nozzle, 1504 Yellow (4-30024)	1
17	8.706-557.0	Bellows, Leg (Boot)	2		8.712-347.0	Nozzle, 2504 Green(4-30024)	1
18	8.911-289.0 8.911-297.0	Frame, Black, Welded (3-11024D, A2-15024) Frame, Large, Black, Welded (All Other Models)	1 1		8.712-348.0	Nozzle, 4004 White (4-30024)	1
19	8.758-290.0 8.753-809.0	Label Label Landa W/Instruction and Warn Label,Landa w/op Instr (PE2A)	1 1		8.712-358.0	Nozzle, 15055 Yellow (3-11024, 5-30024)	1
20	8.925-056.0	Grab Assy, Grey	1		8.712-359.0	Nozzle, 25055 Green (3-11024, 5-30024)	1
21	9.802-170.0	Coupler, 3/8" Plug, Female Steel/Zinc	1		8.712-360.0	Nozzle, 4055 White (3-11024, 5-30024)	1
22	9.802-171.0	Nipple, 3/4" x 3/8" Male	1		8.712-362.0	Nozzle, 1506 Yellow (4-20024)	1
23	8.911-244.0 8.911-245.0	Bracket, Electrical Box (All Models except 4-30024A) Bracket, Electrical Box (4-30024A)	1 1		8.712-363.0	Nozzle, 2506 Green (4-20024)	1
24	8.932-969.0	Label, Warning Service Cord	1		8.712-364.0	Nozzle, 4006 White (4-20024)	1
25	8.932-993.0	Cushion, Pump	2		8.712-334.0	Nozzle, 2503 Green (2A-15024)	2
26	Unloader, See Specifications Pages				8.712-333.0	Nozzle, 1503, Yellow (2A-15024)	2

EXPLODED VIEW PARTS LIST

ITEM	PART NO.	DESCRIPTION	QTY	ITEM	PART NO.	DESCRIPTION	QTY
32	8.712-398.0	Nozzle, Brass, Soap	1	55	8.900-246.0	▲Label, PE(Except 2A-15024)	1
34	8.757-203.0	Swivel, 1/2" M-NPTF x 3/4" GHF	1	56	8.900-403.0	▲Label, 3-1100	1
35	9.800-013.0	Label, Indoor Use	1		8.900-409.0	▲Label, 4-2000	1
36	Overload, See Specifications Pages				8.900-411.0	▲Label, 4-3000	1
37	Contactor, See Specifications Pages				8.900-414.0	▲Label, 5-3000	1
38	9.802-759.0	Screw, 10/32" x 1/2" (3-11024D; 4-02007A; 2A-15024)	4	57	Pump Bushing, See Specifications Pages		
		(4-30024A)	7	58	Motor Bushing, See Specifications Pages		
		(4-20024B,C; 4-30024B,C; 5-30024B,C)	5	59	Motor Pulley, See Specifications Pages		
39	9.802-695.0	Nut, 10/32" Keps (4-20024A, 4-20024B,C; 4-30024B,C; 5-30024B,C)	6	60	Pump Pulley, See Specifications Pages		
		(2A-15024, 3-11024D)	7	61	Belt, See Specifications Pages		
		(4-30024A)	10	62	9.802-478.0	Lid, Plastic, Carlon (3-11024)	1
40	8.707-254.0	Pump Protector, 3/8", PTP (All Models Except 3-11024)	1		8.912-227.0	Plate, Switch Remote(2A-15024)	1
	9.804-025.0	Pump Protector 1/4" 145° (3-11024)	1	63	8.716-271.0	Enclosure, Fiberglass, Nema 4X (except 3-11024, 4-30024A)	1
	8.707-256.0	Pump Protector, 1/2" (2A-15024)	1		9.802-476.0	Box, Plastic 10" x 8" x 6" (4-30024A)(Except 2A-15024)	1
41	Pump, See Specifications Pages			64	8.900-315.0	Label, OFF/ON for Push Button (All Models Except 3-11024, 2A-15024)	1
42	Motor, See Specifications Pages			65	9.800-016.0	Label, Disconnect Power Supply	1
43	9.802-710.0	Bolt, 5/16" x 1", NC HH (3-11021, 2A-15024)	4	66	9.803-974.0	Switch, Green Push Button, CH E22PB3 (All Models Except 3-11024, 2A-15024)	1
	9.802-722.0	Bolt, 3/8" x 1-1/4", NC HH (All Models Except 3-11021, 2A-15024)	4	67	9.802-535.0	Block, Contact, N/O, CH E22B2 (All Models Except 3-11024, 2A-15024)	1
44	8.718-980.0	Washer, 5/16" Flat (3-11021, 2A-15024)	4	68	9.803-973.0	Switch, Red Push Button, CH E22EB2(All Models Except 3-11024, 2A-15024)	1
	9.802-807.0	Washer, 3/8" Flat (All Models Except 3-11021, 2A-15024)	4	69	9.802-534.0	Block, Contact, N/C, CH E22B1 (All Models Except 3-11024, 2A-15024)	1
45	9.802-776.0	Nut, 5/16" ESNA (3-11021, 2A-15024)	4	70	9.802-457.0	Din Rail (All Models Except 3-11024D, 2A-15024)	4"
	9.802-779.0	Nut, 3/8" ESNA (All Models Except 3-11021, 2A-15024)	4	71	9.802-477.0	Box, Electric (3-11024,2A-15024)	1
46	8.718-980.0	Washer, 5/16" Flat	6	72	9.800-034.0	Label, Clear Lexan	1
47	9.802-776.0	Nut, 5/16" ESNA, NC	3	73	9.802-518.0	Strain Relief, STRT, LQ Tite Large, 3/4" (3-11024)	2
48	8.718-674.0	Bolt, 3/8-16 X 2-1/4",GR8.2 Whiz Loc	8	74	9.802-450.0	Switch, 2 Pos., 1-3 PH (3-11024)	1
49	9.802-802.0	Washer, 1/4" Flat, SAE	4	75	9.802-720.0	Bolt, 3/8" x 1", NC	4
50	9.802-773.0	Nut, 1/4" ESNA, NC	2	76	9.802-789.0	Nut, 3/8" Hex NC	2
51	8.718-618.0	Bolt, 5/16" x 3/4", NC HH	1	77	9.800-040.0	Label, Ground	1
52	8.933-026.0	Back Plate, Belt Guard, Large (PE4-2000)	1	78	8.706-860.0	Tee, 1/2" (4-20024, 4-30024, 5-30024, 2A-15024)	1
	8.911-285.0	Back Plate, Belt Guard, Small (3-11024, 2A-15024)	1	79	9.802-259.0	Hose, 1/2" Push-On (2A-15024, 4-20024, 4-30024, 5-30024)	1.3 ft
	8.920-582.0	Black Plate, Belt Guard, Large (PE5-3000, PE4-3000)	1	80	9.802-151.0	Swivel, 1/2" JIC Fem, Push-On (2A-15024, 4-20024, 4-30024, 5-30024)	2
53	8.706-655.0	Belt Guard, Small (PE3-11024, 2A-15024)	1				
	8.706-656.0	Belt Guard, Large (PE)	1				
54	9.802-710.0	Bolt, 5/16" x 1" NC, HH	2				

EXPLODED VIEW PARTS LIST

ITEM	PART NO.	DESCRIPTION	QTY	ITEM	PART NO.	DESCRIPTION	QTY
81	8.757-391.0	Elbow brass 1/2 SAE (M) x 1/2 NPTF (M) (2A-15024, 4-20024, 4-30024, 5-30024)	1	98	9.802-518.0	Strain Relief, 3/4 Watertight Plastic (4-30024A)	1
82	8.918-424.0	Hose, 3/8" x 25", 2 Wire, Pressure Loop (4-20024, 4-30024, 5-30024)	1	99	9.800-049.0	Label, Manufacturer's Cleaning Solution	1
	8.918-422.0	Hose, 3/8" x 20", 2 Wire, Pressure Loop (2A-15024)	1	100	8.757-793.0	Label Landa 50th anniversary	1
83	8.757-616.0	Elbow steel 1/2 JIC (M) x 3/8 BSPP (M) (2A-15024, 4-20024, 4-30024, 5-30024)	1	101	9.803-032.0	Stand-Off Electrical Box (4-30024A)	1
84	8.757-655.0	Adapter steel 1/2 JIC (M) x 3/8 NPTF (M) (4-20024, 4-30024, 5-30024)	1	102	8.718-708.0	Eye Bolt, 1/4" x 1"	2
	8.757-935.0	Adapter steel 1/2 JIC x 3/8 NPTF (F) 90° (2A-15024)	1	103	8.719-073.0	Spring, Pull, Belt Guard	1
85	8.757-653.0	Nipple steel hex 3/8" NPTF x 3/8" BSPP (4-20024, 4-30024, 5-30024, 2A-15024)	1	104	9.800-040.0	▲ Label, Ground (Motor)	1
86	9.802-870.0	Block, Unloader, 3/8" x 3/8", 1.25, Steel (2A-15024, 4-20024, 4-30024, 5-30024)	1	105	9.802-225.0	Chemical Injector Assy.	1
87	8.757-262.0	Elbow brass 1/2 SAE (M) x 3/8 NPTF (M) (2A-15024, 4-20024, 4-30024, 5-30024)	1	106	9.802-762.0	Screw, 10/32" x 1-1/4" Ground (All Models Except 3-11024D)	1
88	9.802-728.0	Bolt, 3/8" x 2", NC HH (4-20024, 4-30024, 5-30024, 2A-15024)	2		9.802-699.0	Screw, 10/32" x 3/4" Ground (3-11024D)	1
89	9.802-744.0	Bolt, 10mm x 20mm, HH (All Models except 3-11024)	4	107	9.802-514.0	Strain Relief 1/2", Lt, Str. Npt 3 (2A-15024)	3
	9.802-741.0	Bolt, 8mm x 16mm HH (3-11024, 2A-15024)	4	108	8.706-733.0	Bushing, 1/2" Snap (2A-15024)	2
90	9.802-816.0	Washer, 7/16" Lock, Split (All Models except 3-11024)	4	109	8.900-840.0	Label, Remote Switch, Home Depot (2A-15024)	1
	9.802-814.0	Washer, 3/8", Lock, Split Ring (3-11024, 2A-15024)	4	111	8.756-874.0	Adapter steel 1/2 NPTF(F) x 1/2 BSPP(M) (2A-15024)	1
91	9.802-811.0	Washer, 3/8" x 1-1/2", Fender (All Models Except 3-11024)	6	112	9.804-016.0	Filter Screen Washer, Garden Hose/30MESH	
	8.719-000.0	Washer, 5/16" x 1-1/4" Fender (3-11024)	6	113	9.802-517.0	Connector, 1/2" L/T, 90 Drg	2
92	9.802-523.0	Locknut, 3/4"	2			▲ Not Shown	
93	9.803-098.0	Hanger, Hose & Wand	1				
94	9.802-778.0	Nut, 5/16" Whiz Loc, Flange	2				
95	9.802-518.0	▲ Strain Relief, Watertite (3-11024D; 4-20024A,B,C; 4-30024B,C;)	1				
	9.803-279.0	▲ Strain Relief, 1" Metal (4-30024A, 5-30024C)	1				
	8.716-565.0	Strain Relief, 1" (5-30024B)	1				
96	9.803-280.0	Locknut, 1"(4-30024A; 5-30024B,C)	1				
97	9.802-521.0	Strain Relief, 3/4 Watertight (4-30024A)	1				

SPECIFICATIONS

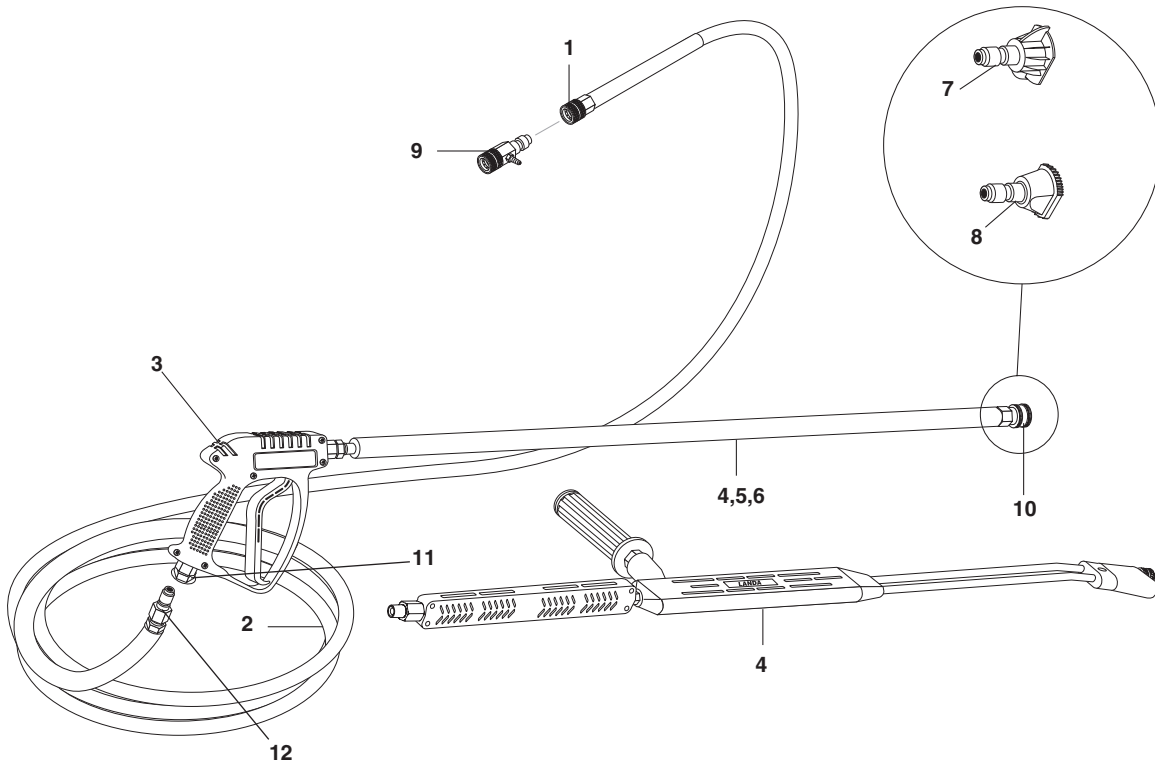
PARTS SPECIFICATIONS

Model	PUMP						MOTOR			
	Pump	Pump Part No.	Unloader Part No.	Pump Pulley	Pump Pulley Part No.	Pump Bushing	Bushing Part No.	Motor Size	Motor Voltage/ph	Motor Hz
2A-15024D	LBP3030	8.929-262.0	8.754-696.0	AK64H	9.804-029.0	24MM	9.802-402.0	2HP	120V/1PH	60
3-11024D	LBP3030	8.929-262.0	8.754-696.0	AK74H	9.802-369.0	24MM	9.802-402.0	2HP	120V/1PH	60
4-20024A	LT6036	8.921-712.0	8.750-299.0	2AK74H	9.802-374.0	25MM	9.802-403.0	6.2HP	230V/1PH	60
4-20024B	LT6036	8.921-712.0	8.750-299.0	2AK74H	9.802-374.0	25MM	9.802-403.0	6.2HP	230V/3PH	60
4-20024C	LT6036	8.921-712.0	8.750-299.0	2AK74H	9.802-374.0	25MM	9.802-403.0	6.2HP	460V/3PH	60
4-30024A	LT6036	8.921-712.0	8.750-299.0	2BK80H	8.715-592.0	25MM	9.802-403.0	7.5HP	230V/1PH	60
4-30024B	LT6036	8.921-712.0	8.750-299.0	2BK80H	8.715-592.0	25MM	9.802-403.0	7.5HP	230V/3PH	60
4-30024C	LT6036	8.921-712.0	8.750-299.0	2BK80H	8.715-592.0	25MM	9.802-403.0	7.5HP	460V/3PH	60
5-30024B	LT6036	8.921-712.0	8.750-299.0	2BK60H	9.802-387.0	25MM	9.802-403.0	10HP	230V/3PH	60
5-30024C	LT6036	8.921-712.0	8.750-299.0	2BK60H	9.802-387.0	25MM	9.802-403.0	10HP	460V/3PH	60

SPECIFICATIONS

MOTOR (CON'T)									
Model	Motor Model	Motor Pulley	Pulley Part No.	Motor Bushing	Bushing Part No.	Belt Size	Belt Part No.	Contactor Part No.	Overload Part No.
2A-15024D	8.754-710.0	AK20X5/8"	8.715-516.0	N/A	N/A	AX31 (1)	9.804-026.0	9.802-543.0	N/A
3-11024D	8.754-710.0	AK32X5/8"	9.804-004.0	N/A	N/A	AX35 (1)	9.803-683.0	9.802-543.0	N/A
4-20024A	9.802-336.0	2AK46H	8.715-547.0	HX1-1/8"	9.802-400.0	AX40 (2)	9.804-005.0	8.724-282.0	N/A
4-20024B	8.751-004.0	2AK46H	8.715-547.0	HX1-1/8"	9.802-400.0	AX40 (2)	9.804-005.0	8.724-273.0	8.724-304.0
4-20024C	8.751-004.0	2AK46H	8.715-547.0	HX1-1/8"	9.802-400.0	AX40 (2)	9.804-005.0	8.724-271.0	8.724-303.0
4-30024A	8.715-097.0	2BK40H	9.802-384.0	HX1-3/8"	9.802-401.0	BX38 (2)	9.802-417.0	8.724-282.0	8.724-306.0
4-30024B	8.755-604.0	2BK40H	9.802-384.0	HX1-3/8"	9.802-401.0	BX38 (2)	9.802-417.0	8.724-273.0	8.724-304.0
4-30024C	8.755-604.0	2BK40H	9.802-384.0	HX1-3/8"	9.802-401.0	BX38 (2)	9.802-417.0	8.724-271.0	8.724-312.0
5-30024B	8.755-605.0	2BK36H	9.802-383.0	HX1-3/8"	9.802-401.0	BX38 (2)	9.802-417.0	8.724-277.0	8.724-305.0
5-30024C	8.755-605.0	2BK36H	9.802-383.0	HX1-3/8"	9.802-401.0	BX38 (2)	9.802-417.0	8.724-278.0	8.724-312.0

HOSE & SPRAY GUN ASSEMBLY

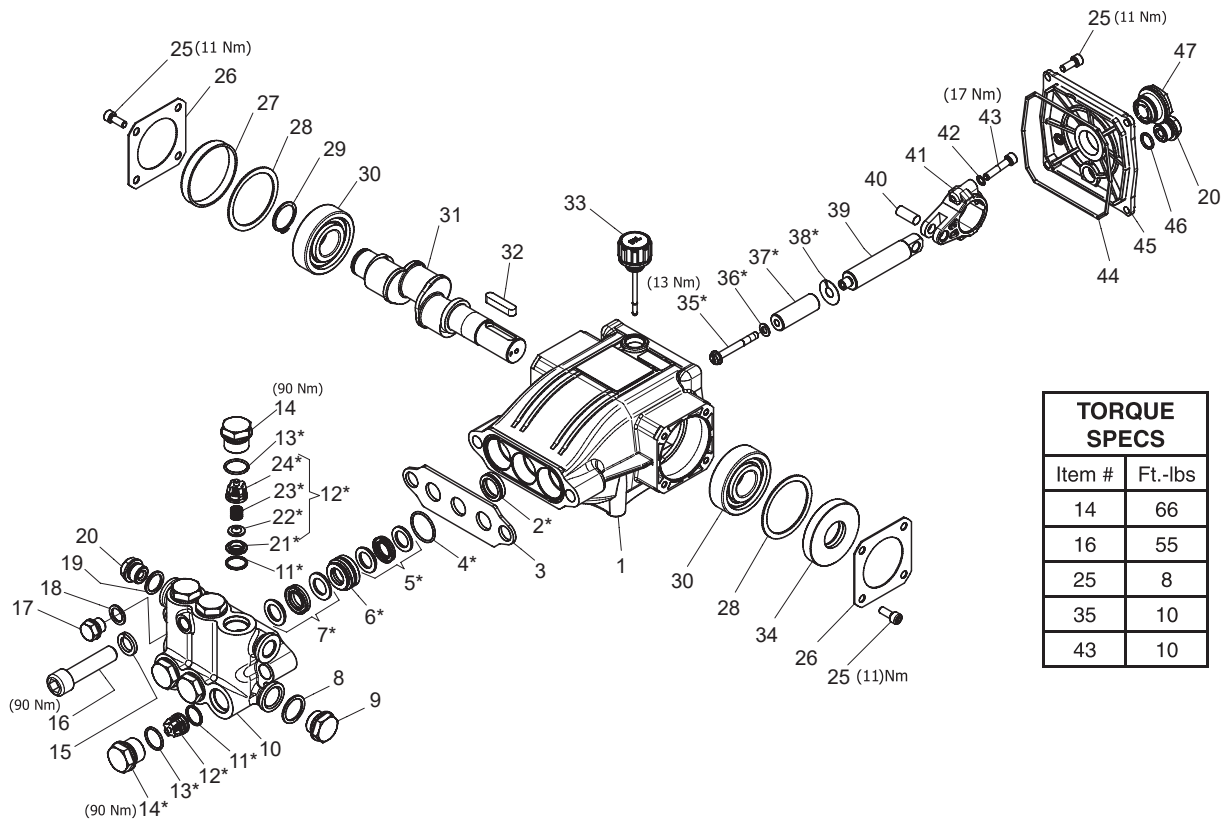


HOSE & SPRAY GUN ASSEMBLY PARTS LIST

ITEM	PART NO.	DESCRIPTION	QTY
1	9.802-166.0	Coupler, 3/8" Female	1
	9.802-100.0	▲ Quick Coupler O-Ring Large	1
2	8.925-132.0	Hose, 3/8" X 50' 2W 6000PSI SW/SO/CPL (PE4-30 and PE5-30 models)	1
	8.925-130.0	Hose, 3/8" X 50' 1W 4000PSI SW/SO/CPL (PE3-11, PE2A-15024 and PE4-20 models)	1
3	8.751-234.0	Gun, Landa, 5000 PSI, 10.4 GPM	1
4	8.904-430.0	Wand, Straight, Assy (This assembly contains the items 5,6,10)	1
	8.711-293.0	Wand, VP ZNC1/4 AL 344 W/Cplr W/Soap Nzz (2A-15024)	1
5	8.711-279.0	Wand, SS	1
6	8.711-323.0	Cover, Wand	1
7	Nozzle, See Page 16, Item # 31		
8	Nozzle, See Page 17, Item # 32		
9	8.756-797.0	Injector, Chemical, Non ADJ 0.083(2.1MM)	1
10	9.802-164.0	Coupler, 1/4" Female	1
	9.802-096.0	▲ Quick Coupler O-Ring Small	1
11	9.802-169.0	Coupler, 3/8" Socket, Male, Brass (2A-15024)	1
12	9.802-170.0	Coupler, 3/8" Plug Female (2A-15024)	1

▲ Not Shown

LBP3030R PUMP EXPLODED VIEW



TORQUE SPECS	
Item #	Ft.-lbs
14	66
16	55
25	8
35	10
43	10

LB3030R PUMP EXPLODED VIEW PARTS LIST

ITEM	PART NO.	DESCRIPTION	QTY	ITEM	PART NO.	DESCRIPTION	QTY
1	8.754-841.0	Crankcase	1	20*	8.707-262.0	Plug, Brass G3/8	2
2*	See Kits Below	Plunger Oil Seal	1	21*	See Kits Below	Valve Seat	
3	8.758-216.0	Spacer	1	22*	See Kits Below	Valve Plate	6
4*	See Kits Below	"O"-Ring Ø1.78 X 26.7	3	23	See Kits Below	Valve Spring	6
5*	See Kits Below	"U"-Seals	3	24	See Kits Below	Valve Cage	6
6*	See Kits Below	Pressure Ring	3	25	See Kits Below	Screw, M6 X 16	12
7*	See Kits Below	"U"-Seals	3	26	8.717-137.0	Bearing Cover	2
8	9.803-199.0	Washer, Copper G1/2	3	27	9.803-954.0	Bearing Seal	1
9	9.802-926.0	Plug, Brass G1/2	1	28	8.754-843.0	Seal Spacer, Crankshaft	2
10*	8.759-028.0	Manifold	1	29	9.802-914.0	Snap Ring, 25 mm	1
11*	8.717-233.0	O-ring Ø1.78 X 15.6	6	30	9.803-955.0	Bearing, Ball	2
12*	See Kits Below	Valve Assembly	6	31	8.754-829.0	Shaft, 24 mm 3030	1
13	9.803-948.0	O-ring Ø1.78 X 18.77	6		8.754-830.0	Shaft, 24 mm 4025	1
14	9.803-949.0	Valve Plug	6	32	9.803-167.0	Key, Crankshaft	1
15*	8.754-850.0	Washer, Lock	1	33	8.754-219.0	Oil Dipstick	1
16	8.929-349.0	Bolt Manifold M14x60	2	34	8.933-010.0	Seal, Crankshaft	1
17	8.754-851.0	Plug Brass 1/4	1	35*	8.754-855.0	Bolt, Plunger	3
18*	8.718-973.0	Washer cooper G1/4	2	36*	8.754-092.0	Spacer, Copper	3
19*	9.803-198.0	Washer, Copper G3/8	2	37*	8.754-848.0	Plunger, 16 mm	3

LBP3030R PUMP EXPLODED VIEW PARTS LIST

ITEM	PART NO.	DESCRIPTION	QTY
38*	9.803-962.0	Spacer, Copper	3
39	8.754-827.0	Plunger Rod	3
40	9.803-965.0	Connecting Rod Pin	3
41	9.803-966.0	Connecting Rod	3
42	9.803-218.0	Washer, 6 mm	6
43	8.933-020.0	Screw, Connecting Rod	6
44	8.754-847.0	O-ring Ø2.62 X 111.62	1
45	8.754-842.0	Cover, Crankcase	1
46	9.803-906.0	O-ring Ø1.78 X 14	1
47	9.803-202.0	Sight Glass, G3/4	1

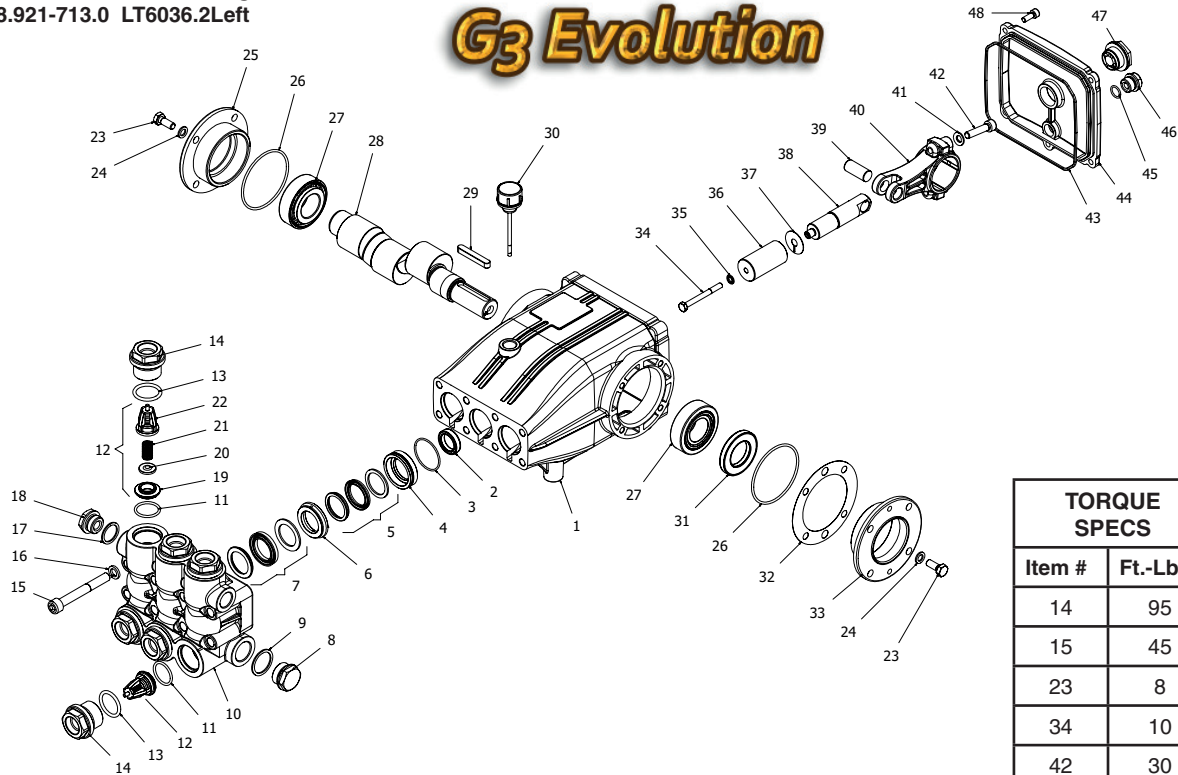
* Available in kit (See below)

REPAIR KIT NUMBER	8.754-856.0	8.758-081.0	8.754-858.0	8.754-859.0	9.803-937.0
Kit Description	Plunger Seals 16mm	Steel Packing 16mm	Pluger 16 mm	Complete Valve	Plunger Oil Seals
ITEM NUMBERS INCLUDED	4, 5, 7	4, 5, 6, 7	35, 36, 37, 38	11,12, 13	2
NUMBER OF CYLINDERS KIT WILL SERVICE	3	3	1	6	3

LT.2 PUMP EXPLODED VIEW AND PARTS LIST

8.921-710.0 LT4540.2 Right
 8.921-711.0 LT4540.2 Left
 8.921-712.0 LT6036.2 Right
 8.921-713.0 LT6036.2Left

G3 Evolution



TORQUE SPECS	
Item #	Ft.-Lbs.
14	95
15	45
23	8
34	10
42	30
48	8

LT PUMP EXPLODED VIEW PARTS LIST

ITEM	PART NO.	DESCRIPTION	QTY	ITEM	PART NO.	DESCRIPTION	QTY
1	8.752-825.0	Crankcase	1	19	See Kit Below	Valve Seat	6
2*	See Kit Below	Plunger Oil Seal	3	20	See Kit Below	Valve Plate	6
3*	See Kit Below	O-Ring Ø1.78 x 37.82	3	21	See Kit Below	Valve Spring	6
4*	See Kit Below	"Pressure Ring, Brass	3	22	See Kit Below	Valve Cage	6
5*	See Kit Below	"U" Seal 18mm	3	23	8.725-830.0	Hexagonal Screw	8
6*	See Kit Below	Intermediate Ring, 18mm	3	24	9.802-884.0	Washer	8
7*	See Kit Below	"U" Seal, 18mm	3	25	9.803-182.0	Closed Bearing Housing	1
8	9.802-926.0	Brass Plug, G1/2	1	26	9.803-186.0	O-Ring Ø2.62 x 71.12	2
9	9.803-199.0	Cooper Washer 1/2	1	27	9.803-160.0	Roller Bearing	2
10	8.753-816.0	Manifould Housing	1	28	8.753-818.0	Crankshaft Ø24 (4540)	1
11*	9.804-498.0	O-Ring Ø2.62 x 25.1	6		8.752-827.0	Crankshaft Ø24 (6036)	1
12*	See Kit Below	Valve Assembly	6	29	9.803-167.0	Cranckshaft Key	1
13*	9.803-193.0	O-Ring 3068	6	30	8.752-834.0	Oil Dipstick	1
14	9.802-928.0	Valve Plug	6	31	9.803-139.0	Crankshaft Seal	1
15	8.753-817.0	Manifould Stud Bolt	8	32	9.803-177.0	Shim	2
16	9.802-890.0	Lock Washer	8	33	9.803-181.0	Bearing Housing	3
17	8.719-008.0	Cooper Washer 3/8	1	34*	8.752-841.0	Plunger Bolt	3
18	8.707-262.0	Brass Plug 3/8	1				

LT PUMP EXPLODED VIEW PARTS LIST (CONT)

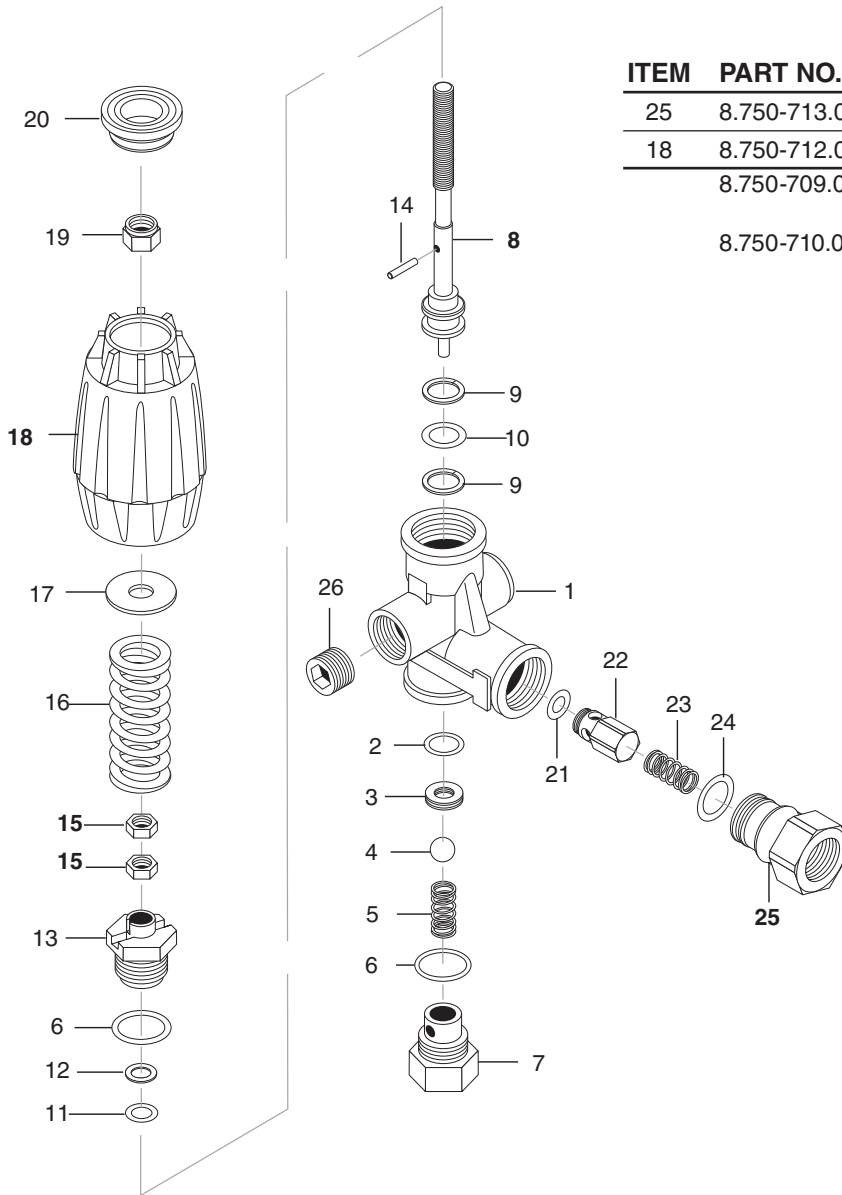
ITEM	PART NO.	DESCRIPTION	QTY
35*	8.752-820.0	Bonded Seal	3
36*	8.753-819.0	Plunger 18mm	3
37*	8.752-823.0	Copper Spacer	3
38	See Kit Below	Plunger Rod	3
39	8.752-822.0	Connecting Rod Pin	3
40	8.752-821.0	Connecting Rod	3
41	9.802-889.0	Spring Washer	6
42	9.802-937.0	Connecting Rod Screw	6
43	9.803-194.0	O-Ring Ø2.62 x 152.07	1
44	8.752-826.0	Crankcase Cover	1
45	9.803-906.0	O-Ring Ø1.78 x 14.00	1
46	8.707-262.0	Brass Plug G 3/8	1
47	9.803-202.0	Sight Glass G3/4	1
48	8.752-824.0	Cover Screw	5

* Part available in kit (See below)

REPAIR KIT NUMBER	8.753-821.0	8.753-822.0	8.753-823.0	8.753-824.0	8.752-835.0
KIT DESCRIPTION	Plunger Seal 18mm	Seal Packing 18mm	Plunger 18mm	Complete Valve	Plunger Oil Seals
ITEM NUMBERS INCLUDED	3,5,7	3,4,5,6,7	34,35,36,37	11,12,13	2
NUMBER OF CYLINDERS KIT WILL SERVICE	3	1	1	6	3

VRT3 UNLOADER EXPLODED VIEW AND PART S LIST

8.750-297.0, 8 GPM, 2320 PSI
 8.750-298.0, 8 GPM, 3630 PSI
 8.750-299.0, 8 GPM, 4500 PSI



ITEM	PART NO.	DESCRIPTION	QTY
25	8.750-713.0	Outlet Fitting	1
18	8.750-712.0	Knob, Unloader	1
	8.750-709.0	Repair Kit, VRT3, 2320/3630 PSI	
	8.750-710.0	Repair Kit, VRT3, 4500 PSI (Kit Items: 1, 4, 8-12, 16, 21-22)	

Unloader Adjustment Procedures

1. Remove lock nut (Item 19).
2. Remove adjustment knob (Item 18).
3. Loosen the two (2) nuts (Item 15), move them upward on stem (Item 8) until you see 4 or more threads below the nut.
4. Re-attach adjusting knob (Item 18).
5. Start machine. Open the trigger of the spray gun. Increase pressure by turning adjustment knob (Item 18) clockwise until pressure is at the desired operating pressure.
6. Remove the adjustment knob (Item 18), tighten the lower nut (Item 15) tightly against the upper nut (Item 15). Reattach adjustment knob (Item 18) and screw down until contact is made with the nuts (Items 15). Screw down lock nut (Item 19) onto the stem (Item 8) until the threads cut into the nylon insert of the lock nut (Item 19).

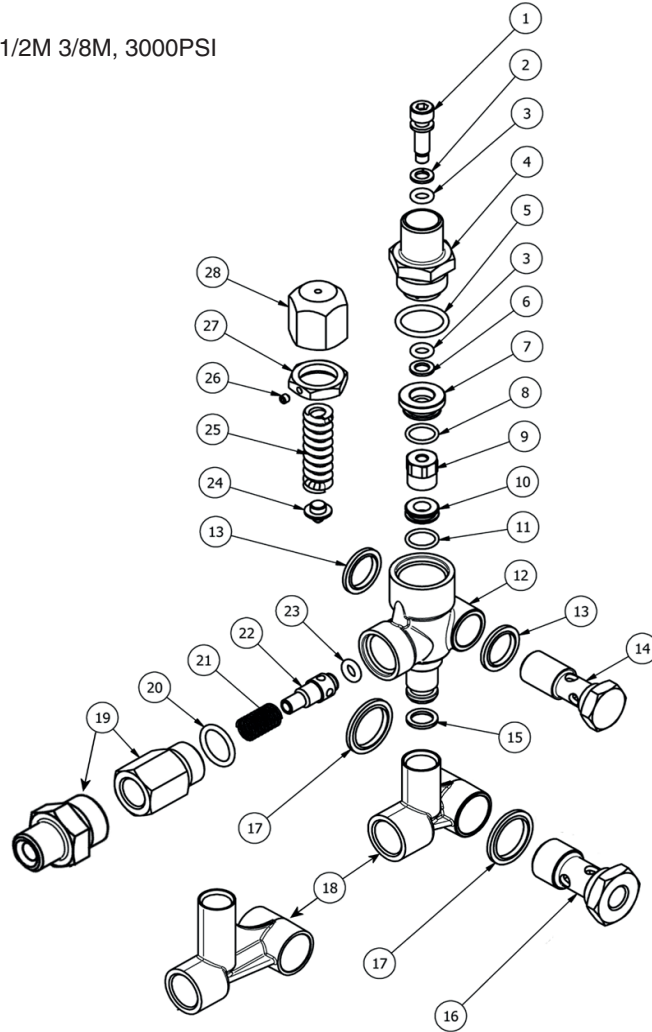
*If adjustment knob (Item 18) DOES NOT make contact with upper nut (Items 15), remove adjusting knob (Item 18), re-adjust (raise) nuts (Items 15) on stem (Item 8) and re-attach adjustment knob (Item 18), then repeat step #6.

**If adjustment knob (Item 18) DOES make contact with upper nut; release the trigger of the spray gun and watch the pressure gauge for the pressure increase ("spike"). This "spike" SHOULD NOT exceed 500 psi above the operating pressure. If "spike" pressure exceeds the 500 psi limit, remove the adjusting knob (Item 18) and re-adjust (lower) the nuts (Items 15) on the stem (Item 8).

Re-attach the adjusting knob (Item 18), then repeat step #6.

VBT UNLOADER EXPLODED VIEW

8.754-696.0
UNLOADER, VBT BANJO 1/2M 3/8M, 3000PSI



VBT UNLOADER EXPLODED VIEW PARTS LIST

ITEM	PART #	DESCRIPTION	KIT	QTY	ITEM	PART #	DESCRIPTION	KIT	QTY
1*	8.754-929.0	Stem	C	1	17	9.803-914.0	Seal Washer 1/2)		1
2*	9.803-912.0	Backup Ring	A	1	18	8.754-937.0	Bypass Manifold		1
3*	8.754-930.0	O-ring, Ø2.62 x 6.02	A	2	19	9.802-892.0	Outlet Connector 3/8 MPT		1
4	8.730-882.0	Stem Connector		1	20*	9.803-191.0	O-ring, Ø2.62 X 17.13	A,B	1
5*	9.803-193.0	O-ring, Ø2.62 x 20.24	A	1	21*	8.933-017.0	Poppet Spring	B	1
6*	9.803-908.0	Backup Ring	A	1	22*	8.754-939.0	Poppet	B	1
7	9.803-907.0	Guide Bushing		1	23*	8.754-940.0	O-ring, Ø3 x 6	A,B	1
8*	9.803-906.0	O-ring, Ø1.78 x 14	A	1	24*	8.754-961.0	Plate	C	1
9*	8.754-959.0	Ball SubAssembly	C	1	25*	8.933-018.0	Spring 1500-4000 PSI	C	1
10*	8.754-933.0	Seat	C	1	26	8.933-021.0	Set Screw		1
11*	8.754-934.0	O-ring, Ø1.78 x 12.42	A,C	1	27	9.803-925.0	Nut		1
12	8.754-935.0	Valve Body		1	28	9.803-926.0	Knob, Brass, Unloader		1
13	9.802-893.0	Seal Washer 3/8		1					
14	9.803-919.0	Banjo Bolt 3/8		1					
15*	8.754-936.0	O-ring, Ø2.62 x 10.78	A	1					
16	9.803-920.0	Banjo Bolt, 1/2, w/1/4" Port		1					

* Included in Kit

Kit A 8.754-941.0 O-Ring Repair Kit
Kit B 8.754-942.0 Outlet Repair Kit
Kit C 8.754-957.0 Stem Repair Kit

LANDA[®]

Form # 8.913-998.0 • Revised 01/23 • Printed in U.S.A. or Mexico