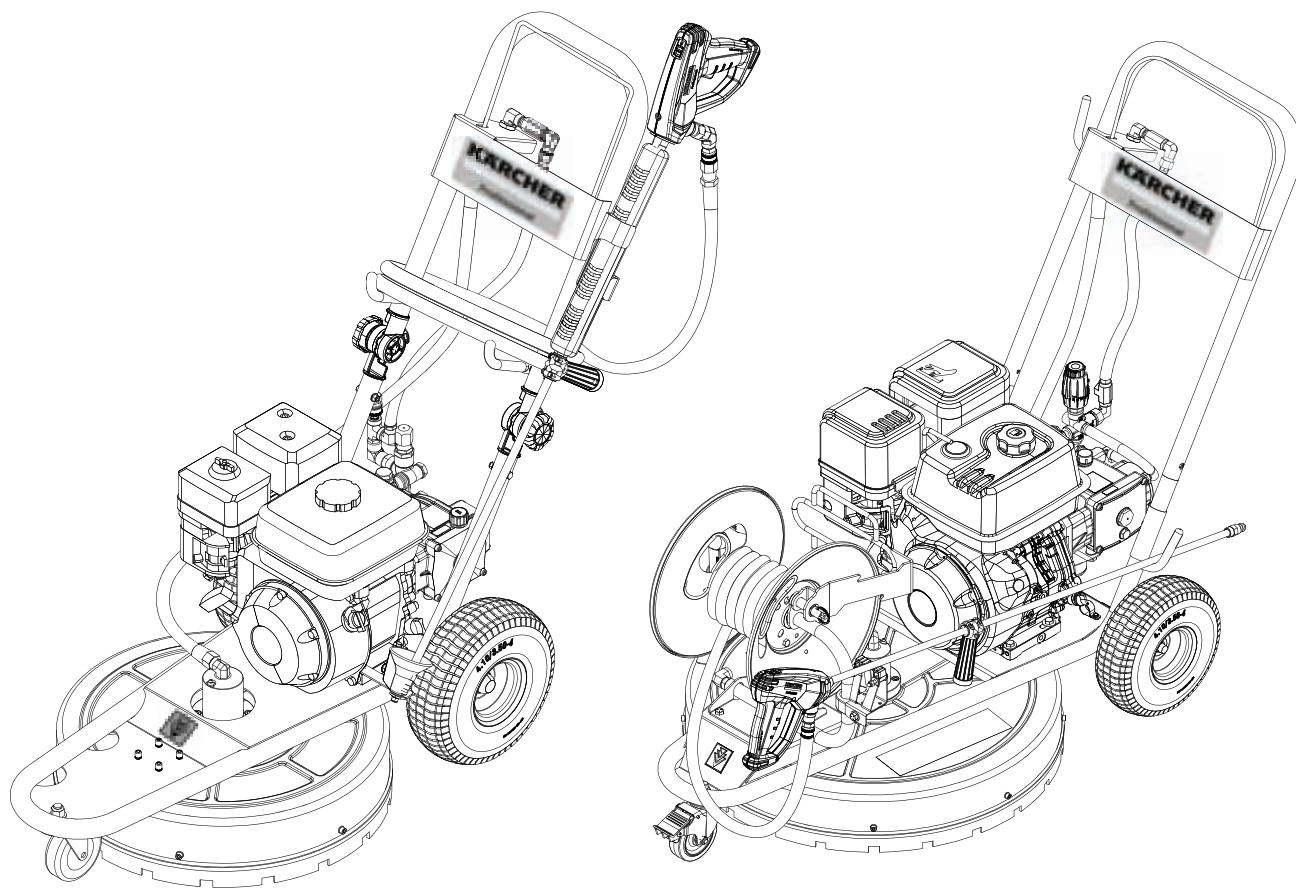


# KÄRCHER

makes a difference

**High Pressure Cleaner**  
**Combustion engine - Cold Water**

English..... 3  
Español....44  
Français....88



## SHOP PRESSURE WASHER PARTS

[shoppressurewasherparts.com](http://shoppressurewasherparts.com) | (888) 269-0172



**Register  
your product**

[www.kaercher.com/welcome](http://www.kaercher.com/welcome)



98028980 - M (01/23)

**MODEL:**

**1.107-380.0**

SCW 2.4/25 G

**1.107-439.0**

SCW 2.4/25 GL

**1.107-437.0**

SCW-4.0/40 GL

---

Introduction .....	4
Important Safety Information .....	4
Component Identification .....	7
General Operating Techniques .....	8
Assembly Instructions .....	9
Operating Instructions .....	9
General Cleaning Techniques .....	10
Shutting Down and Clean-Up .....	11
Storage .....	11
Exploded View .....	12
Exploded View Parts List (SCW 2.4/25 GL) .....	13
Exploded View (SCW-4.0/40 GL) .....	14
Exploded View Parts List (SCW-4.0/40 GL) .....	15
Handle Exploded View and Parts List .....	16
Handle Exploded View and Parts List (SCW-4.0/40 GL) .....	17
Hose And Spray Gun Assembly And Parts List .....	18
Hose Reel Assembly (SCW-4.0/40 GL) .....	19
HOSE REEL ASSEMBLY .....	20
Pump Assembly (SCW-4.0/40 GL) .....	20
Extended Swivel Assembly Exploded View & Part List .....	21
Lifting Points And Instructions .....	22
Pump Assembly (SCW-4.0/40 GL) .....	23
Cover Assembly And Parts List .....	24
Swivel Assembly Exploded And Parts List .....	26
VBT Unloader Exploded View And Parts List .....	27
LPP3035G Pump Exploded View And Parts List .....	28
LS 4040G Pump Exploded View And Parts List .....	30
VRT3 Unloader Exploded View And Part S List .....	32
Engine Black Loncin G210FA Exploded view .....	33
Engine Black Loncin G420 Exploded View .....	34
Filter Exploded View and Parts List .....	36
Cleaning the Water Inlet Filter .....	37
Troubleshooting .....	38
Preventive Maintenance .....	42
Oil Change Record .....	43

Model Number \_\_\_\_\_

Serial Number \_\_\_\_\_

Date of Purchase \_\_\_\_\_

The model and serial numbers will be found on a decal attached to the pressure washer. You should record both serial number and date of purchase and keep in a safe place for future reference.

# INTRODUCTION & IMPORTANT SAFETY INFORMATION

Thank you for purchasing this Pressure Washer.

We reserve the right to make changes at any time without incurring any obligation.

The Surface Cleaner Unit is a pressure washer which causes rotation of two high pressure nozzles which will contain the spray as well as determine the size of the swath when cleaning surfaces such as parking lots, driveways and sidewalks.

It also has an attached spray gun and hose for isolated cleaning areas. The height adjustment knob allows for cleaning variations by easily raising or lowering the rotating pressure spray.

## Owner/User Responsibility:

The owner and/or user must have an understanding of the manufacturer's operating instructions and warnings before using this Surface Cleaner Unit. Warning information should be emphasized and understood. If the operator is not fluent in English, the manufacturer's instructions and warnings shall be read to and discussed with the operator in the operator's native language by the purchaser/owner, making sure that the operator comprehends its contents.

Owner and/or user must study and maintain for future reference the manufacturers' instructions.


## SAVE THESE INSTRUCTIONS

This manual should be considered a permanent part of the machine and should remain with it if machine is resold.

When ordering parts, please specify model and serial number.

## IMPORTANT SAFETY INFORMATION

**CAUTION**



**READ OPERATOR'S MANUAL THOROUGHLY PRIOR TO USE.**

**CAUTION:** *To reduce the risk of injury, read operating instructions carefully before using.*

1. Read the owner's manual thoroughly. Failure to follow instructions could cause malfunction of the machine and result in death, serious bodily injury and/or property damage.

**WARNING:** *High pressure stream of fluid that this equipment can produce can pierce skin and its underlying tissues, leading to serious injury and possible amputation.*

**WARNING**



**HIGH PRESSURE STREAM CAN PIERCE SKIN AND TISSUE**

2. High pressure developed by these machines will cause personal injury or equipment damage. Use caution when operating. Do not direct discharge stream at people or animals or severe injury or death will result.

3. Never make adjustments on machine while it is in operation.

4. Eye safety devices and foot protection must be worn when using this equipment.
5. The best insurance against an accident is precaution and knowledge of the machine.
6. Never point the Surface Cleaner Unit wand at any part of your body or at anyone standing within 10 feet as serious injury could occur.

**WARNING:** *High pressure spray can cause paint chips or other particles to become airborne and fly at high speeds.*

**WARNING**



**USE PROTECTIVE EYE WEAR AND CLOTHING WHEN OPERATING THIS EQUIPMENT.**

7. Safety clothing and protective eye covering must be worn.

8. Surface Cleaner Unit assembly comes equipped with a #3 nozzle in the spray gun and two #2 nozzles in the rotating swivel. Check your machine nozzle size before using.

9. We will not be liable for any alterations made to our standard machines, or the application of any components not purchased from us.

10. Pressure must NOT exceed 2500 PSI. Temperature must NOT exceed 104°F. Flow rate must NOT exceed 2.4 GPM.

11. To protect from freezing, squeeze trigger on spray gun and lower the hose to allow water to drain. Flow rate must NOT exceed 2.4 GPM.

12. Know how to stop the machine and bleed pressure quickly. Be thoroughly familiar with the controls.

13. Stay alert — watch what you are doing.

**WARNING**



**KEEP WATER SPRAY AWAY FROM ELECTRICAL WIRING.**

**WARNING:** *Keep wand, hose, and water spray away from electric wiring or fatal electric shock may result.*

14. All installations must comply with local codes. Contact your electrician, plumber, utility company or the selling distributor for specific details.



# INTRODUCTION & IMPORTANT SAFETY INFORMATION



**WARNING:** This machine exceeds 85 db appropriate ear protection must be worn.

15. Keep operating area clear of all persons.



**WARNING:** Flammable liquids can create fumes which can ignite, causing property damage or severe injury.

**WARNING:** Risk of explosion — Operate only where open flame or torch is permitted.



**WARNING:** Risk of fire — Do not add fuel when the product is operating or still hot.

**WARNING:** Do not use gasoline crankcase draining or oil containing gasoline, solvents or alcohol. Doing so will result in fire and/or explosion.

**WARNING:** Risk of fire — Do not Spray flammable liquids.

**WARNING:** This product contains chemicals known to the state of California to cause cancer and birth defects or other reproductive harm. Operation of this equipment may create sparks that can start fires around dry vegetation. A spark arrestor may be required. The operator should contact: Local fire agencies for laws or regulations relating to fire prevention requirements.

16. Allow engine to cool for 1-2 minutes before refueling. If any fuel is spilled, make sure the area is dry before testing the spark plug or starting the engine. (Fire and/or explosion may occur if this is not done.) Gasoline engines on mobile or portable equipment shall be refueled:
- outdoors;
  - with the engine on the equipment stopped;
  - with no source of ignition within 10 feet of the dispensing point; and

d. with an allowance made for expansion of the fuel should the equipment be exposed to a higher ambient temperature.

In an overfilling situation, additional precautions are necessary to ensure that the situation is handled in a safe manner.

- When in use, do not place machine near flammable objects as the engine is hot.
- Do not store or use gasoline near this machine.



**WARNING:** Risk of injury. Hot surfaces can cause burns. Use only designated gripping areas of spray gun and wand. Do not place hands or feet on non-insulated areas of the pressure washer.

- Transport/Repair with fuel tank EMPTY or with fuel shut-off valve OFF.
- To reduce the risk of injury, close supervision is necessary when a machine is used near children. Do not allow children to operate the pressure washer. **This machine must be attended during operation.**



**WARNING:** Grip cleaning wand securely with both hands before starting. Failure to do this could result in injury from a whipping wand.

- Be certain all quick coupler fittings are secured before using pressure washer.



**WARNING:** Protect machine from freezing.

- To keep machine in best operating conditions, it is important you protect machine from freezing. Failure to protect machine from freezing could cause malfunction of the machine and result in death, serious bodily injury, and/or property damage. Follow storage instructions specified in this manual.
- Inlet water must be clean fresh water and no hotter than 90°F.

# INTRODUCTION & IMPORTANT SAFETY INFORMATION



**WARNING: Risk of asphyxiation.**  
*Use this product only in a well ventilated area.*

24. Avoid installing machines in small areas or near exhaust fans. Adequate oxygen is needed for combustion or dangerous carbon monoxide will result.
25. Manufacturer will not be liable for any changes made to our standard machines or any components not purchased from us.
26. The best insurance against an accident is precaution and knowledge of the machine.
27. Do not allow acids, caustic or abrasive fluids to pass through the pump.
28. Never run pump dry or leave spray gun closed longer than 1-2 minutes.
29. Machines with shut-off spray gun should not be operated with the spray gun in the off position for extensive periods of time as this may cause damage to the pump.
30. Protect discharge hose from vehicle traffic and sharp objects. Inspect condition of high pressure hose before using or bodily injury may result.
31. Before disconnecting discharge hose from water outlet, open the spray gun and trigger bar to relieve pressure.
32. Do not overreach or stand on unstable support. Keep good footing and balance at all times.
33. Do not operate this machine when fatigued or under the influence of alcohol, prescription medications, or drugs.



**Follow the maintenance instructions specified in the manual.**

## GENERAL OPERATING TECHNIQUES

1. Turn on water supply and start pressure washer.
2. Pull the trigger for water to start cleaning surface.  
**NOTE: Never stop moving the Surface Cleaner Unit while trigger is engaged and surface is being sprayed or damage to surface could occur.**
3. For use of the spray gun in isolated cleaning, check the nozzle size. The Surface Cleaner Unit is shipped with a #3 nozzle.

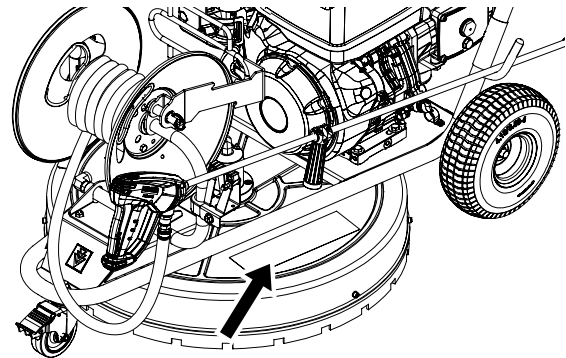
**NOTE: For use of the spray gun, be aware that the Surface Cleaner Unit comes with a #3 nozzle and two #2 nozzles on the rotary swivel.**

## HIGH PRESSURE SWIVEL INFORMATION

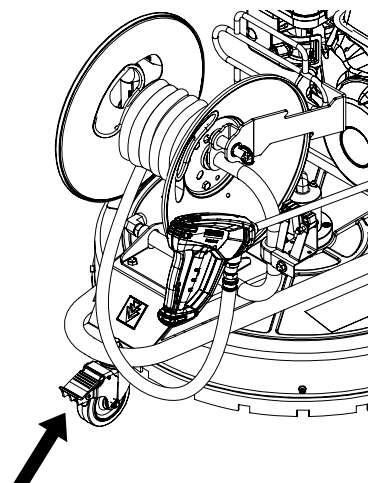
The Surface Cleaner Unit high pressure swivel will “weep” water from underneath the cover. This weeping is normal for this swivel. The swivel uses water to lubricate its floating seal face to keep wear down to a minimum.

Also the high pressure swivel is equipped with a grease fitting and should be greased at least **once every three months**. A good quality ball bearing grease is recommended. **DO NOT OVER GREASE THE BEARING!**

The Warranty for this high pressure swivel is one year from date of purchase.

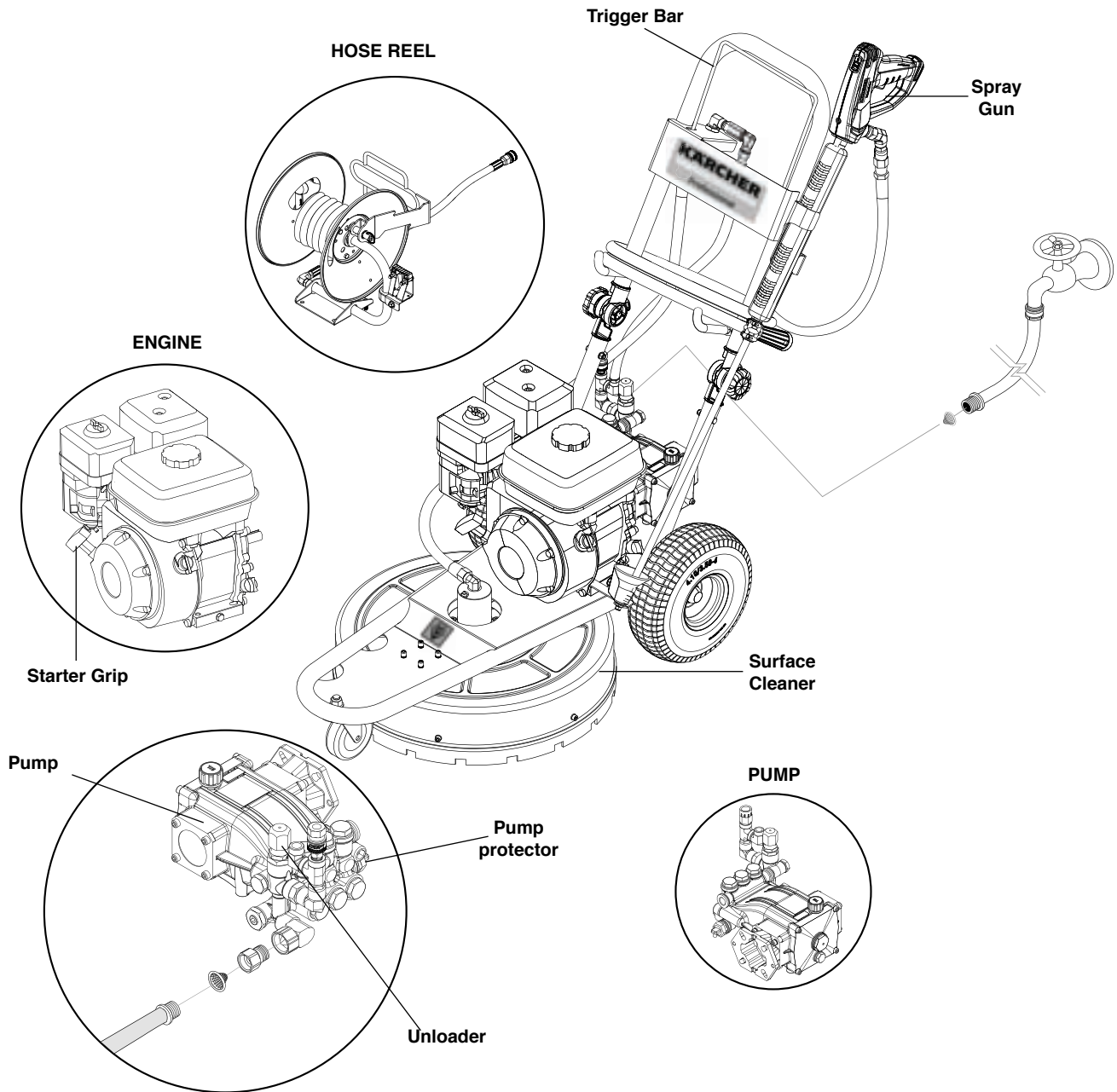


Do not step on this surface.



Turn castor to front in order to active the brake.

# COMPONENT IDENTIFICATION



**Pump** — Develops high pressure.

**Starter Grip** — Used for starting the engine manually.

**Spray Gun** — Controls the application of water and detergent onto cleaning surface with trigger device. Includes safety latch.

**Unloader Valve** — Safety device which allows pressure to be released when spray gun is closed

**Wand** — Must be connected to the spray gun.

**High Pressure Hose** — Connect one end to water pump discharge nipple and the other end to spray gun.

On SCW-4.0/40 GL connect one end to hose reel swivel and the other one to spray gun

**Pump Protector** — Cycles fresh cool water through pump when recirculating water reaches 140°F.

**Trigger Bar** — Controls the application of water in surface cleaner.

**Rotative Surface Cleaner** — Used to application of water onto cleaning surface with trigger bar device.

**Hose Kink Protector** — Must be connected between feed hose and pump, protects to kink in feed hose, reinforced with coil spring, maintains even water flow.

**Note:** If trigger on spray gun is released for more than 1-2 minutes, water will leak from valve. Warm water will discharge from pump protector onto floor. This system prevents internal pump damage.

## GENERAL OPERATING TECHNIQUES

### NOZZLE SELECTION & INSTALLATION

- Your Rotary Surface Cleaner will come installed with one set of 25020 nozzles (25 degree and 2.0 orifice).

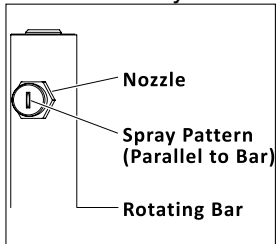


Figure 1

On SCW-4.0/40 GL will come with one set of 25025 nozzles (25 degree and 2.5 orifice)

a. The minimum orifice size to be used in your Rotary Surface Cleaner is half that which is

being used in your pressure washer.

Example: If your pressure washer uses a size 5 orifice, you will need to use a size 2.5 orifice in your Rotary Surface Cleaner.

(Two nozzles are inserted in the Rotary Surface Cleaner, therefore; two nozzles x size 2.5 orifice = size 5 orifice.)

- The nozzles being used should have a 15° - 25° spray pattern; anything less than a 15° spray pattern can damage the area being cleaned. Anything more than 25° may not allow the bar to rotate.
- Nozzles should be screwed into the rotating bar. The spray fan should be parallel to the Rotating Bar. (See figure 1.)

#### SET-UP:

- Locate the high pressure discharge hose on your pressure washer and ensure it is securely connected to the water outlet of the pressure washer. Quick connect the other end of the high pressure discharge hose to the gun on the Rotary Surface Cleaner.
- Connect the water supply hose, one end to your pressure washer, the other end to a pressurized water supply.

- Clear any loose debris from the area to be cleaned.
- Never attempt to clean surface with objects that protrude from the surface being cleaned. Striking any raised obstacle during operation will damage machine. If contact does occur and results in vibration when operating machine, STOP and replace spray bar.

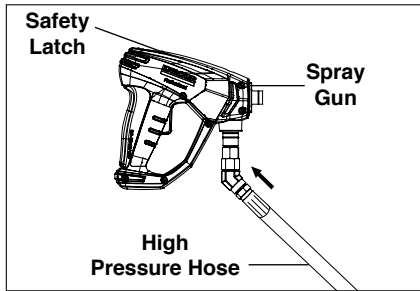
**⚠ CAUTION: Risk of Injury or damage to machine! NEVER OPERATE THE UNIT IF IT BEGINS TO VIBRATE! Shutdown the unit and tighten the rotating bar, bolts and fittings.**

### PRE-START INSPECTION PROCEDURES

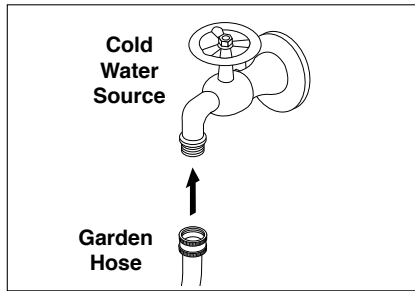
- Inspect Rotary Surface Cleaner before each use.
- Ensure all connections are secure. Turn the water supply completely "ON". (DO NOT START PRESSURE WASHER!)
- Inspect hoses for kinking, cut or leaks. If found, DO NOT USE HOSE!  
Replace damaged hoses before starting.
- Unlock the trigger gun and squeeze the trigger. Water will begin flowing from the nozzles of the Surface Cleaner. Ensure nozzles are not clogged and spray pattern is not erratic. Change nozzles before proceeding if problems exist.
- Be sure that all damaged parts are replaced and that the mechanical problems are corrected prior to operation. If you need service, contact an Authorized Service Center.

### SURFACE PREPARATION

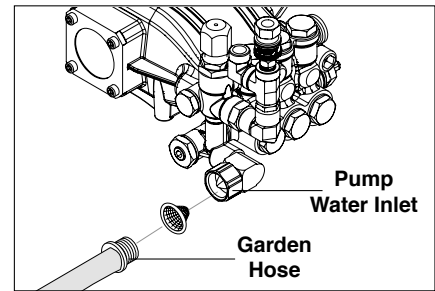
## ASSEMBLY INSTRUCTIONS



**STEP 1:** Attach the high pressure hose to the spray gun using teflon tape on hose threads.

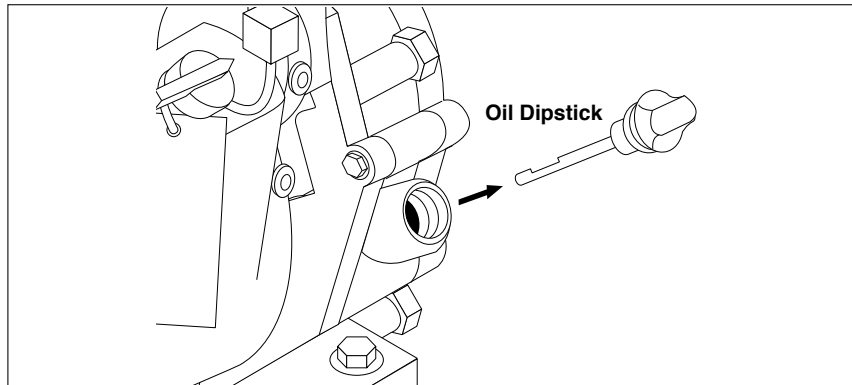


**STEP 2:** Connect garden hose to the cold water source.

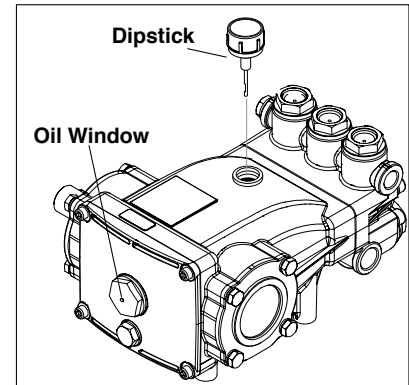


**STEP 3:** Check inlet filters, remove debris, then connect the garden hose to pump water inlet. **CAUTION: Do not run the pump without water or pump damage will result.**

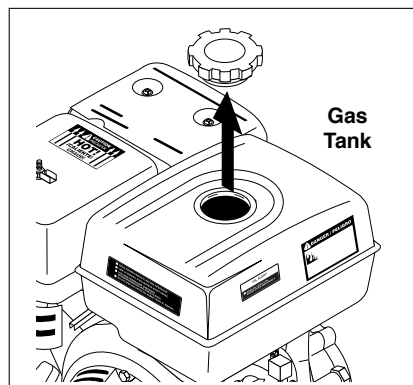
## OPERATING INSTRUCTIONS



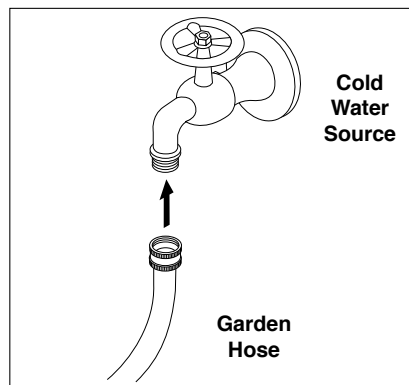
**STEP 1:** Check engine oil level. Oil level should be level with the bottom of the oil filler neck. Be sure the machine is level when checking the oil level. (Refer to the engine's operating manual included with machine). We recommend that the oil be changed after the first month or 20 hours of use, then once every 100 hours or every 6 months after first month. **Note:** Improper oil levels will cause low oil sensor to shut off engine. **IMPORTANT! Do not run engine with high or low oil levels as this will cause engine damage.**



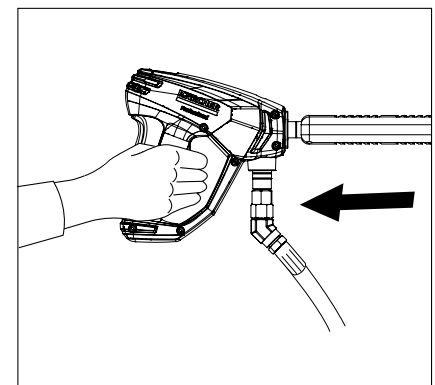
**STEP 2:** Remove shipping cap and install oil dipstick. Check pump oil level by using dipstick or observe oil level in oil window (if equipped). Use SAE 10W-40 non detergent oil.



**STEP 3:** Fill gas tank with unleaded gasoline. Do not use leaded gasoline.



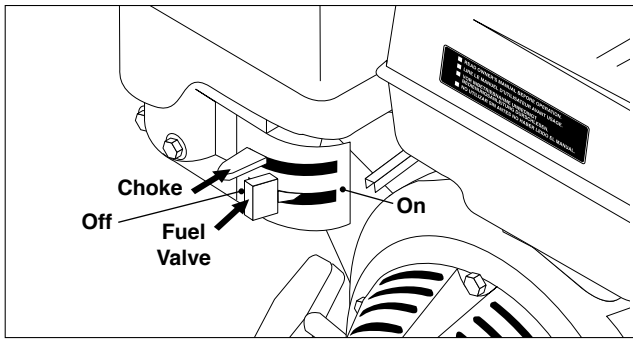
**STEP 4:** Connect garden hose to the cold water source and turn water on completely. Never use hot water.



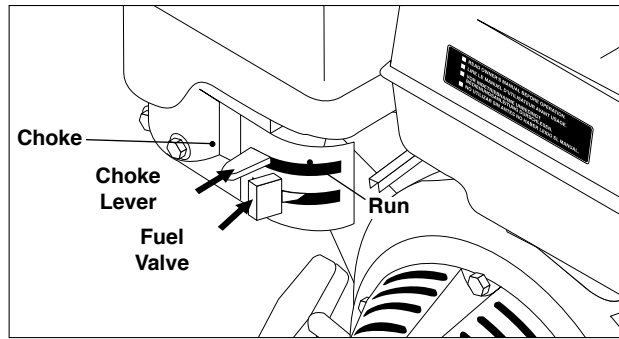
**STEP 5:** Trigger the spray gun to eliminate trapped air then wait for a steady flow of water to emerge from the spray nozzle.



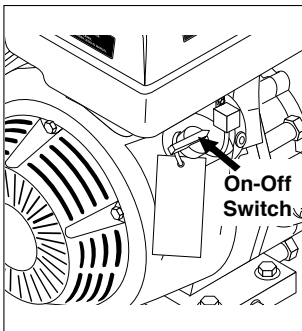
## OPERATING INSTRUCTIONS



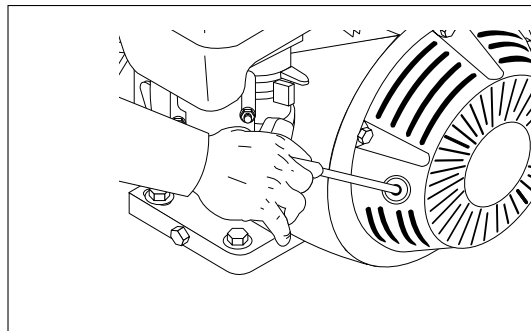
**STEP 6:** Slide the fuel valve lever to the "ON" position. When the engine is not in use, leave the fuel valve in the "OFF" position.



**STEP 7:** Move the choke lever to the "Choke" position (on a warm engine, leave the choke lever in the run position).



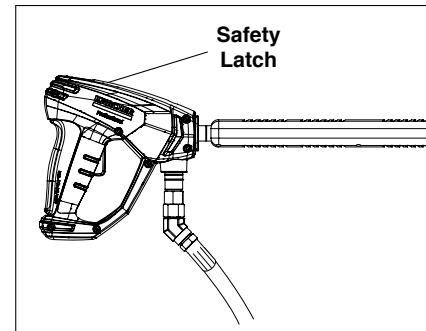
**STEP 8:** Turn the engine switch to "On" position.



**STEP 9:** Pull the starter grip. If the engine fails to start after 2 pulls, squeeze the trigger gun to release pressure and repeat step. Return starter gently. After the engine warms up enough to run smoothly, move choke to run position and throttle to fast position.

**CAUTION:** *Small engines may kick back. Do not hold pull starter grip tightly in hand.*

**ATTENTION:** *Les petits moteurs peuvent présenter un risque de retour.*



**WARNING!** Never replace nozzles without engaging the safety latch on the spray gun trigger.

## GENERAL CLEANING TECHNIQUES

### THERMAL PUMP PROTECTION

If you run the engine on your pressure washer for 1-2 minutes without pressing the trigger on the spray gun, circulating water in the pump can reach high temperatures. When the water reaches this temperature, the pump protector engages and cools the pump by discharging the warm water onto the ground. This thermal device prevents internal damage to the pump.

#### Recommendations:

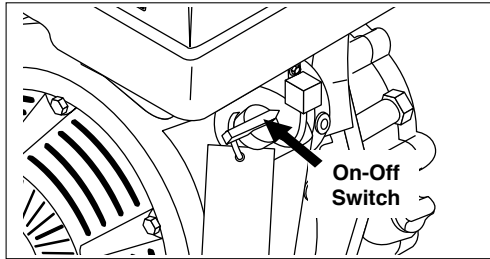
- Before cleaning any surface, an inconspicuous area should be cleaned to test spray pattern and distance for maximum cleaning results.
- If painted surfaces are peeling or chipping, use extreme caution as pressure washer may remove the loose paint from the surface.
- Keep the spray nozzle a safe distance from the surface you plan to clean. High pressure wash a

small area, then check the surface for damage. If no damage is found, continue to pressure washing.

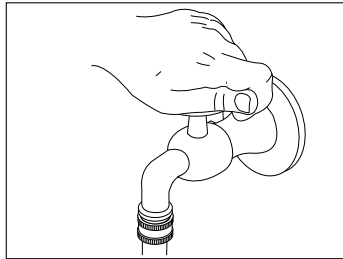
#### CAUTION - Never use:

- Bleach, chlorine products and other corrosive chemicals
- Liquids containing solvents (i.e., paint thinner, gasoline, oils)
- Tri-sodium phosphate products
- Ammonia products or acid-based products

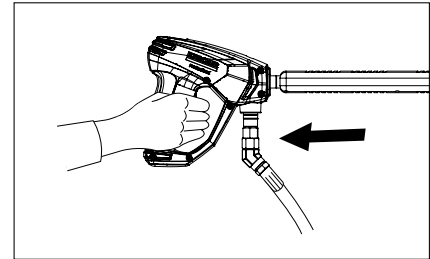
## SHUTTING DOWN AND CLEAN-UP



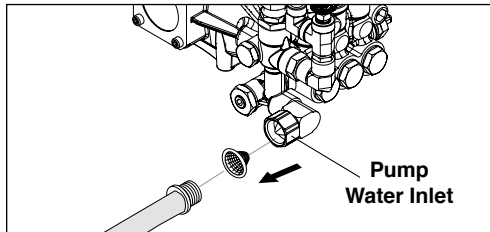
**STEP 1:** Turn off the engine.



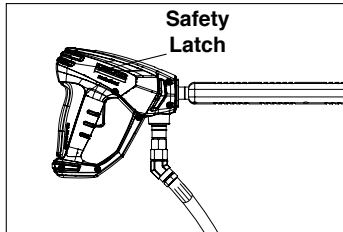
**STEP 2:** Turn off water supply.



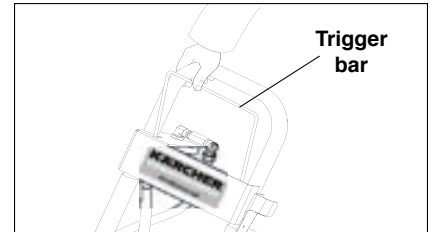
**STEP 3:** Press trigger to release water pressure.



**STEP 4:** Disconnect the garden hose from the water inlet on the machine.



**STEP 5:** Engage the spray gun safety lock.



**STEP 6:** Pull trigger bar to drain water from surface cleaner swivel and spray arm.

## STORAGE

**CAUTION:** Always store your pressure washer in a location where the temperature will not fall below 32°F (0°C). The pump in this machine is susceptible to permanent damage if frozen. **FREEZE DAMAGE IS NOT COVERED BY WARRANTY.**

1. Stop the pressure washer, squeeze spray gun trigger to release pressure.
2. Detach water supply hose and high pressure hose.
3. Turn on the machine for a few seconds, until remaining water exits. Turn engine off immediately.
4. Drain the gas and oil from the engine.
5. Do not allow high pressure hose to become kinked.
6. Store the machine and accessories in a room which does not reach freezing temperatures.

**CAUTION:** Failure to follow the above directions will result in damage to your pressure washer.

When the pressure washer is not being operated or is being stored for more than one month, follow these instructions:

1. Replenish engine oil to upper level.
2. Drain gasoline from fuel tank, fuel line, fuel valve and carburetor.
3. Pour about one teaspoon of engine oil through the spark plug hole, pull the starter grip several times and replace the plug. Then pull the starter grip slowly until you feel increased pressure which indicates the piston is on its compression stroke and leave it in that position. This closes both the intake and exhaust valves to prevent rusting of cylinder.
4. Cover pressure washer and store in a clean, dry place that is well ventilated away from open flame

or sparks. **NOTE:** The use of a fuel additive, such as STA-BIL®, or an equivalent, will minimize the formulation of fuel deposits during shortage. Such additives may be added to the gasoline in the fuel tank of the engine, or to gasoline in a storage container.



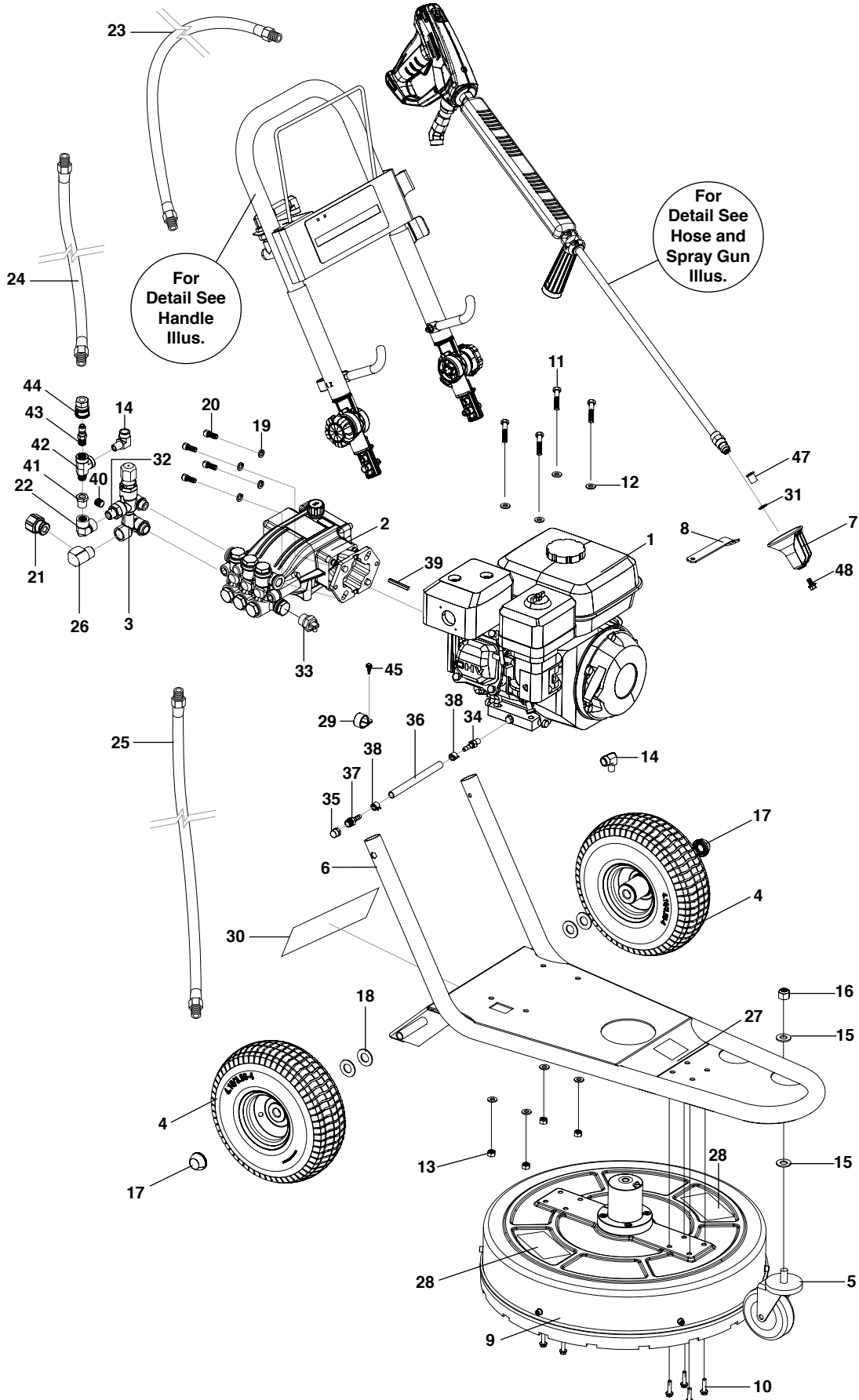
### After Extended Storage

**CAUTION:** Prior to restarting, thaw out any possible ice from pressure washer hoses, spray gun or wand.

### Engine Maintenance

During the winter months, rare atmospheric conditions may develop which will cause an icing condition in the carburetor. If this develops, the engine may run rough, lose power and may stall. This temporary condition can be overcome by deflecting some of the hot air from the engine over the carburetor area. **NOTE:** Refer to the engine manufacturer's manual for service and maintenance of the engine.

# EXPLODED VIEW SCW 2.4/25 G & SCW 2.4/25 GL

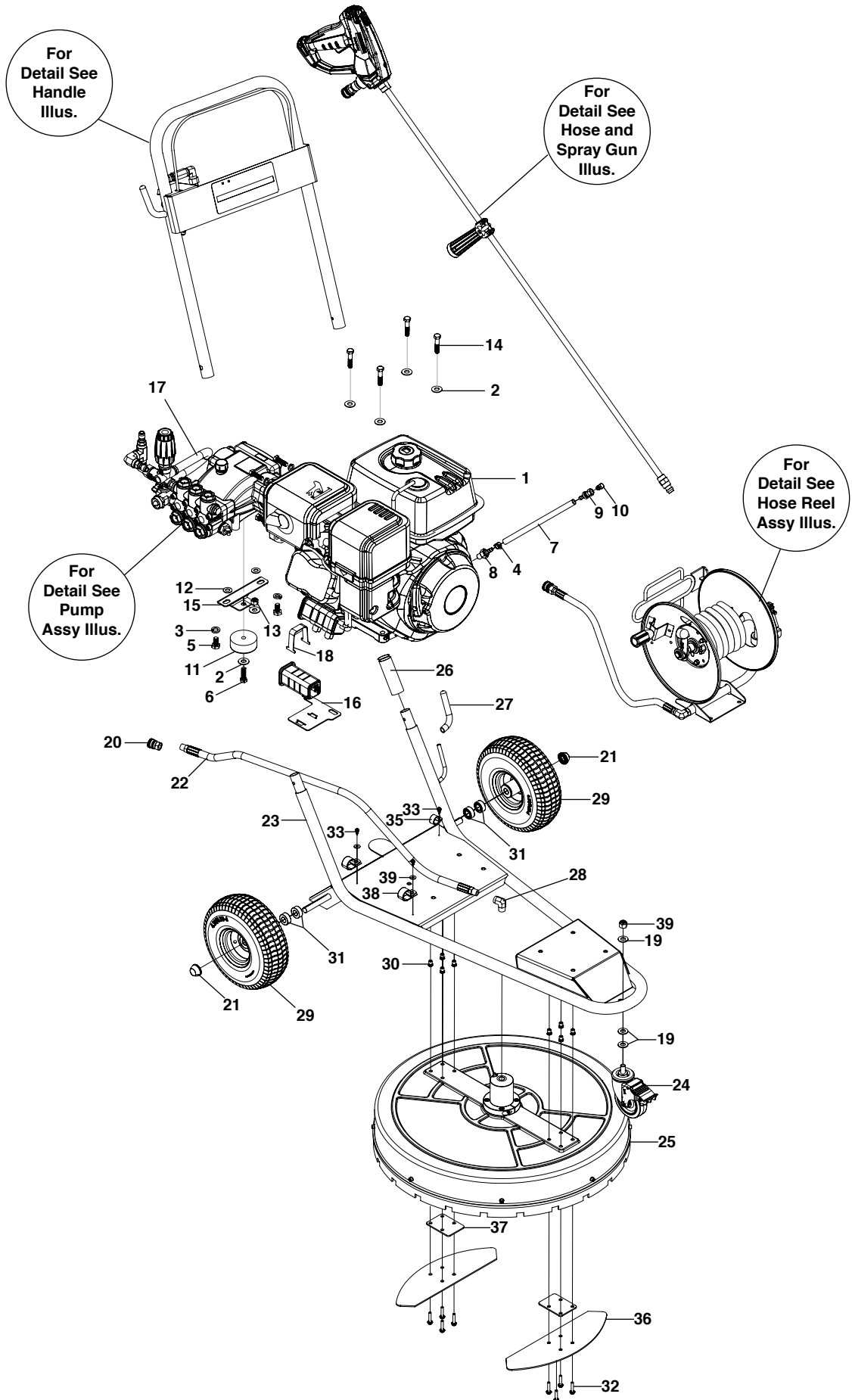




**EXPLODED VIEW PARTS LIST SCW 2.4/25 G & SCW 2.4/25 GL**

ITEM	PART NO.	DESCRIPTION	QTY
1	9.802-317.0	Engine, Honda, GX200UT2QX2	1
	8.758-221.0	Gasoline engine Black Loncin G210FA (SCW 2.4 / 25 GL)	1
2	8.929-258.0	Pump KARCHER KPP2535G, 2.5@3500, 3400RPM	1
3	8.754-696.0	Unloader, VBT Banjo 1/2M 3/8M, 3000PSI	1
4	8.756-365.0	QH Wheel Assy 10",gray STL RIM, Flat	2
5	8.749-545.0	Caster,4"X1.25,1/2-13&TM,W/O Lock	1
6	8.925-431.0	Base, Surface Cleaner_Painted	1
7	8.750-844.0	Holder, Wand	1
8	8.925-437.0	Wand Holder Bracket, Painted	1
9	8.757-180.0	Shroud Assy, 21" Surface Cleaner	1
10	8.750-768.0	Screw, 1/4-20 x 1", Whiz Loc Flange	8
11	9.802-713.0	Bolt, 5/16" x 1-1/2", NC HH(612975)	4
12	8.718-980.0	Washer, 5/16" flat, SAE (780452)	8
13	9.802-776.0	Nut, 5/16-18, ESNA	4
14	8.706-200.0	Elbow, 1/4" Street-P/N-TF3409X4	2
15	9.802-809.0	Washer, 1/2" Flat SAE	2
16	8.718-829.0	Nut, 1/2", ESNA	1
17	9.182-506.0	Cap Black Plastic,5/8"Fastener	2
18	9.802-810.0	Washer 5/8"	4
19	9.802-813.0	Washer, 5/16" Split Ring Lock, Zinc	4
20	8.733-007.0	Socket Head 5/16-24 X 3/4 Zinc Plated	4
21	9.802-146.0	Swivel, 1/2" MP X 3/4" GHF W/Strainer	1
22	8.706-167.0	Elbow, 3/8" FPT, 90 DGR, P/N-TF3509X6	1
23	8.925-467.0	Hose,1/4" X 10",R2, Pressure LO	1
24	8.925-466.0	Hose,1/4" X 26",R2, Pressure LO	1
25	8.918-187.0	Hose,1/4" X 42", 2 Wire, Guage Hose	1
26	8.706-829.0	Elbow, 1/2" Street, Brass	1
27	8.757-353.0	Label, Karcher Signet	1
28	8.900-222.0	Label, Waterjet Warning	1
29	8.709-090.0	Clamp, Wire/Tube, 0.750D	1
30	8.757-403.0	Label, Warning Trilingual	1
31	9.802-802.0	Washer, 1/4" Flat SAE Zinc	
32	8.706-865.0	Plug, 1/4" NPT COUNTERSUNK	1
33	8.707-256.0	Pump Protector,1/2" PTP,140DEG,P/N 1005	1
34	8.757-499.0	Hose Barb 10-1.25 X 1/4" Pipe	1
35	8.706-321.0	Cap, Pipe, 1/8"NPT Brass	1
36	9.802-254.0	Hose, 1/4" Push-ON, /FT	0.500
37	8.706-940.0	Hose Barb, 1/4" Barb X 1/8" ML PIPE"	1
38	6.390-126.0	Clamp Hose	2
39	9.802-958.0	Key, 0.185 SQR X 1.75'	1
40	8.706-865.0	Plug, 1/4" NPT Countersunk	1
41	8.706-297.0	Bushing, 3/8" x 1/4" Steel Yellow Chrom	1
42	8.706-233.0	Tee, 1/4" Street, Steel	1
43	8.707-139.0	Coupler, 1/4"Plug, Male, Steel/Zinc	1
44	9.802-164.0	Coupler, 1/4" Socket, Female, Brass	1
45	8.718-941.0	Screw, 10-16 X 5/8 TEK	1
47	8.600-562.0	Nut, 1/4-20 Well	1
48	9.802-754.0	Screw, 1/4" x 1/2" NC, Whiz LOC Flange	1

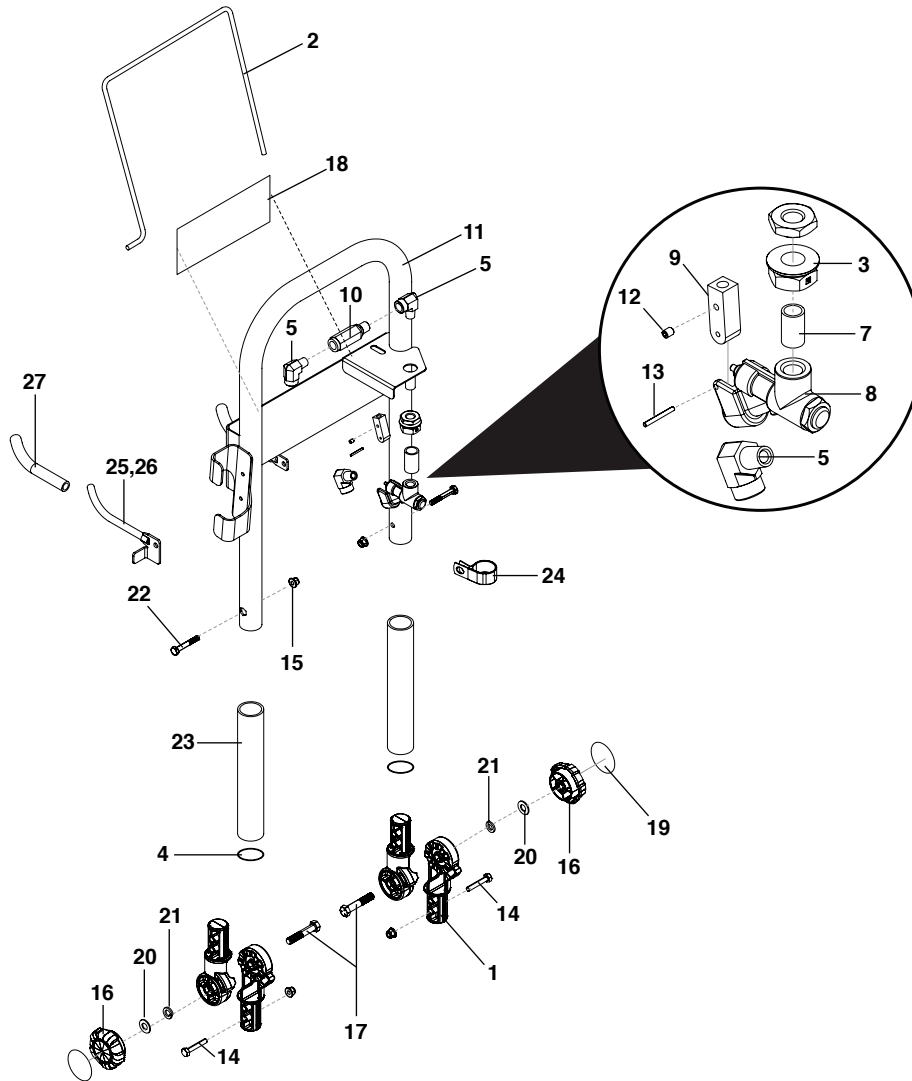
# EXPLODED VIEW (SCW-4.0/40 GL)



## EXPLODED VIEW PARTS LIST (SCW-4.0/40 GL)

ITEM	PART NO.	DESCRIPTION	QTY
1	8.758-208.0	Gasoline Engine Black Loncin G420FA	1
2	9.802-817.0	Washer, 3/8" X 1"	6
3	9.802-816.0	Washer, 7/16", Split Ring Lock, 780481	2
4	6.390-126.0	Clamp Hose	1
5	9.802-744.0	Bolt, 10mm X 20mm, Hh Zinc	2
6	9.802-722.0	Bolt, 3/8 X 1-1/4", Nc Hh	5
7	9.802-254.0	Hose, 1/4" Push-On, /Ft	9"
8	9.802-154.0	Plug, Push-On,Oil Drain, Honda	1
9	9.802-153.0	Swivel, 1/4" Jic Fem, Push-On	1
10	9.802-125.0	Plug, 1/4" Jic	1
11	9.802-066.0	Pad Soft Rubber	1
12	9.198-004.0	3/8 Uss F/W Zinc	2
13	9.197-003.0	3/8-16 Ne Nylon Insert L/N Zc 5um White	1
14	9.196-041.0	Hex Head Bolt 3/8-16 X 1-3/4	4
15	8.930-003.0	Pump Support Jarvis 2.0 Painted	1
16	8.930-001.0	Canister Holder Jarvis 2.0 Painted	1
17	8.929-851.0	Pump Assembly Surface Cleaner 2.0	1
18	8.929-359.0	Bracket Clamp	1
19	9.802-809.0	Washer, 1/2" Flat Sae	3
20	9.802-164.0	Coupler, 1/4"Socket, Female, Brass	1
21	9.182-506.0	Cap Black Plastic,5/8"Fastener	2
22	8.929-859.0	Hose 1/4"X 45.250" 2WIRE 6000PSI	1
23	8.929-838.0	Frame Surface Cleaner 2.0 painted	1
24	8.759-392.0	Ball Caster 4"X1.25 1/2-13UNC With Lock	1
25	8.759-391.0	Surface Cleaner 28"	1
26	8.757-802.0	Grip bar 1.25"x 7.00" Vynil	1
27	8.757-776.0	Hose Hanger Cap 3/8"x 5 1/2"	1
28	8.757-339.0	Elbow, 1/4" Street 90 Deg, Steel W/Slnt	2
29	8.756-365.0	Qh Wheel Assy 10",Gray Stl Rim, Flat	2
30	8.755-010.0	Rivnut, Rib Flg Hd, 1/4"-20	8
31	8.751-374.0	Spacer 5/8 X 1,25 Black	4
32	9.802-752.0	Screw, 1/4" X 1-1/4", Whiz Loc Flange	8
33	8.718-941.0	Screw, 10-16 X 5/8 Tek	1
34	8.718-829.0	Nut, 1/2", Esna	1
35	8.709-090.0	Clamp, Wire/Tube, 0.750D	1
36	8.930-854.0	Reinforcing Plate surface cleaner	2
37	8.930-855.0	Reinforcing Plate bottom surface cleaner	2
38	8.750-776.0	Clip, 1.000 ID RND	2
39	9.802-802.0	Washer, 1/4" Flat Sae Zinc	2

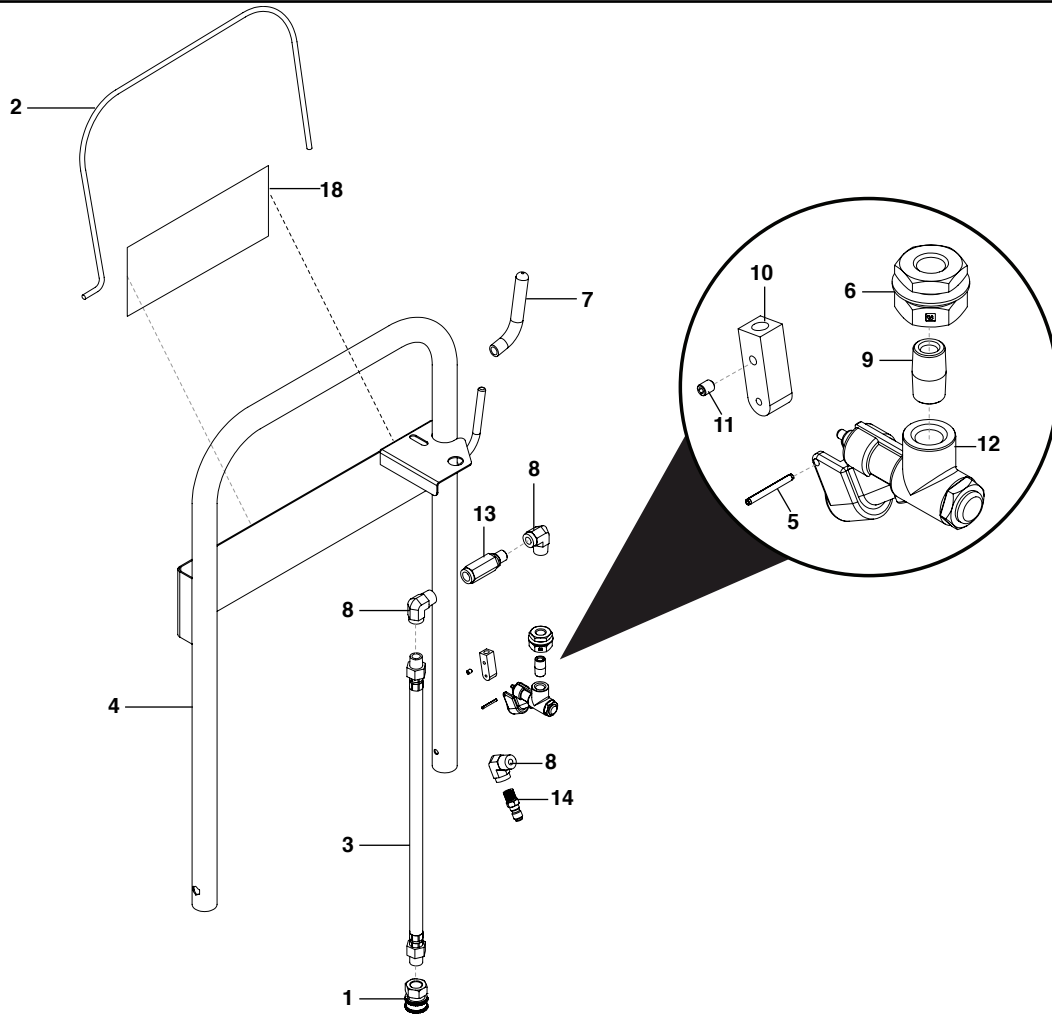
## HANDLE ASSEMBLY EXPLODED VIEW



## HANDLE ASSEMBLY PARTS LIST

ITEM	PART NO.	DESCRIPTION	QTY	ITEM	PART NO.	DESCRIPTION	QTY
1	9.135-007.0	Rotary Tube-Joint	4	15	9.197-010.0	1/4-20" Nylon Insert Lock Nut With Flange	4
2	8.931-483.0	Bar, Trigger, Yellow	1	16	9.136-502.0	Knob	2
3	8.759-557.0	Bulkhead connector steel 1/4"	1	17	9.802-728.0	Bolt, 3/8-16 x 2", HH Zinc	2
4	9.802-510.0	Cable, Tie, 4" Black	2	18	8.757-390.0	Label logo Professional Kärcher	1
5	8.706-200.0	Elbow, 1/4" Street-P/N-TF3409X4	3	19	8.757-421.0	Label, Circle Yellow, Knob	2
6	9.802-031.0	Elbow, Street, 1/4", 45 Degree	1	20	9.198-004.0	3/8 USS F/W Zinc	2
7	8.705-969.0	Nipple, 1/4" Close SCH 80 Steel	1	21	9.802-814.0	Washer, 3/8" Split Ring Lock, Zinc	2
8	8.718-244.0	Valve, Actuator Assembly	1	22	8.751-805.0	1/4-20 x 1-3/4 GR 5 Hex Bolt Zinc	2
9	8.719-966.0	Adapter, Valve, Trigger Bar	1	23	8.757-802.0	Grip 1.25"x 7" Vynil	2
10	8.709-175.0	Filter, High Pressure 1/4"NPT-Fx1/4"NP	1	24	8.623-341.0	Clamp, 3/4 DIA Cushion .406 DIA	1
11	8.925-422.0	Handle, Surface Cleaner	1	25	8.929-116.0	Hose hook left paint Surface Cleaner	1
12	8.718-951.0	Screw, 10/32" x 1/4" SS	1	26	8.929-721.0	Hose hook right paint Surface Cleaner	1
13	8.759-559.0	Spring Pin 3/32" x 1.0"	1	27	8.757-776.0	Hose Hanger Cap 3/8"x 5 1/2"	2
14	9.196-307.0	1/4-20 x 1-1/2 GR 2 Hex Bolt Zinc	2				

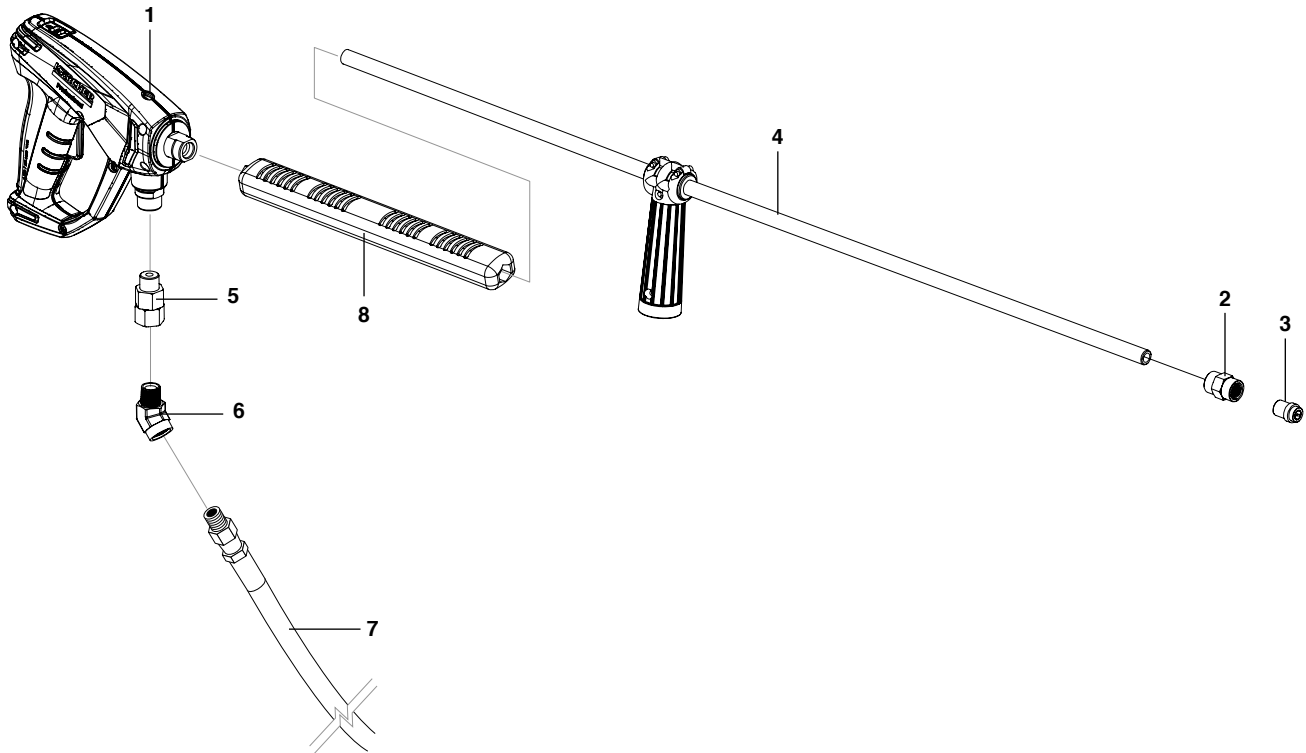
# HANDLE ASSEMBLY EXPLODED VIEW (SCW-4.0/40 GL)



## HANDLE ASSEMBLY PARTS LIST (SCW-4.0/40 GL)

ITEM	PART NO.	DESCRIPTION	QTY	ITEM	PART NO.	DESCRIPTION	QTY
1	9.802-166.0	Coupler, 3/8"Socket, Female, Brass	1	12	8.718-244.0	Valve, Actuator Assembly	1
2	8.930-005.0	Trigger Bar Yellow Jarvis 2.0 Painted	1	13	8.709-175.0	Filter, High Pressure	1
3	8.929-858.0	Hose 1/4"X15.250" 2wire 6000psi	1	14	8.707-140.0	Nipple, 1/4", Male, Ssteel	1
4	8.929-832.0	Handle Surface Cleaner 2.0 Painted	1	15	8.757-390.0	Label logo Professional Kärcher	1
5	8.759-559.0	Spring Pin 3/32" X 1.0"	1				
6	8.759-557.0	Bulkhead Connector Steel 1/4"	1				
7	8.757-776.0	Hose Hanger Cap 3/8"X 5 1/2"	1				
8	8.757-339.0	Elbow, 1/4" Street 90 Deg, Steel W/Slnt	3				
9	8.757-337.0	Nipple, 1/4" Close Sch 80 Steel, W/Slnt	1				
10	8.719-966.0	Adapter, Valve, Trigger Bar	1				
11	8.718-951.0	Screw, 10-32" X 1/4", Soc Set, Ss	1				

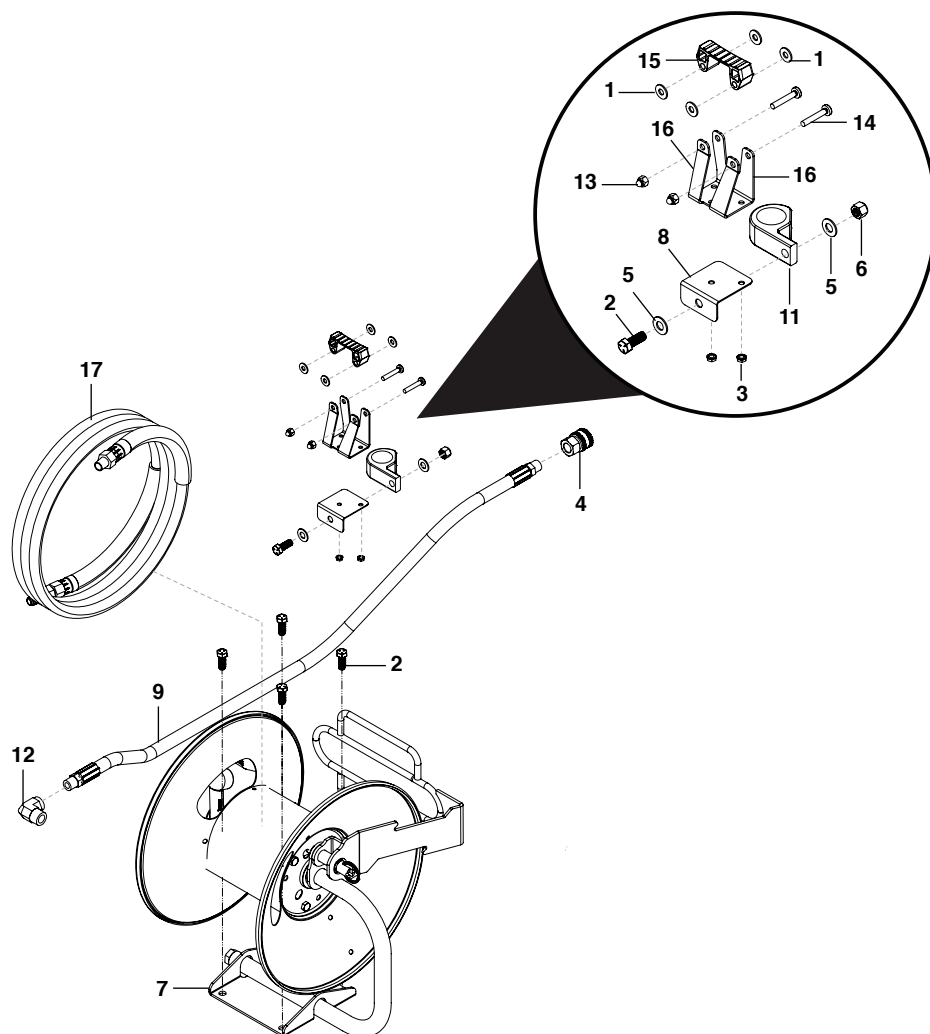
## HOSE AND SPRAY GUN ASSEMBLY



### HOSE AND SPRAY GUN ASSEMBLY PARTS LIST

ITEM	PART NO.	DESCRIPTION	QTY
1	4.775-054.0	EASY Force Advanced KNA	1
2	8.705-364.0	Hex Coupling, 1/4" x 1/4" FPT/ 6000PSI	1
3	8.711-370.0	Nozzle Only, SA 1/4, MEG-1503	1
	8.708-582.0	NOZZLE SS 1/4' #4.0X25 M-STYLE (Only SCW-4.0/40 GL)	1
4	9.802-214.0	Wand,ADJ Side Grip,35.5',HTSY DD(93670)	1
	8.759-393.0	Lance 44" (Only SCW-4.0/40 GL)	1
5	8.712-446.0	Swivel 3/8" MPTxFPT Stainless	1
	8.758-198.0	Coupler 3/8" Socket, Male, Brass w/sInt (Only SCW-4.0/40 GL)	1
6	9.802-041.0	Elbow, 3/8" Street, 45° DGR, Steel (Only SCW 2.4/25 G)	1
7	8.925-467.0	Hose, 1/4" x 60", R2, Pressure LO	1
	8.930-667.0	HOSE, 3/8" X 50' 1W 4000PSI SW X SO_Coupler Fem (Only SCW-4.0/40 GL)	1
8	8.710-717.0	Lance Grip Vented (SCW 2.4/25 G, SCW 2.4/25 GL)	1

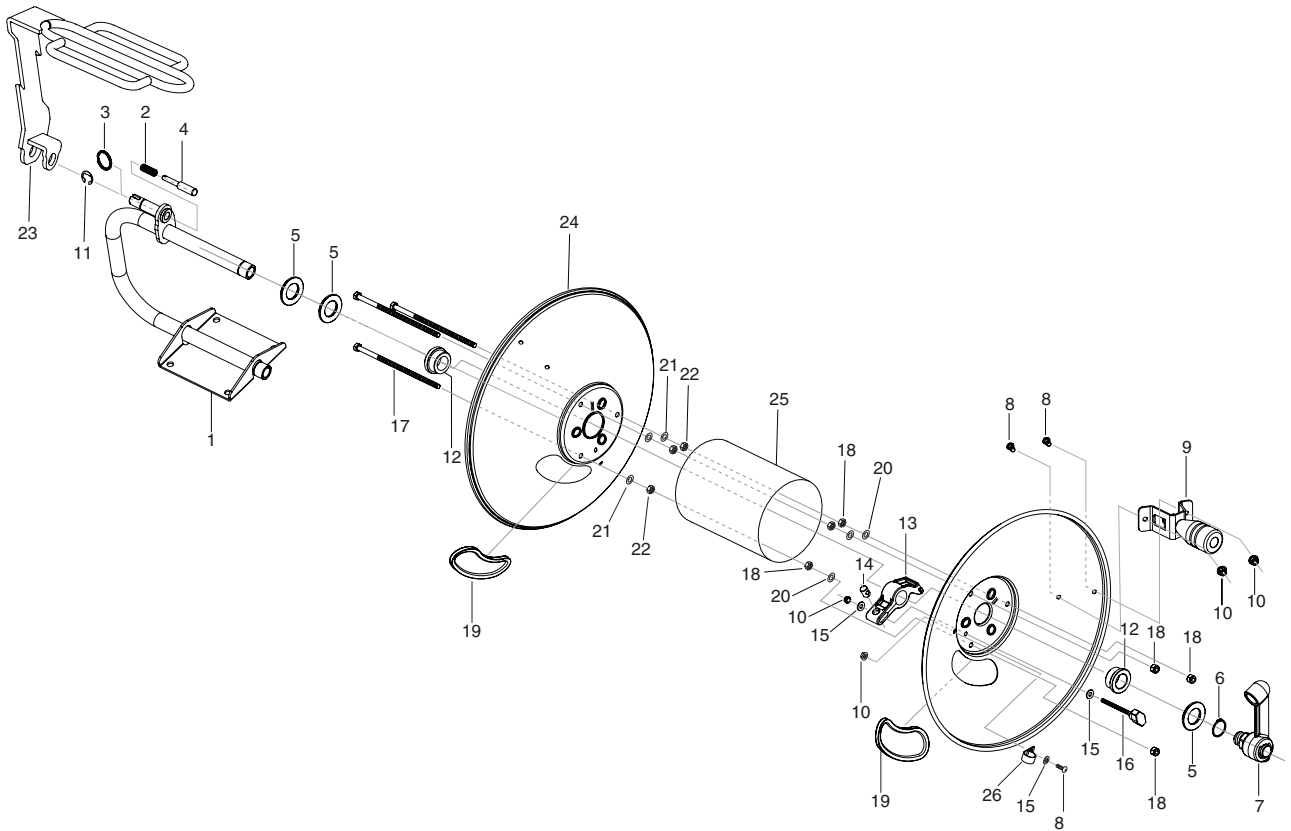
# HOSE REEL ASSEMBLY (SCW-4.0/40 GL)



## HOSE REEL PARTS LIST (SCW-4.0/40 GL)

ITEM	PART NO.	DESCRIPTION	QTY
1	9.802-802.0	Washer, 1/4" Flat Sae Zinc	4
2	9.802-720.0	Bolt, 3/8" X 1", Nc Hh	5
3	9.802-695.0	Nut, 10/32" Keps	2
4	9.802-167.0	Coupler, 3/8" Socket, Female/11,000 Psi	1
5	9.198-004.0	3/8 Uss F/W Zinc	2
6	9.197-003.0	3/8-16 Ne Nylon Insert L/N Zc 5um White	1
7	8.930-761.0	Hose Reel Base100ft Jarvis 2.0	1
8	8.930-006.0	Lance Bracket	1
9	8.929-860.0	Hose 1/4"x40.25" 2Wire 6000PSI	1
10	8.759-577.0	Screw 10-32" X 7/16" Bhsoc Ss	2
11	8.759-540.0	Bar Clamp	1
12	8.757-340.0	Elbow 3/8", Street 90 Deg, Steel, W/SInt	1
13	7.311-622.0	Cap Nut M 6-A2 Din 986	2
14	7.306-197.0	Screw M6x35 -A2-70 (In6rd)	2
15	5.424-162.0	Fixing Jet Pipe	1
16	5.055-684.0	Holder Jet Pipe Fixing	1
17	8.930-667.0	Hose Assembly 3/8" x 50' 1W 4000PSI Coup	1

# HOSE REEL ASSEMBLY

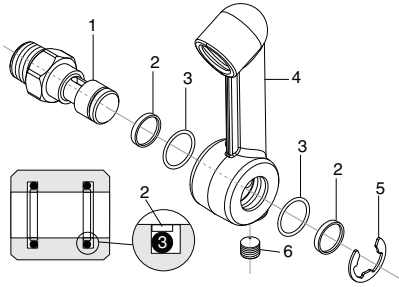


## HOSE REEL PARTS LIST

ITEM	PART NO.	DESCRIPTION	KIT	QTY	ITEM	PART NO.	DESCRIPTION	QTY
1	9.116-009.0	Fixed base 100 ft		1	18	9.802-776.0	Nylock nut 5/16"	6
2		Spring	A	1	19	8.706-577.0	Trim, Edge Guard, Black	2
3		Ring	A	1	20	8.718-980.0	Washer 5/16" Flat	3
4		Pin	A	1	21	9.802-813.0	Washer 5/16" Split Ring Lock, Zinc	3
<b>9.139-374.0 Kit A - Lock Pin Spare Part Kit HR</b>					22	9.802-786.0	Nut 5/16", Hex, NC	3
5	9.198-017.0	Flat Washer 1.0 ID X 2.00 OD 3			23	9.116-010.0	Hose Guide 100 ft	1
6	9.182-005.0	Retaining Ring 1.0 Shaft 1			24	9.116-013.0	Plate 100 ft	2
7	8.776-010.0	Extended Swivel Assembly (see next page)		1	25	9.116-011.0	Drum 100 ft	1
8	9.196-059.0	Button Head Screw, SS 1/4"-20x1/2"		3	26	8.750-776.0	Clip, 1.000 ID RND	1
9	9.121-043.0	Handle Assembly		1				
10	9.197-010.0	Nylock Flange Nut 1/4"-20		4				
11	9.182-007.0	"E" Clip retaining ring		1				
12	9.134-141.0	Drum Bushing 1.0 ID		2				
13	9.134-139.0	Plastic Tension Adjuster		1				
14	9.152-021.0	Threaded Barrel		1				
15	9.802-802.0	Washer Flat 1/4"		3				
16	9.134-140.0	Tension Adjuster Knob		1				
17	9.196-056.0	Screw 5/16" x 6.0", Hex Head, Zinc Plated (100 Ft)		3				

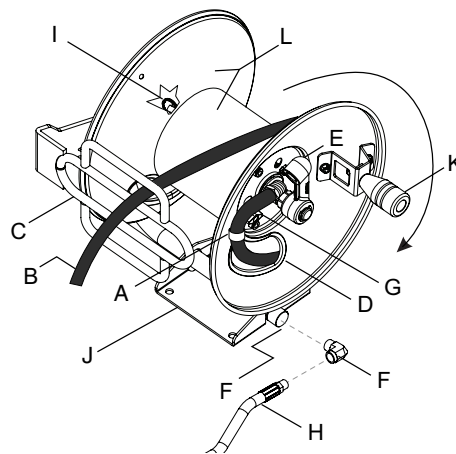


## EXTENDED SWIVEL ASSEMBLY EXPLODED VIEW & PART LIST



ITEM	PART NO.	DESCRIPTION	KIT	QTY
1		Swivel Shaft Male 1/2" NPT	C	1
2		PTFE SEAL	B,C	2
3		O'Ring A-019	B,C	2
4		Extended Swivel Machined	C	1
5		"E" Clip Retaining Ring	B,C	1
6		Plug 1/8" Countersunk	C	1
		8.776-001.0 Kit B-Swivel Repair Kit		
		8.776-010.0 Kit C-Swivel Complete Replacement Kit		

## COMPONENT IDENTIFICATION AND INSTRUCTIONS



- A. Clip
- B. H. P. Hose
- C. Hose guide (except models "No Guide")
- D. Pass hole
- E. Swivel
- F. Bushing reductor
- G. Tension knob
- H. Pump hose
- I. Lock pin for reel
- J. Fixed base
- K. Handle
- L. Reel

### INSTALLATION INSTRUCTION

Hose installed in factory, to replace hoses follow procedures given under "Connecting hoses"

### CONNECTING HOSES

**WARNING:** Before operation make sure that pressure system does not exceed maximum working pressure rating of reel.

**NOTE:** Pipe thread sealant is required to be applied on all threads.

1. Route H. P. Hose (B) through hose guide (C) and pass hole (D).
2. Open Clip (A) and pass the H. P. Hose (B) through it.
3. Before to coil the hose make sure to relief pressure in gun and turn off engine.
4. Connect H. P. Hose (B) to Swivel (E) tighten securely.

5. Tighten Clip (M) to Reel (L).

6. Extend hose and wind onto reel (L) turning the handle (K) with the lock pin (I) unlocked, lock reel (L) when not used.

### ADJUSTMENTS REEL TENSION

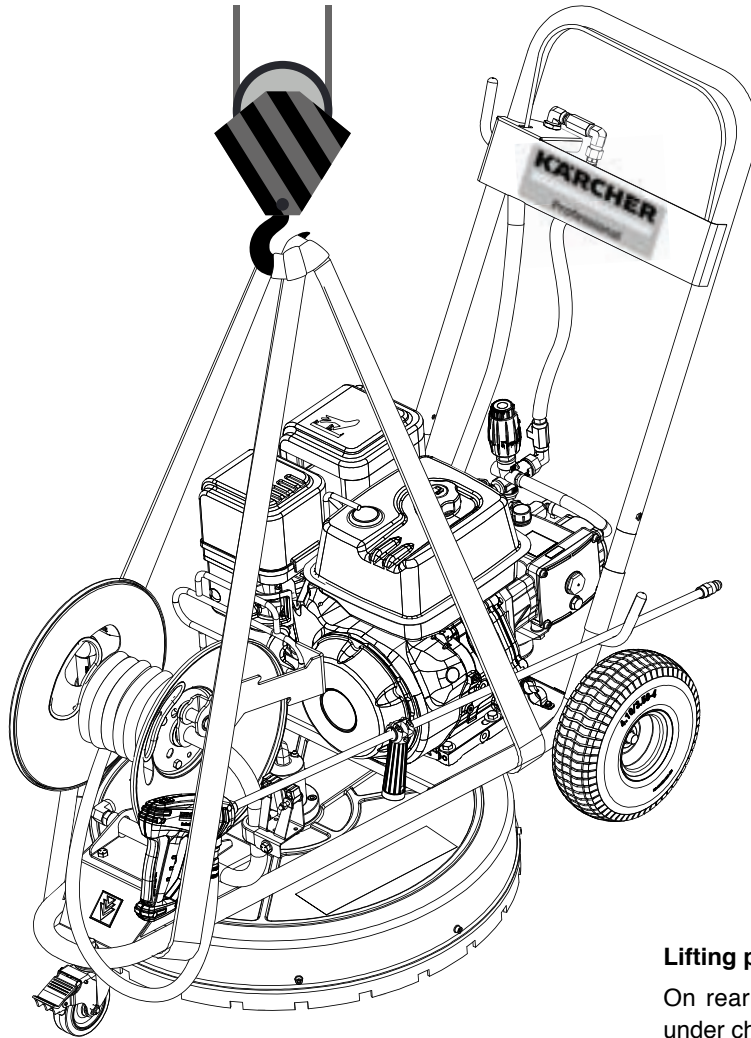
Adjust reel tension by tightening or loosening plastic knob (G).

### SERVICE INSTRUCTIONS

For hose reel maintenance and to prevent personal injury and/or equipment damage and avoiding the warranty, please refer only to an authorized service distributor.

## LIFTING POINTS AND INSTRUCTIONS

To lift the machine make sure to use adequate equipment and hold it in lifting points suggested.

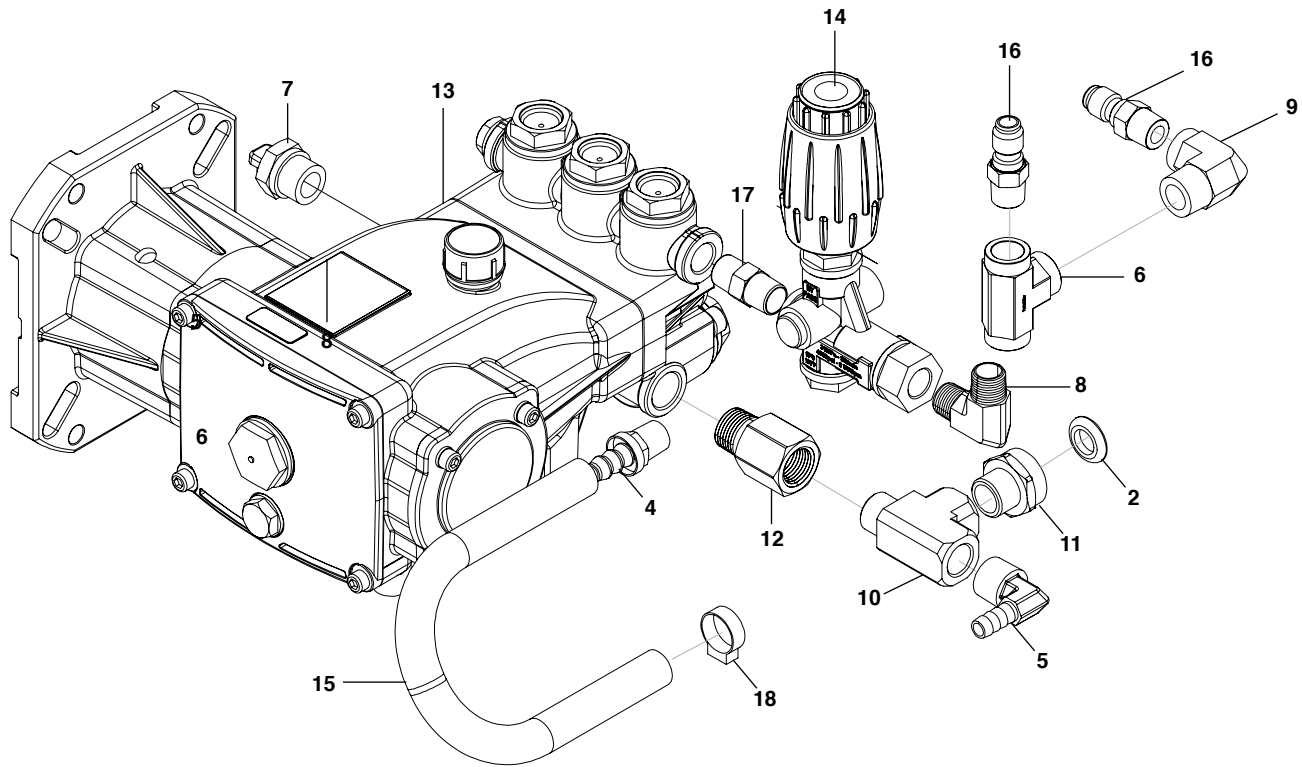
**Lifting points:**

In front side the machine must be hold with lifting slings under chassis between caster and surface cleaner deck as shown.

**Lifting points:**

On rear side hold it with lifting slings under chassis between surface cleaner deck and wheels.

# PUMP ASSEMBLY (SCW-4.0/40 GL)

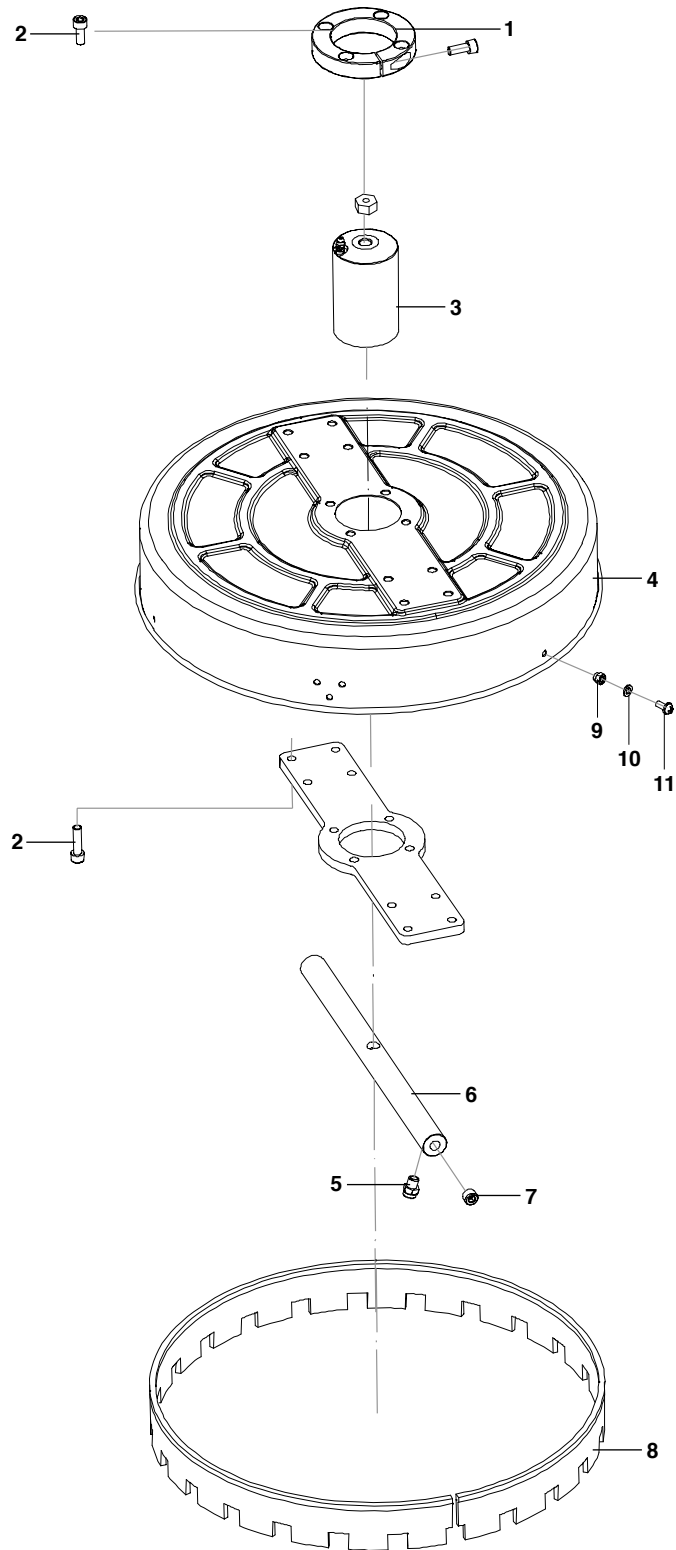


## PUMP ASSEMBLY PARTS LIST (SCW-4.0/40 GL)

ITEM	PART NO.	DESCRIPTION	QTY
1	8.918-818.0	Label, Karcher Ks4040g.3 Pump	1
2	9.804-016.0	Filter Screen Washer, Garden Hose/30mesh	1
3	▲ 9.378-010.0	Loctite 545	0.500
4	8.758-204.0	Hose Barb 3/8"X3/8" MI Pipe W/SInt	1
5	8.758-199.0	Hose Barb Elbow 3/8"X1/2" 90 Deg W/SInt	1
6	8.757-944.0	Tee Steel 3/8 Nptf (F)	1
7	8.757-549.0	Pump Protector 1/2 140	1
8	8.757-511.0	Elbow, 3/8", Steel	1
9	8.757-340.0	Elbow 3/8", Street 90 Deg, Steel, W/SInt	1
10	8.757-257.0	Tee, Street 1/2"	1
11	8.757-203.0	Swivel, 1/2" M-Nptf X 3/4" Ghf	1
12	8.757-193.0	Adapter, 1/2" F-Nptf X 1/2" M-Nptf, Brass	1
13	8.751-195.0	Pump, Karcher Ks4040g3, 4@4000 3400 Rpm	1
14	8.750-300.0	Unloader, Vrt3, 8gpm@4500psi W/Ez Start	1
15	8.711-785.0	Hose, 3/8" Push On, Per Ft	16"
16	8.707-152.0	Nipple, 3/8", Male, Ssteel	2
17	8.705-974.0	Nipple, 3/8" Hex Steel-P/N-C3069x6	1
18	8.623-315.0	Clamp, 3/8 Hose (D-Slot)	1
19	6.869-002.0	▲ Metal Bonding Agent	0.002

▲ Not Shown

# COVER ASSEMBLY

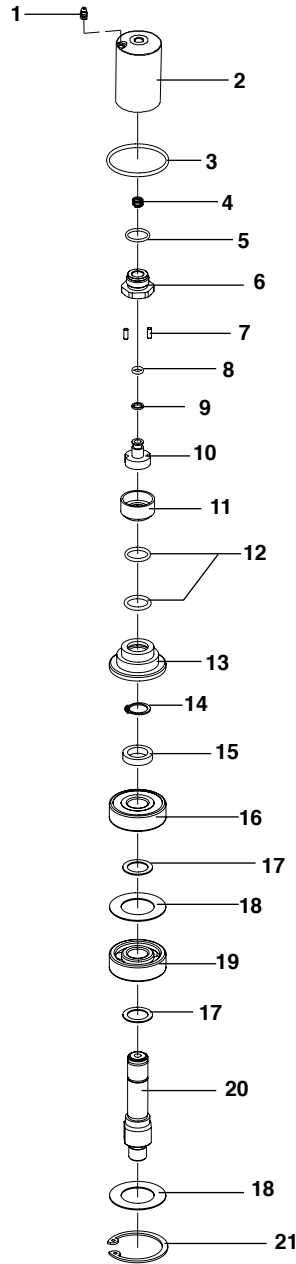


## COVER ASSEMBLY PARTS LIST

ITEM	PART NO.	DESCRIPTION	QTY
1	8.921-842.0	Kit, Swivel Clamp, A+SC21-SC24+SC28	1
		Clamp Ring	
		Bolt	
2		1/4" NPT Adaptor	1
3	8.753-597.0	Swivel Assembly, A+SC21	1
	8.759-672.0	Swivel Assembly SC28	1
4	8.753-598.0	Deck 21", A+SC21	1
	8.759-671.0	Deck 28", SC28	1
5	8.707-537.0	Nozzle, #2x25 1/8" MEG	2
	8.759-670.0	Nozzle #2.5 x 25 1/8" Meg SC28	1
6	8.921-847.0 8.759-673.0	Kit, Spray ARM, A+SC21	1
		Kit Spray Arm SC28	
		Spray Bar	
7		Spray Bar SC28	1
		End Plug	2
8	8.759-674.0	kit 28" Brush Assy SC28	1
	8.921-848.0	Kit, 21" Brush Assy, A+SC21	1
9		Brush Skirt	1
		BrushSkirt SC28	4
10		Nut M6	8
		Nut M6	4
11		Spacer	15
		Plai Washer D6	4
12		Screw M6 x 14	8
		Bolt M6 x 12	1
		Large Washer D6	

## SWIVEL ASSEMBLY EXPLODED

\* Kit, Swivel Seals, A+SC21  
8.921-833.0

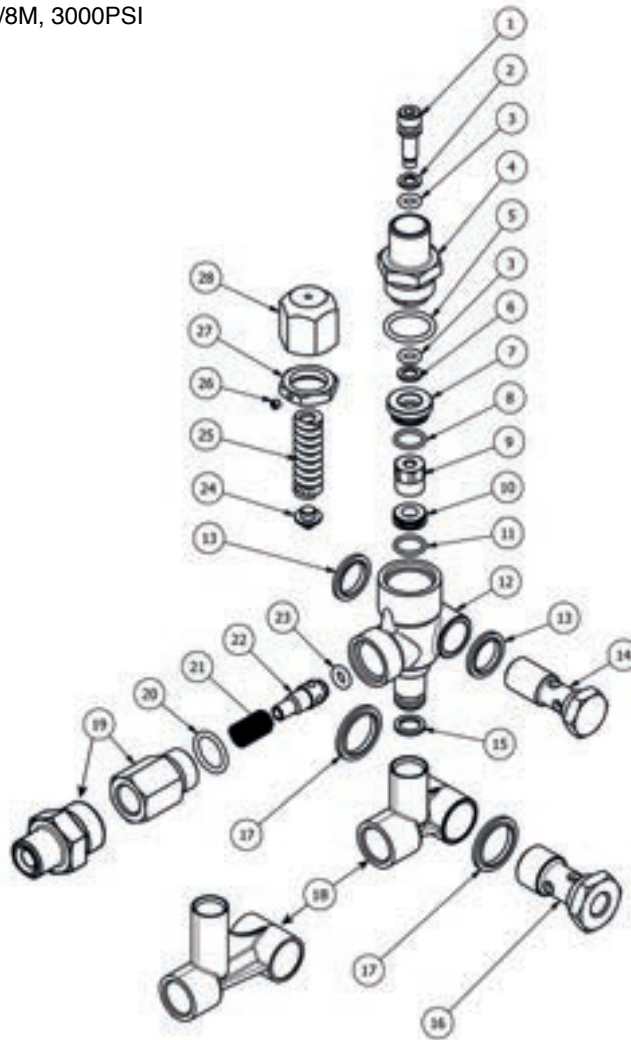


## SWIVEL ASSEMBLY PARTS LIST

ITEM	DESCRIPTION	QTY	ITEM	DESCRIPTION	QTY
1	Grease Nipple	1	12	O-Ring*	1
2	Swivel Housing	1	13	Bearing Retainer	1
3	O-Ring*	1	14	Snap Ring	1
4	Compression Spring	1	15	Bearing Back-up Ring	1
5	O-Ring	1	16	Upper Bearing	1
6	Bolt	1	17	Bearing Spacer	1
7	Pin	1	18	Washer	1
8	O-Ring*	1	19	Lower Bearing	1
9	Back up Ring*	1	20	Rotor Shaft	1
10	Stem	1	21	Snap Ring	1
11	Bearing Retainer, Small	1			

# VBT UNLOADER EXPLODED VIEW

Unloader, VBT Banjo 1/2M 3/8M, 3000PSI  
8.754-696.0

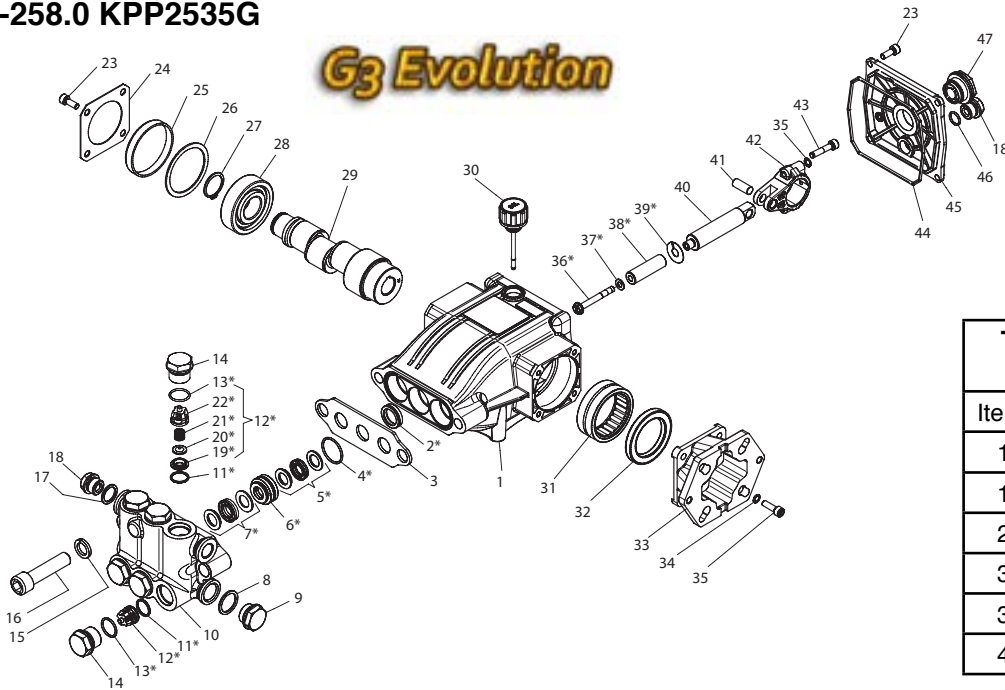


## UU1 UNLOADER EXPLODED VIEW PARTS LIST

ITEM	PART #	DESCRIPTION	KIT	QTY	ITEM	PART #	DESCRIPTION	KIT	QTY
1	8.754-929.0	Stem	C	1	18	8.754-937.0	Bypass Manifold		1
2	9.803-912.0	Backup Ring	A	1	19	9.802-892.0	Outlet Connector 3/8 MPT		1
3	8.754-930.0	O-ring, Ø2.62 x 6.02	A	2	20	9.803-191.0	O-ring, Ø2.62 X 17.13	A, B	1
4	8.730-882.0	Stem Connector		1	21	8.933-017.0	Poppet Spring	B	1
5	9.803-193.0	O-ring, Ø2.62 x 20.24	A	1	22	8.754-939.0	Poppet	B	1
6	9.803-908.0	Backup Ring	A	1	23	8.754-940.0	O-ring, Ø3 x 6	A, B	1
7	9.803-907.0	Guide Bushing		1	24	8.754-961.0	Plate	C	1
8	9.803-906.0	O-ring, Ø1.78 x 14	A	1	25	8.730-870.0	Spring 1500-3000 PSI	C	1
9	8.754-959.0	Ball SubAssembly	C	1	26	8.933-021.0	Set Screw		1
10	8.754-933.0	Seat	C	1	27	9.803-925.0	Nut		1
11	8.754-934.0	O-ring, Ø1.78 x 12.42	A,C	1	28	9.803-926.0	Knob, Brass, Unloader		1
12	8.754-935.0	Valve Body		1	<b>Kit A</b>	8.754-941.0	O-Ring Repair Kit		
13	9.802-893.0	Seal Washer 3/8		1	<b>Kit B</b>	8.754-942.0	Outlet Repair Kit		
14	9.803-919.0	Banjo Bolt 3/8		1	<b>Kit C</b>	8.754-957.0	Stem Repair Kit		
15	8.754-936.0	O-ring, Ø2.62 x 10.78	A	1					
16	9.803-920.0	Banjo Bolt, 1/2, w/1/4" Port		1					
17	9.803-914.0	Seal Washer 1/2		1					

# KPP2535 PUMP EXPLODED VIEW

8.929-258.0 KPP2535G



TORQUE SPECS	
Item #	Ft.-lbs
14	66
16	66
23	8
35	8
36	9.5
45	12.5

## LPP2535G PUMP PARTS LIST

ITEM	PART NO.	DESCRIPTION	QTY	ITEM	PART NO.	DESCRIPTION	QTY
1	8.754-841.0	Crankcase	1	28	9.803-955.0	Ball Bearing	1
2*	See Kits Below	Plunger Oil Seal	3	29	8.754-831.0	Hollow Shaft 2535G	1
3	8.758-216.0	Spacer	1		8.754-834.0	Hollow Shaft 3035G	1
4*	See Kits Below	"O" Ring Ø1.78X26.7	3	30	8.754-219.0	Oil Dip Stick	1
5*	See Kits Below	"U" Seal, DIA. 14 MM	3	31	8.754-840.0	Needle Roller Bearing	1
6*	See Kits Below	Pressure Ring Dia. 14 mm	3	32	8.754-826.0	Crankshaft Seal	1
7*	See Kits Below	"U" Seal, Dia. 14 mm	3	33	8.754-863.0	Motor Flange	1
8	9.803-199.0	Copper Washer g1/2	1	34	9.803-218.0	Spring Washer Dia. 6 mm	10
9	9.802-926.0	Brass Plug g1/2	1	35	8.752-824.0	Screw m6x20	4
10	8.759-027.0	Manifold Housing	1	36*	8.754-855.0	Plunger bolt	3
11*	8.717-233.0	"O" Ring ø1.78x15.6	6	37*	8.754-092.0	Bonded Seal - ø6,7x11x1 AISI 304	3
12*	See Kits Below	Valve Assembly	6	38*	8.754-849.0	Plunger Dia. 14 mm	3
13*	9.803-948.0	"O" Ring ø1,78x18.77	6	39*	9.803-962.0	Copper Spacer	3
14	9.803-949.0	Valve Plug	6	40	8.759-032.0	Plunger Rod	3
15	8.754-850.0	Lock-Washer	2	41	9.803-965.0	Connecting Rod Pin	3
16	8.758-217.0	Manifold Stud Bolt M14X60	2	42	9.803-966.0	Connecting Rod	3
17	9.803-198.0	Copper Washer g3/8	1	43	8.933-020.0	Connecting Rod Screw	6
18	8.707-262.0	Brass Plug g 3/8	2	44	8.754-847.0	"O" Ring ø2.62X111.62	1
19*	See Kits Below	Valve Seat	6	45	8.754-842.0	Crankcase Cover	1
20*	See Kits Below	Valve Seat	6	46	9.803-906.0	"O" Ring ø1.78X14	1
21*	See Kits Below	Valve Plate	6	47	9.803-202.0	Sight Glass G3/4	1
22*	See Kits Below	Valve Spring	6				
23	9.802-939.0	Screw M6X16	8				
24	8.717-137.0	Bearing Cover	2				
25	9.803-954.0	Bearing Seal	1				
26	8.754-843.0	Crankshaft Seal Spacer	1				
27	9.802-914.0	Snap Ring Dia. 25 mm	1				

\* Available in kit (See below)

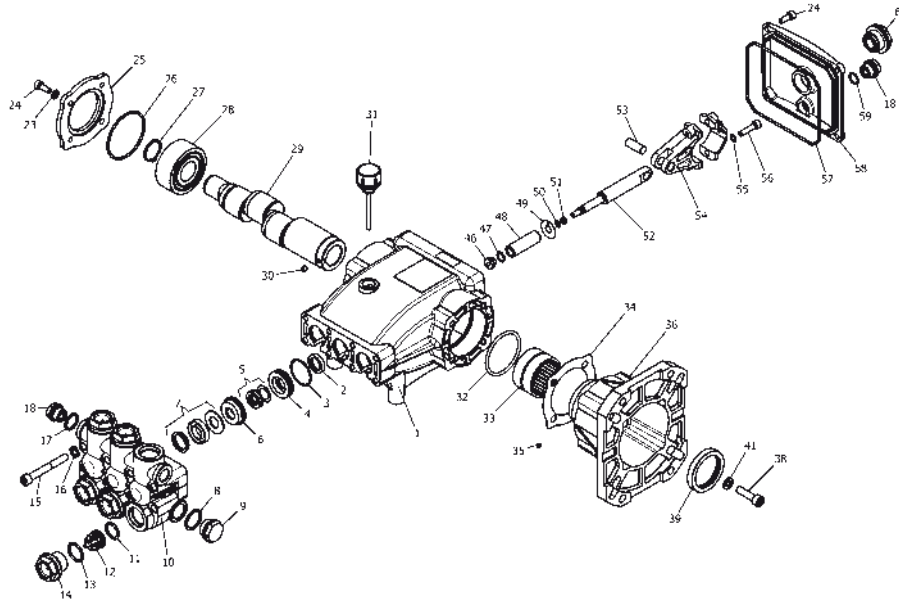


## KPP2535G PUMP

REPAIR KIT NUMBER	8.759-031.0	8.758-218.0	8.754-862.0	8.754-859.0	9.803-937.0
KIT DESCRIPTION	Plunger Seals 16 mm	Seal Packing 16 mm	Plunger 16 mm	Complete Valve	Plunger Oil Seals
ITEM NUMBERS INCLUDED	4, 6,7,16	4, 5, 6, 7, 16	36, 37, 38, 39	11, 12, 14	2
NUMBER OF CYLINDERS KIT WILL SERVICE	3	3	1	6	3

# LS 4040G PUMP EXPLODED VIEW

8.750-753.0 LS4040G



TORQUE SPECS	
Item #	Ft.-lbs
14	75
15	30
24	7.6
38	10
46	7
56	13

## LS 4040G PUMP PARTS LIST

ITEM	PART NO.	DESCRIPTION	QTY	ITEM	PART NO.	DESCRIPTION	QTY
1	8.751-217.0	Crankcase	1	33	9.803-161.0	Needle Roller Bearing	1
2	See Kit Below	Plunger Oil Seal	3	34	8.751-230.0	Gasket	1
3	See Kit Below	O-Ring 1.78 x 31.47	3	35	8.717-544.0	Screw, Set	1
4	See Kit Below	Pressure Ring	3	36	9.803-183.0	Engine Flange	1
5	See Kit Below	U-Seal, 15mm	3	38	9.803-240.0	Flange Screw	4
6	See Kit Below	Intermed, Ring 15mm	3	39	9.803-142.0	Crankshaft Seal	1
7	See Kit Below	U-seal, 15mm	3	41	9.803-221.0	Sprong Washer	4
8	9.803-199.0	Copper Washer 1/2"	1	46	See Below	Plunger Nut, M6	3
9	9.802-926.0	Brass Plug, 1/2"	1	47	See Below	Washer, coper, 9.2 x 13.5	3
10	8.751-218.0	Manifold Housing	1	48	See Below	Plunger, 15mm	3
11	9.803-191.0	O-Ring 2.62 x 17.13	1	49	See Below	Copper Spacer	3
12	See Kit Below	Valve Assembly	6	50	See Below	O-Ring 0.78 X 5.28	3
13	9.803-193.0	O-Ring 2.62 x 20.29	6	51	See Below	Teflon Ring	3
14	9.802-928.0	Valve Plug	6	52	8.751-225.0	Plunger Rod	3
15	9.802-938.0	Manifold Stud Bolt	8	53	8.751-228.0	Connecting Rod Pin	3
16	9.802-884.0	Washer	8	54	9.803-158.0	Connecting Rod	3
17	9.803-198.0	Copper Washer 3/8"	1	55	5.803-218.0	Spring Washer	6
18	9.802-925.0	Brass Plug 3/8"	2	56	9.803-238.0	Connecting Rod Screw	6
23	9.803-210.0	Washer, M6 x 16	4	57	8.933-016.0	O-Ring 2.62 x 126.67	1
24	9.802-939.0	Hexagonal Screw	9	58	8.751-229.0	Crankcase Cover	1
25	9.803-184.0	Closed Bearing Housing	1	59	9.803-197.0	O-Ring, 1.78 X 14	1
26	8.717-225.0	O-Ring 2.62 x 61.6	1	60	9.803-202.0	Sight Glass, G 3/4	1
27	9.802-914.0	Snap Ring	1				
28	9.803-168.0	Double Row Ball Bearing	1				
29	9.803-152.0	Crankshaft	1				
30	9.802-945.0	Set Screw	1				
31	9.802-921.0	Oil Dip Stick	1				
32	9.804-581.0	O-Ring 3.53 x 55.56	1				

\* Part available in Kit

## LS 4040G PUMP

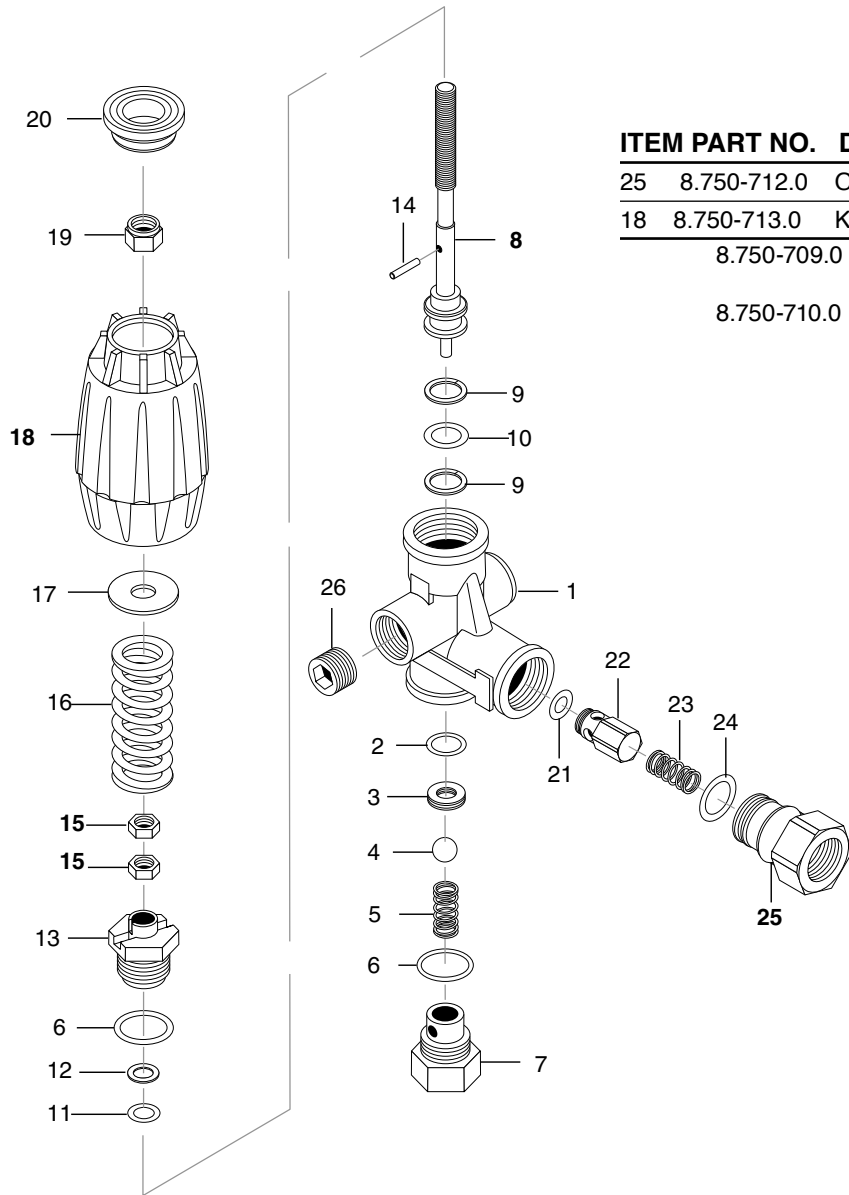
REPAIR KIT NUMBER	8.725-358.0	8.725-359.0	8.933-023.0	9.802-603.0	9.802-609.0
KIT DESCRIPTION	Plunger U-Seal 15 mm	Complete U-Seal Packing 15 mm	Plunger 15 mm	Complete Valve	Plunger Oil Seals
ITEM NUMBERS INCLUDED	3, 5, 7	3, 4, 5, 6, 7	46, 47, 48, 49, 50, 51	11, 12, 13	2
NUMBER OF CYLINDERS KIT WILL SERVICE	3	1	1	6	3

# VRT3 UNLOADER EXPLODED VIEW AND PARTS LIST

8.750-297.0, 8 GPM, 2320 PSI

8.750-298.0, 8 GPM, 3630 PSI

8.750-299.0, 8 GPM, 4500 PSI



ITEM	PART NO.	DESCRIPTION	QTY
25	8.750-712.0	Outlet Fitting	1
18	8.750-713.0	Knob, Unloader	1
	8.750-709.0	Repair Kit, VRT3, 2320/3630 PSI	
	8.750-710.0	Repair Kit, VRT3, 4500 PSI (Kit Items: 1, 4, 8-12, 16, 21-22)	

### Unloader Adjustment Procedures

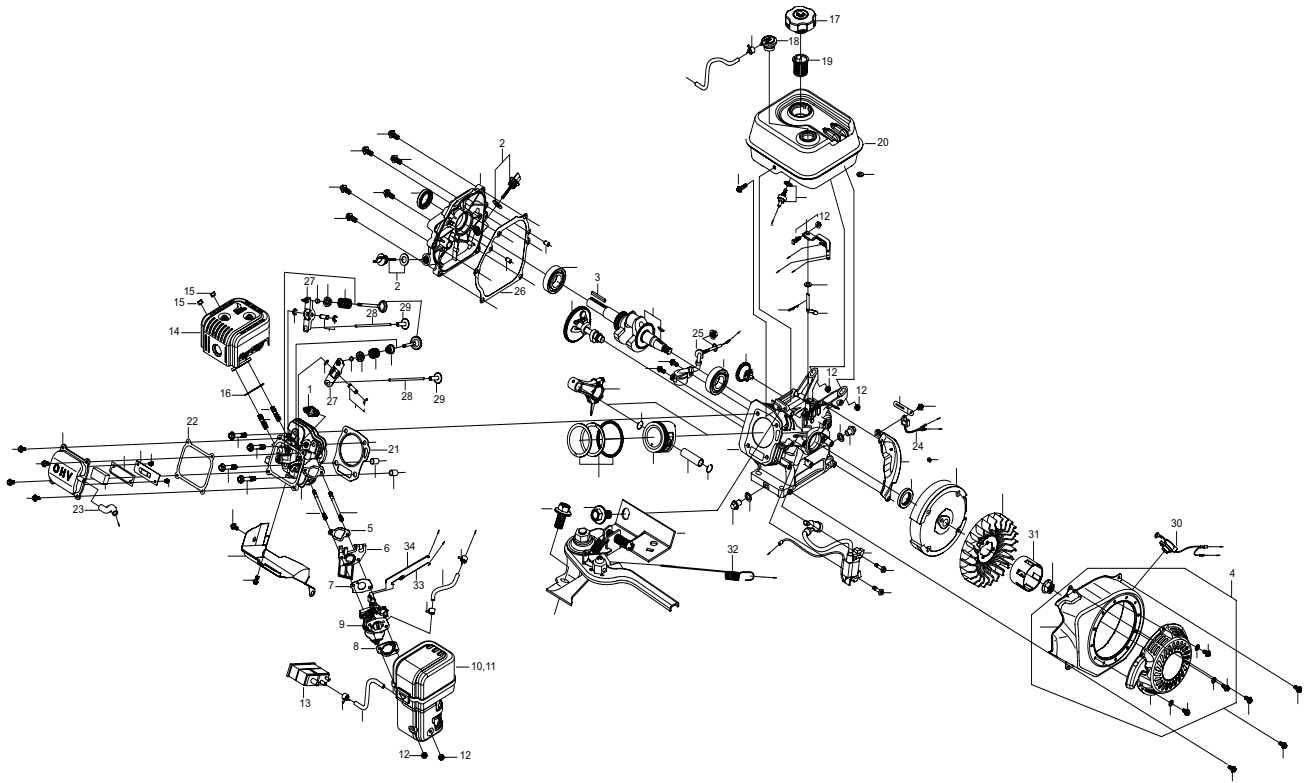
1. Remove lock nut (Item 19).
2. Remove adjustment knob (Item 18).
3. Loosen the two (2) nuts (Item 15), move them upward on stem (Item 8) until you see 4 or more threads below the nut.
4. Re-attach adjusting knob (Item 18).
5. Start machine. Open the trigger of the spray gun. Increase pressure by turning adjustment knob (Item 18) clockwise until pressure is at the desired operating pressure.
6. Remove the adjustment knob (Item 18), tighten the lower nut (Item 15) tightly against the upper nut (Item 15). Reattach adjustment knob (Item 18) and screw down until contact is made with the nuts (Items 15). Screw down lock nut (Item 19) onto the stem (Item 8) until the threads cut into the nylon insert of the lock nut (Item 19).

\*If adjustment knob (Item 18) DOES NOT make contact with upper nut (Items 15), remove adjusting knob (Item 18), re-adjust (raise) nuts (Items 15) on stem (Item 8) and re-attach adjustment knob (Item 18), then repeat step #6.

\*\*If adjustment knob (Item 18) DOES make contact with upper nut; release the trigger of the spray gun and watch the pressure gauge for the pressure increase ("spike"). This "spike" SHOULD NOT exceed 500 psi above the operating pressure. If "spike" pressure exceeds the 500 psi limit, remove the adjusting knob (Item 18) and re-adjust (lower) the nuts (Items 15) on the stem (Item 8).

Re-attach the adjusting knob (Item 18), then repeat step #6.

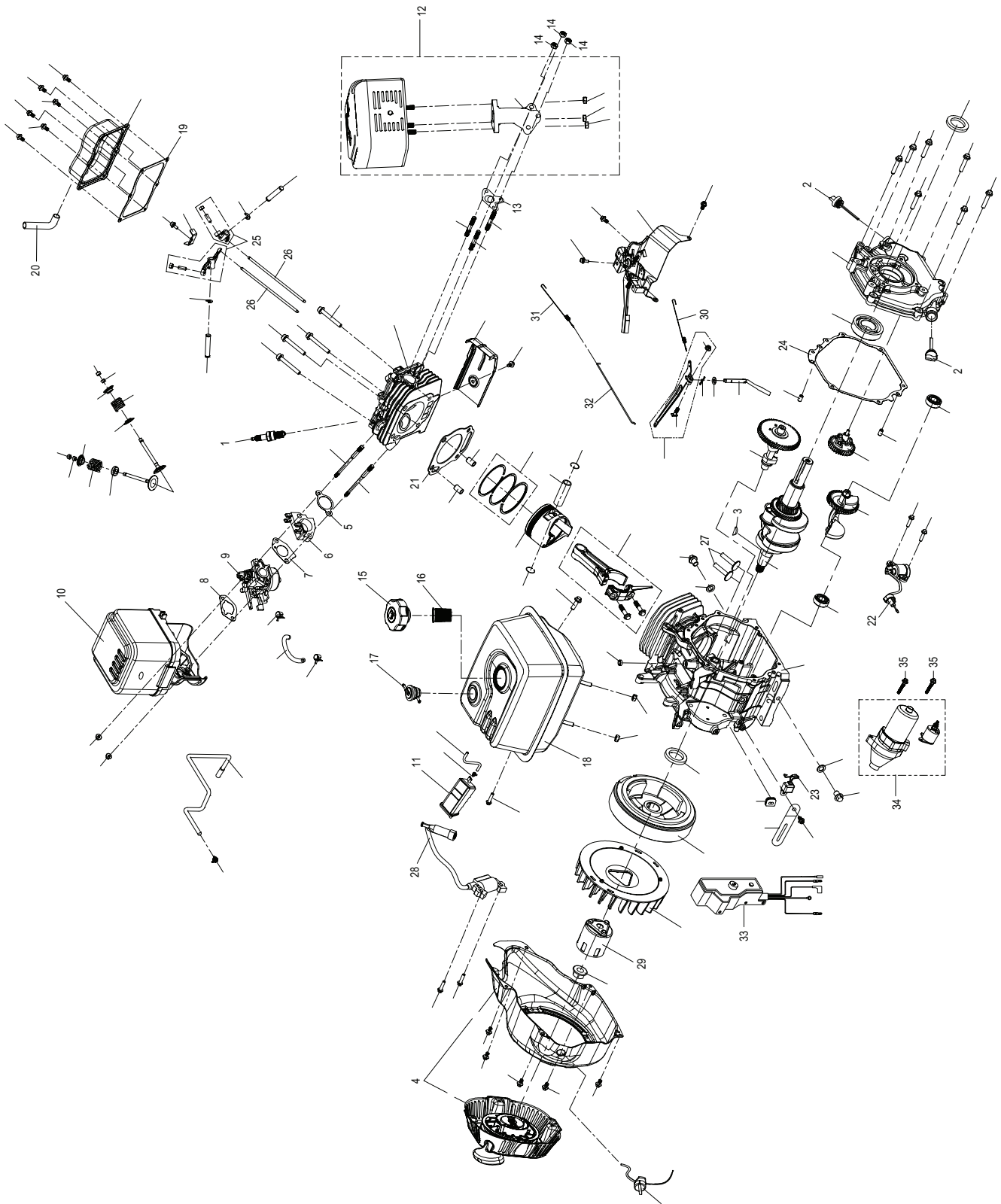
# ENGINE BLACK LONCIN G210FA EXPLODED VIEW



## ENGINE BLACK LONCIN G210FA PARTS LIST

ITEM	PART NO.	DESCRIPTION	QTY	ITEM	PART NO.	DESCRIPTION	QTY
1	8.765-787.0	Spark Plug Loncin	1	21	8.753-618.0	Gasket, Cylinder, G200FA	1
	28.751-026.0	Cap, Assembly	2	22	8.753-619.0	Packing, Head Cover, G200FA	1
3	9.802-958.0	Key, 0.185 SQR X 1.75'	1	23	8.753-621.0	Tube, Breather, G200FA	1
4	8.753-623.0	Recoil Starter Comp. G200fa	1	24	8.765-794.0	Oil Protection Sensor Loncin	1
5	8.765-789.0	Insulating Flat Gasket G210	1	25	8.765-795.0	Oil Level Sensor G210	1
6	8.753-626.0	Insulator, Carburetor, G200FA	1	26	8.753-622.0	Packing, Case Cover, G200FA	1
7	8.765-790.0	Carburetor gasket G210	1	27	8.765-796.0	Rocker Valves G210	2
8	8.753-627.0	Spacer Comp., Air Cleaner, G200FA	1	28	8.765-797.0	Pusher Rod Arm G210	2
9	8.753-625.0	Carburetor, G200FA	1	29	8.765-798.0	Lifter Valve G210	2
10	8.753-638.0	Air Cleaner Assy, G200FA	1	30	8.753-624.0	Switch Assy., Engine Stop, G200FA	1
11	8.753-639.0	Element Assy, Air Cleaner, G200FA	1	31	8.753-630.0	Pulley, Starter, G200FA	1
12	8.765-778.0	Flanged Hexagon Nut	2	32	8.765-799.0	Governor Spring G210	1
13	8.753-651.0	Carbon Cannister Assy, G200FA	1	33	8.765-800.0	Throttle Return Spring G210	1
14	8.753-640.0	Muffler Assy, G200FA	1	34	8.765-801.0	Throttle Screw G210	1
15	8.765-792.0	Exhaust Muffler Nut	2				
16	8.753-641.0	Gasket, Muffler, G200FA	1				
17	8.753-642.0	Cap Comp., Fuel Filler, G200FA	1				
18	8.753-643.0	Gas Valve, Fuel Tank, G200FA	1				
19	8.765-793.0	Tank Filter Loncin	1				
20	8.753-648.0	Tank Comp., Fuel, G200FA	1				

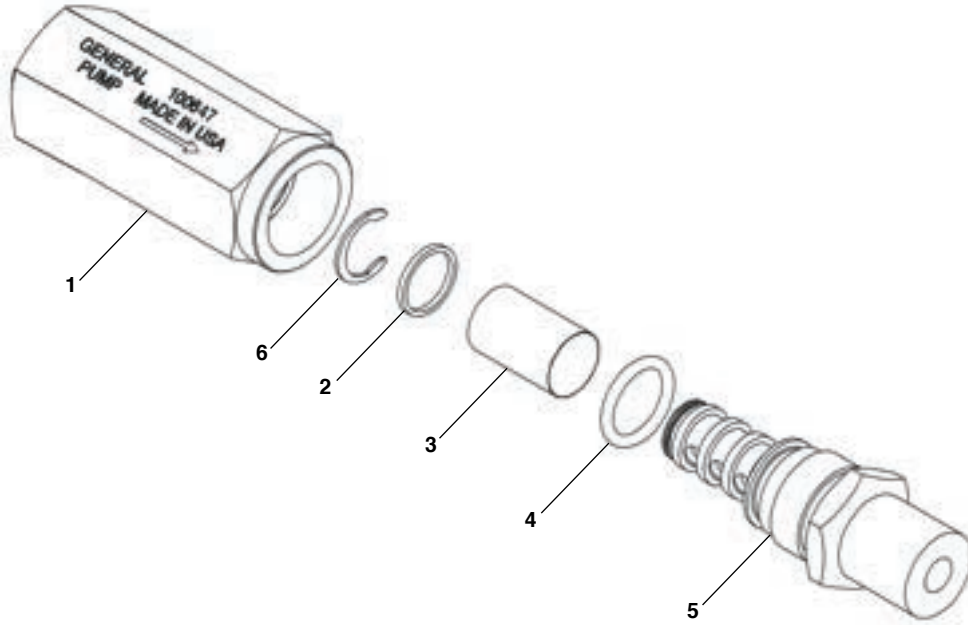
# ENGINE BLACK LONCIN G420 EXPLODED VIEW



## ENGINE BLACK LONCIN G420 PARTS LIST

ITEM	PART NO.	DESCRIPTION	QTY
1	8.765-787.0	Spark Plug Loncin	1
2	8.765-803.0	Oil Ruler G420	2
3	8.765-804.0	Shaft Key G420	1
4	8.765-779.0	Manual Starter G420FA	1
	8.765-824.0	Manual Starter G420FDA	1
5	8.765-805.0	Insulating Flat Gasket G420	1
6	8.765-806.0	Heat Protection Pad G420	1
7	8.765-807.0	Carburetor Inlet Flat Gasket G420	1
8	8.765-808.0	Carburetor Outlet Flat Gasket G420	1
9	8.765-780.0	Carburetor G420	1
10	8.765-781.0	Air Filter G420	1
11	8.765-809.0	Carbon Filter G420	1
12	8.765-782.0	Exhaust Muffler G420	1
13	8.765-810.0	Exhaust Muffler Gasket G420	1
14	8.765-792.0	Exhaust Muffler Nut	3
15	8.753-642.0	Cap Comp., Fuel Filler, G200FA	1
16	8.765-793.0	Tank Filter Loncin	1
17	8.753-653.0	Loop, Tube, G200FA	1
18	8.765-783.0	Fuel Tank G420	1
19	8.765-812.0	Cylinder Head Cover Flat Gasket G420	1
20	8.765-813.0	Cylinder Breather Tube G420	1
21	8.765-814.0	Cylinder Head Flat Gasket G420	1
22	8.765-815.0	Oil Level Sensor G420	1
23	8.765-794.0	Oil Protection Sensor Loncin	1
24	8.765-816.0	Crankcase Flat Gasket G420	1
25	8.765-817.0	Rocker Valves G420	1
26	8.765-818.0	Pusher Rod Arm G420	2
27	8.765-827.0	Lifter Valve G420	2
28	8.765-819.0	Coil Starter Set	1
29	8.765-820.0	Starter Disc G420	1
30	8.765-821.0	Governor Spring G420	1
31	8.765-822.0	Throttle Return Spring G420	1
32	8.765-823.0	Throttle Rod Arm	1
33	8.765-784.0	Control Box G420 (Only G420FDA)	1
34	8.765-825.0	Throttle handle Set (Only G420FDA)	1
35	8.765-826.0	Hexagon Bolt (Only G420FDA)	2

## FILTER EXPLODED VIEW

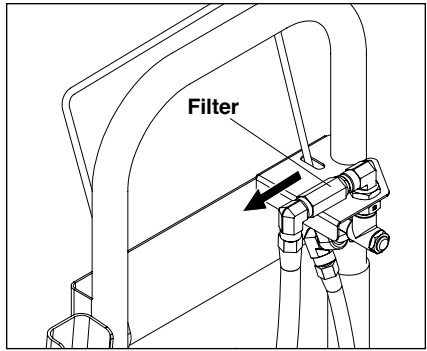


## FILTER PARTS LIST

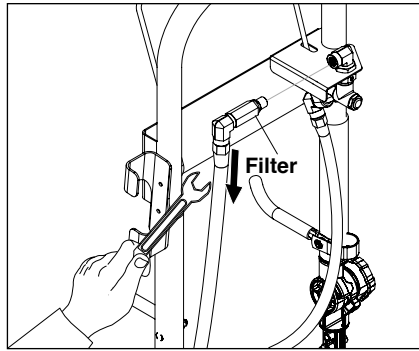
ITEM	DESCRIPTION	QTY
1	Housing, Nozzle Filter, 1/4 NPT-F	1
2	Retainer, Filter	1
3	Screen, 100 Mesh, T304SS	1
4	O-Ring, 70 Duro, Buna-N, .426 ID x .070 CS	1
5	Outlet Fitting, Nozzle Filter, 1/4 NTP-M	1
6	Retainer, External, SS	1



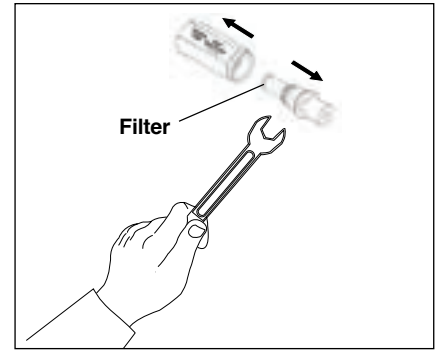
# CLEANING THE WATER INLET FILTER



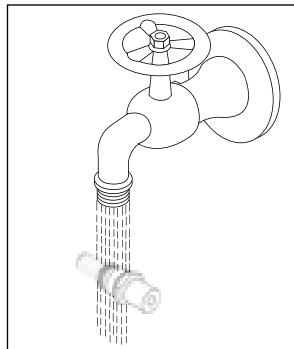
**STEP 1:** Disconnect the filter from the machine.



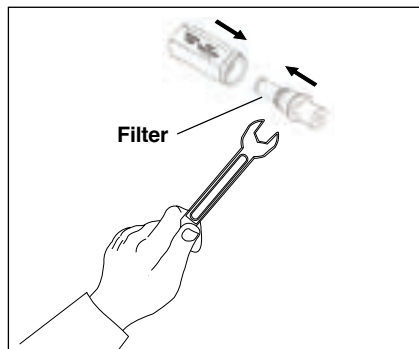
**STEP 2:** Use the necessary tool to disconnect the hose from elbow.



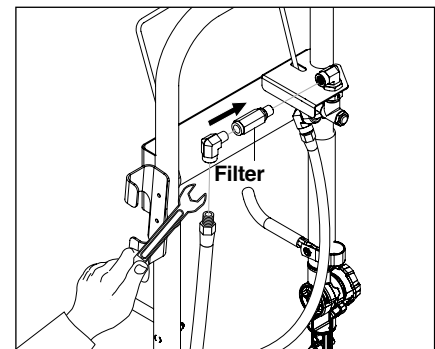
**STEP 3:** Pull out water inlet filter. Use the necessary tools.



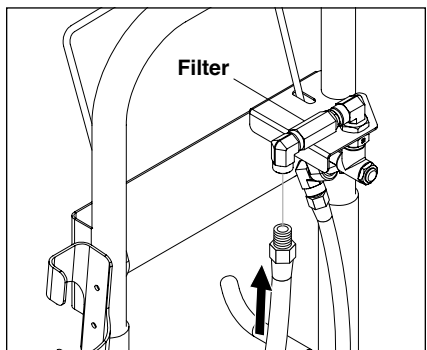
**STEP 4:** Rinse out water inlet filter in warm water.



**STEP 5:** Assemble the water inlet filter. Use the necessary tools.



**STEP 6:** Connect the filter with the TEE fitting.



**STEP 7:** Connect the hose with the elbow.

## TROUBLESHOOTING

PROBLEM	POSSIBLE CAUSE	SOLUTION
<b>INADEQUATE CLEANING POWER</b>	Not enough PSI from pressure washer	Ensure unit produces a minimum 2000 PSI.
	Inadequate water supply	Turn water supply completely "ON" and/or clean water filter on pressure washer. Ensure unit produces a minimum of 2.4 GPM.
	Engine RPM on pressure washer is too low	Increase throttle.
	Nozzle obstructed or worn	Clean or replace as necessary.
	Incorrect nozzle orifice size	Insert correct nozzle.
<b>ROTATING BAR WILL NOT ROTATE</b>	Seal has drag	Allow for break-in period.
	Snap ring dislodged	Do not use! Contact your customer service.
	Seal malfunction	Do not use! Contact your customer service.
	Bearing failure	Do not use! Contact your customer service.
<b>EXCESSIVE VIBRATION OF SURFACE CLEANER OR CLEANER BASE IS CREATING A SUCTION TO THE SURFACE</b>	Nozzle clogged	Clean or replace.
	Rotating bar, bolts or fittings loose	Tighten.
	Rotating bar or swivel rotor bent	Replace.
<b>STREAKED CLEANING PATTERN</b>	Insufficient water supply OR PSI of pressure washer is too low. (Won't allow Rotatin Bar to move.)	Increase water supply or ensure pressure is a minimum of 2000 PSI and GPM is a minimum of 2.4
	Nozzle clogged	Clean or replace.
	Cleaning too fast	Slow down pace.
<b>WATER WEEPING FROM SWIVEL</b>	Small amount of seepage is normal	No modification is necessary.
<b>WATER SHOOTING FROM SWIVEL</b>	Seal malfunction	Replace.
<b>LOW OPERATING PRESSURE</b>	Insufficient water supply. Closed faucet. Inlet hose kinked	Use larger garden hose; clean inlet water screen. Open faucet.
	Clogged inlet hose strainer	Check plumbing system for leaks. Retape leaks with teflon tape.
	Faulty or mis-adjusted unloader valve	Adjust unloader for proper pressure. Install repair kit when needed. Call local distributor.
	Worn packing in pump	Call Dealer Customer Support.
	Machine has been stored in freezing temperatures	Thaw out machine completely, including hose, spray gun and wand.
	Slow engine RPM	Call local distributor.

## TROUBLESHOOTING

PROBLEM	POSSIBLE CAUSE	SOLUTION
<b>FLUCTUATING PRESSURE</b>	Worn or dirty pump valves	Call local distributor.
	Nozzle is obstructed	Blow out or remove debris with fine needle.
	Pump sucking air, inlet hose leaking	Check that all hoses and fittings are airtight. Turn off machine and trigger spray gun until a steady flow of water emerges through the nozzle.
	Insufficient water supply	Turn water on full force. Check garden hose for kinks, leaks or blockage.
<b>PRESSURE LOW AFTER PERIOD OF NORMAL USE</b>	Nozzle worn	Replace nozzle.
	Unloader valve worn	Replace unloader valve.
<b>ENGINE WILL NOT START OR STOPS WHILE OPERATING</b>	Low oil shutdown	Fill engine with oil.
	Out of gas	Fill fuel tank.
	Water in gasoline	Drain gas tank; fill with clean fuel.
<b>ENGINE IS OVERLOADED</b>	Nozzle partially blocked	Clean nozzle.
	Excessive pressure from high engine RPM	Adjust engine throttle to lower RPM.
<b>WATER OR OIL LEAKING FROM BOTTOM OF PUMP</b>	A small amount of leaking is normal	If excessive leaking occurs, call local distributor.
<b>PRESENCE OF WATER IN PUMP OIL</b>	Water sprayed at machine	Change oil. Direct spray away from machine.
	High humidity in air	Check and change oil twice as often.
	Piston packing worn. Oil seal worn.	Call local distributor.
<b>ENGINE OPERATES FOR 15 MINUTES THEN STOPS</b>	Not enough gas or engine oil	Fill tank with gas. Check oil level.
	Vapor lock developed by heat of day	Keep gas tank full to avoid vapor locking.
	Obstruction in fuel filter	Clean or replace fuel filter.
<b>ENGINE LACKS POWER</b>	Dirty air filter	Replace air filter.
<b>ENGINE FALTERS</b>	Choke is opened too soon	Move choke to halfway position until engine runs smoothly.
<b>WATER DRIPPING FROM UNDER PUMP</b>	Piston packing worn	Call local distributor.
	O-Ring plunger retainer worn	Call local distributor.
	Cracked piston	Call local distributor.
<b>OIL DRIPPING FROM UNDER PUMP</b>	Oil seal worn or damaged	Call local distributor.
<b>WATER LEAKING FROM PUMP PROTECTOR</b>	Spray gun closed with machine running 5 minutes or longer	Open spray gun or turn off machine.
	Excess water supply pressure	Place a pressure regulator at end of 50' garden hose.

## TROUBLESHOOTING

PROBLEM	POSSIBLE CAUSE	SOLUTION
<b>GARDEN HOSE CONNECTION LEAKS</b>	Loose fittings	Tighten fittings.
	Missing/worn rubber washer	Insert new washer.
<b>SPRAY WAND LEAKS</b>	Spray wand not properly attached	Slide the spray wand into the gun. Turn the wand collar clockwise onto the spray gun threads until tight.
	Broken o-ring	Call local distributor and order an o-ring.
<b>PUMP IS NOISY</b>	Pump is sucking air	Check that hoses and fittings are air tight. Turn off machine and purge pump by squeezing trigger gun until a steady flow of water emerges through nozzle.
<b>QUICK COUPLER LEAKS</b>	Worn O-Ring	Replace O-Ring (Part #2-0121).
<b>SPRAY GUN(S) LEAK</b>	Foreign matter between valve seat and ball	Remove foreign matter. Replace with Repair Kit (Part #81-21227).
<b>PRESSURE WASHER UNLOADER CYCLES</b>	High pressure filter or wrong sized nozzles for attached pressure washer	Remove and clean out filter, nozzle(s). Check nozzle size.
<b>NOZZLES SPINNING TOO SLOW</b>	Not enough water volume for attached pressure washer to rotate nozzles	Need a larger gpm pressure washer.
<b>ROTATING NOZZLE ARM NOT SPINNING, BEARING NOISE</b>	Bearing low on grease	Grease bearing.

# TROUBLESHOOTING

## NOZZLE CHART

Correct nozzle size is important for optimum cleaning efficiency. Surface Cleaner Unit is shipped with two #2, 25° nozzle in rotary swivel, and one #3, 15° nozzle in shut-off gun. Review correct nozzle size for your pressure washer. See chart below for correct nozzle size. To obtain the correct nozzle size in the rotary swivel, divide the minimum nozzle size by the pressure by two. Round this figure up to the nearest half nozzle size. These are the 1/8" nozzles only (two needed for the rotary swivel on the Surface Cleaner Unit).

Nozzle Size	Orifice diam. (in.)	40 PSI	100 PSI	250 PSI	500 PSI	600 PSI	700 PSI	800 PSI	1000 PSI	1200 PSI	1500 PSI	2000 PSI	2500 PSI	3000 PSI	3500 PSI	4000 PSI
2	.034	.20	.32	.50	.71	.77	.80	.89	1.0	1.1	1.2	1.4	1.6	1.7	1.9	2.0
3	.042	.30	.47	.75	1.07	1.16	1.25	1.34	1.5	1.6	1.8	2.1	2.4	2.6	2.8	3.0
4	.052	.40	.63	1.00	1.40	1.60	1.70	1.80	2.0	2.2	2.5	2.8	3.1	3.5	3.8	4.0
4.5	.055	.45	.71	1.10	1.50	1.70	1.90	2.00	2.2	2.4	2.8	3.0	3.6	3.9	4.3	5.0
5	.057	.50	.79	1.30	1.80	1.90	2.10	2.20	2.5	2.8	3.1	3.6	4.0	4.4	4.7	5.0
5.5	.06	.55	.87	1.40	1.90	2.10	2.30	2.50	2.8	3.0	3.4	3.8	4.4	4.8	5.2	5.0
6	.062	.60	.95	1.50	2.10	2.30	2.50	2.70	3.0	3.2	3.7	4.2	4.8	5.2	5.7	6.0
6.5	.064	.65	1.00	1.70	2.30	2.50	2.70	2.90	3.3	3.6	4.0	4.6	5.2	5.7	6.0	
7	.067	.70	1.10	1.80	2.50	2.70	2.90	3.10	3.5	3.8	4.3	5.0	5.6			
7.5	.07	.75	1.20	1.90	2.70	2.90	3.20	3.40	3.8	4.1	4.6	5.3	6.0			
8	.072	.80	1.30	2.00	2.80	3.10	3.40	3.60	4.0	4.4	5.0	5.6				
8.5	.074	.85	1.30	2.20	3.00	3.30	3.60	3.80	4.3	4.6	5.3	6.0				
9	.076	.90	1.40	2.30	3.20	3.50	3.80	4.00	4.5	5.0	5.5					
9.5	.078	.95	1.50	2.40	3.40	3.70	4.00	4.30	4.8	5.3	5.8					
10	.08	1.00	1.60	2.50	3.50	3.90	4.20	4.50	5.0	5.4						
12	.087	1.20	1.90	3.00	4.20	4.60	5.00	5.40	6.0							
15	.094	1.50	2.40	3.80	5.30	5.80										
20	.109	2.00	3.20	5.00												
30	.141	3.00	4.70													
40	.156	4.00														

## PREVENTATIVE MAINTENANCE

This pressure washer was produced with the best available materials and quality craftsmanship. However, you as the owner have certain responsibilities for the correct care of the equipment. Attention to regular preventative maintenance procedures will assist in preserving the performance of your equipment. Contact your dealer for maintenance. Regular preventative maintenance will add many hours to the life of your pressure washer. Perform maintenance more often under severe conditions. Check pump oil and engine oil level before first use of your new pressure washer.

MAINTENANCE SCHEDULE		
Engine Oil SAE 10W-30 (GX200 engine: 0.63 US qt)	Inspect	Daily
	Change	First month or 20 hours. Every 100 hours or every 6 months after first month
	Filter	Every 50 hours
Air Cleaner/Filter	Inspect	Every 50 hours
	Clean	Monthly
Engine Fuel Filter		500 hours or 6 months
Spark Plug Maintenance		300 hours or annually
Clean Fuel Tank(s)		Annually
Replace Fuel Lines		Annually
Pump Oil (Non Foaming) SAE 10W-40 Oil capacity: 13.5 Oz	Inspect	Oil level daily
	Change	After first 50 hours, then every 500 hours or annually
Replace High Pressure Nozzle		Every 6 months
Replace Quick Connects/O-Rings		Annually/As needed
Clean Water Screen/Filter		Weekly
Replace HP Hose		Annually (if there are any signs of wear)
Water Filter		Every 50 hours

**NOTE: Read engine manual for any maintenance or service questions.**

## OIL CHANGE RECORD

Check pump oil and engine oil level before first use of your new pressure washer.

Pump oil: Check level daily before first use of your new Surface Cleaner, Change pump oil after first 50 hours and every year or 500 hours thereafter. Use SAE 10W-40 Non Foaming. Oil capacity in pump is 13.5 Oz.

Engine oil: Check daily before first use of you new Surface Cleaner. Changes pump oil after first 20 hours and every 100 hours thereafter. GX200 engine requires 0.63 US qt. of SAE 10W-30 oil.

Date Oil Changed Month/Day/Year	Estimated Operating Hours Since Last Oil Change

Date Oil Changed Month/Day/Year	Estimated Operating Hours Since Last Oil Change



# THANK YOU!

## MERCI! ¡GRACIAS! DANKE!



Register your product and benefit from many advantages.

Enregistrez votre produit et bénéficiez de nombreux avantages.

Registre su producto y aproveche de muchas ventajas.

Registrieren Sie Ihr Produkt und Sie von vielen Vorteilen.

[www.kaercher.com/welcome](http://www.kaercher.com/welcome)

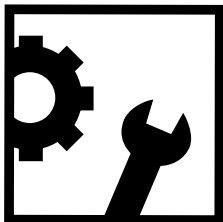


Rate your product and tell us your opinion.

Évaluez votre produit et donnez-nous votre opinion.

Reseña su producto y díganos su opinión.

Bewerten Sie Ihr Produkt und sagen Sie uns Ihre Meinung.



[www.kaercher.com/dealersearch](http://www.kaercher.com/dealersearch)

**Kärcher North America**  
6398 N Kärcher Way  
Aurora, CO 80019  
Phone: +1 800 444-7654

